

Cavendish Hardware

**Smith
Wallis**

Parts for Steel & Aluminium Windows



HARDWARE

For Steel & Aluminium Windows and Doors

Tel: 0116 2742195 Fax: 0116 2461545
sales@cavendish-hardware.co.uk

Introduction

For almost ninety years, the name Smith Wallis has been synonymous with quality fittings for steel windows and doors.

Established in Birmingham in the 1920's, it's original designs have proved timeless, and are used throughout the English speaking world.

In the early 1980's the company was acquired by the Cartwright Group who were in turn purchased by Newman Tonks in 1989.

The Smith Wallis business was merged into NT Worcester Parsons which in 1998 was acquired by BASTA, Ireland's leading manufacturer of locks and builders hardware, who renamed the company Basta Parsons Ltd.



Basta has been manufacturing locks and builders hardware for over 45 years.

Basta has reviewed the entire range, including development of a Multi-point system and improved the lead times in all areas of production.

Stringent quality control procedures, combined with modern manufacturing techniques ensure that the products are of a consistently high quality.

This brochure brings together the most comprehensive selection of products available to specifiers and manufacturers for standard and W20, W40 and Crittall sections.

Contents

Casement Handles	3-4
Hookplates & Wedges.....	5
Duplex Casement Handles	6
Casement Stays	7
Stay Accessories	8-9
Sliding Stays	10
Window Catches	11
Plates & Keeps	12
Folding Openers	13
Restrictors	14-16
Friction Adjuster	17
Hinges	18-22
Bolts	23-24
Accessories	25
Multipoint Locking System	26

Finishes

Abbreviation	Finish	Abbreviation	Finish	Abbreviation	Finish
SCP	Satin Chrome	SS	Stainless Steel	ANOSH	Anosheen
RTD	Roto Toned Dark	NAT	Natural	RMB	Rumbled
RB	Roto Bright	GALV	Galvinised	PV	PASSIVATED
BLK	Black	SHER	Sheradised	SC	Self Colour
WHT	White	DRP	Durapass	SBRS	Solid Brass

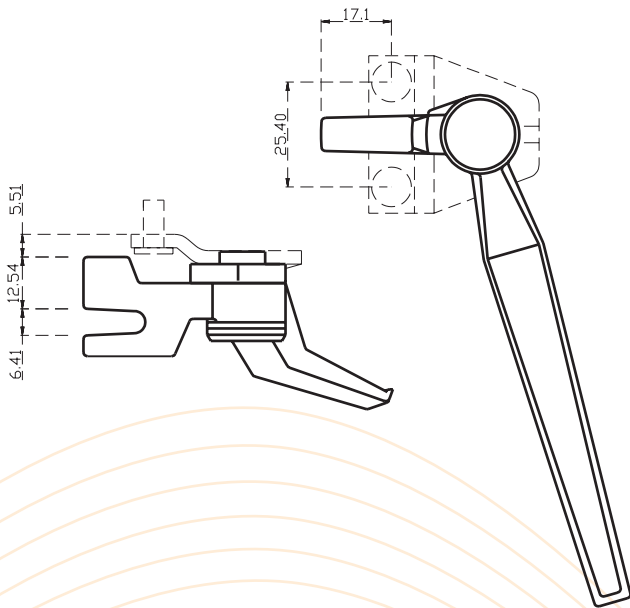
Bespoke finishes are available upon request
Unless otherwise stated all dimensions are in mm

Z148 Casement Handle and S099PFINA Backplate

Zinc diecast handle for standard steel windows. Fits to No. 990/9. Prefixed Steel Backplate by rear nut and lockwasher. Backplate supplied with pre-fixed rivets.

Product codes	Finishes
Z014800S99R1SC	SCP
Z014800S99L1SC	

- Please state right or left hand when ordering.
- Note: Backplate fixing aperture
- Back plates to be ordered separately
- A variety of wedges are available (see page 5)

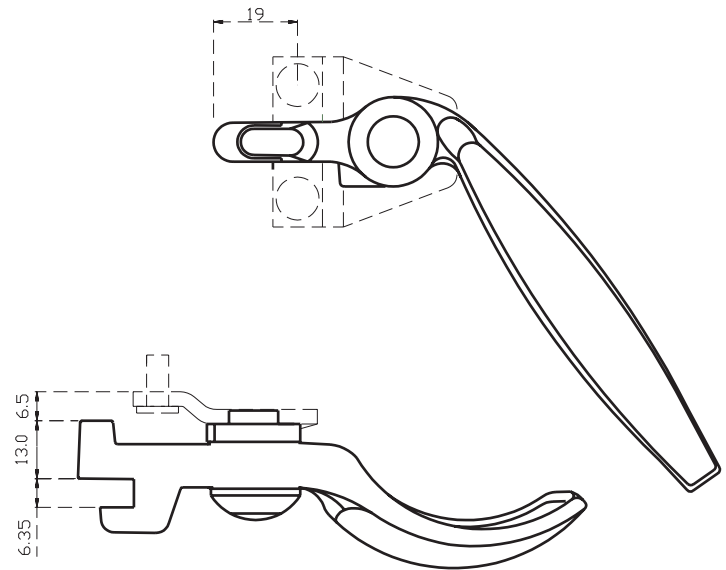


B158/707 Locking Casement Handle and S099PFINA Backplate

Hot forged brass handle. Fitted to No. 990/9 pre-fixed steel backplate by rear bolt and lockwasher.

Product codes	Finishes
B015800000L1XX	RTD; SCP; RB
B015800000R1XX	

- Please state right or left hand when ordering.
- A variety of wedges are available (see page 5)
- Back plates to be ordered separately

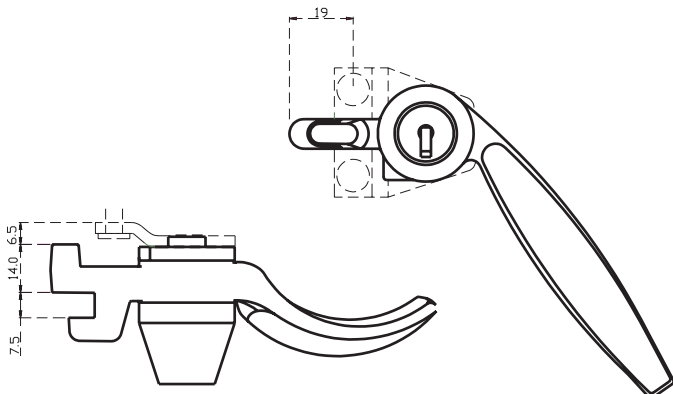


B158/707 Casement Handle and S099PFINA Backplate

Hot forged brass handle. Fitts to No. 990/9 pre-fixed steel backplate by rear bolt and lockwasher.

Product codes	Finishes
B015807070L1XX	RTD; SCP; RB
B015807070R1XX	

- Please state right or left hand when ordering.
- Back plates to be ordered separately
- A variety of wedges are available (see page 5)

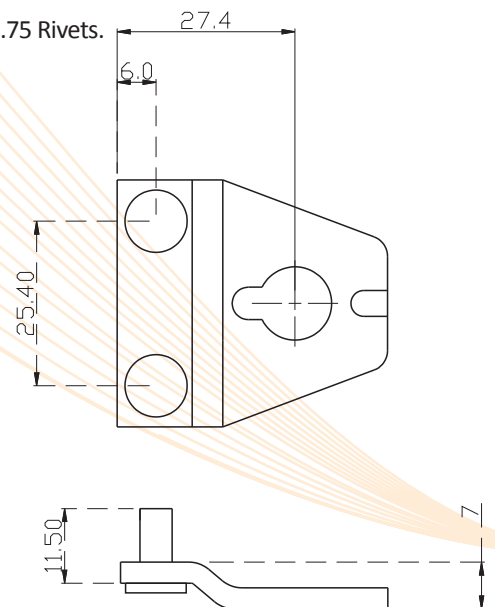


S990/9 PF Backplate

Steel Backplate with pre-fixed rivets for use with No. 158/707 locking handle and B158 and Z148.

Product codes
S09900009PF1NA

- Pre fix 04.75 Rivets.

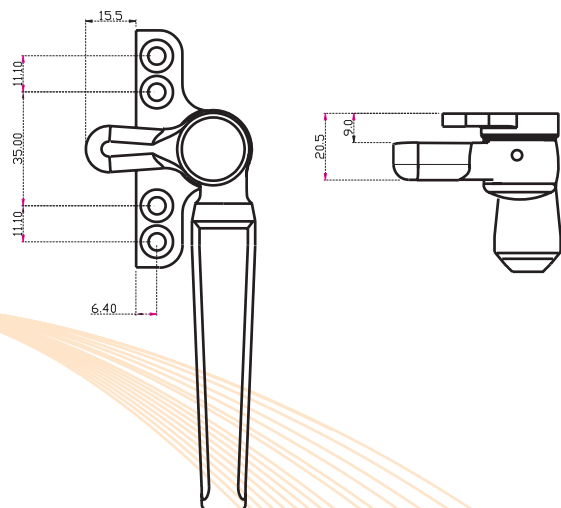


B195/111 SPT Non Locking Casement Handle

Hot forged brass single point handle for open-in application.

Product codes	Finishes
B019501113L1XX	RTD; SCP
B019501113R1XX	

- Please state right or left hand when ordering.
- Use No. 262 hook wedge (see page 5).

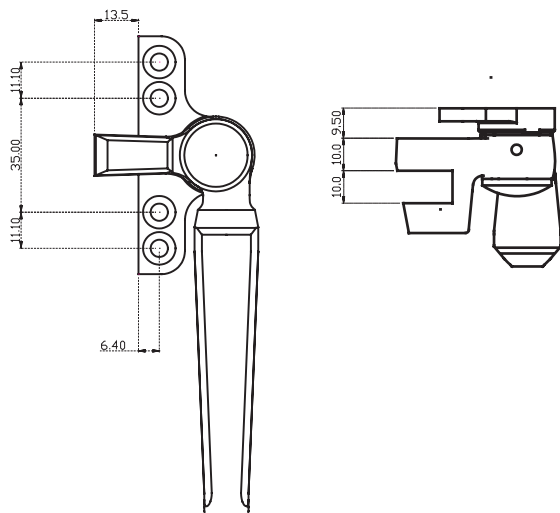


B195/111 Non Locking Casement Handle

Hot forged brass two point for open-out application.

Product codes	Finishes
BO19501114L1XX	RTD; SCP
BO19501114R1XX	

- Please state right or left hand when ordering.
- A variety of wedges are available (see page 5)

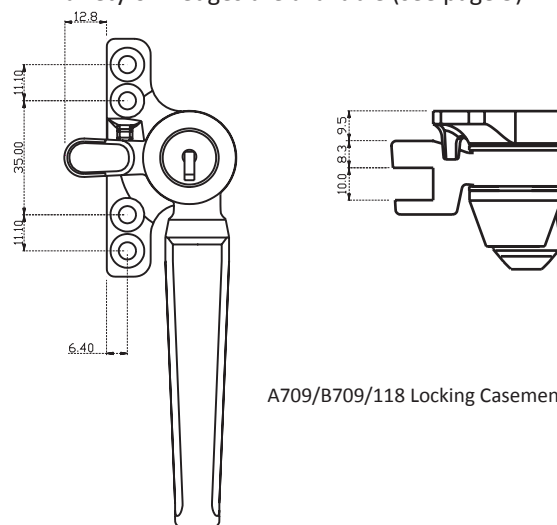


A709/118 B709/118 Locking Casement Handles

Hot forged Aluminium or Brass key locking two point handle with zinc die cast lock barrel for open-out application.

Product codes	Finishes
A070901182L8AN	Anosh
A070901182R8AN	
B0709M118L2RD	RTD; SCP
B0709M118R2RD	
B0709M118LISC	
B0709M118RISC	

- Please state right or left hand when ordering.
- A variety of wedges are available (see page 5)



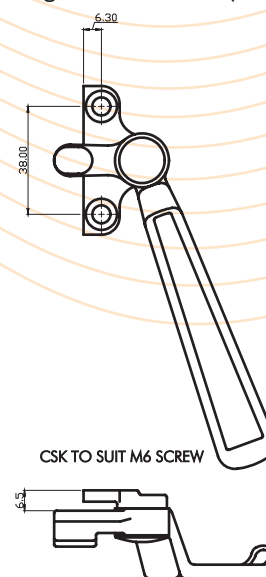
A709/B709/118 Locking Casement Handle

B184 Casement Handle

Hot forged Brass

Product codes	Finishes
B01840000L1xx	RB, RTD, SCP
B01840000R1xx	

- Please state right or left hand when ordering.
- A variety of wedges are available (see page 5)

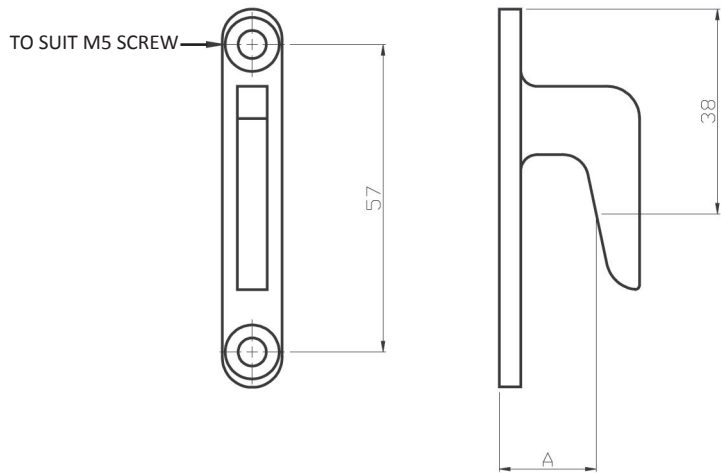


CSK TO SUIT M6 SCREW

B262 Brass Hook Wedge

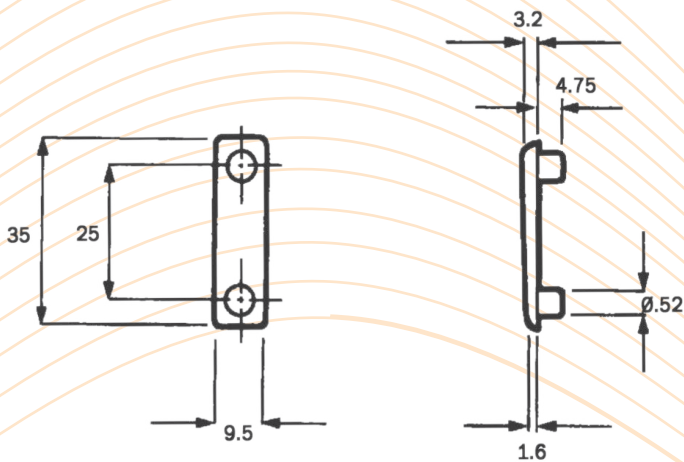
For open in applications. Two sizes available: 18mm and 22mm (Dimension A). 2mm packer is available to provide both 20mm and 24mm extensions.

Product codes	Finishes
B02620018001XX	RTD; SCP
B02620022001XX	



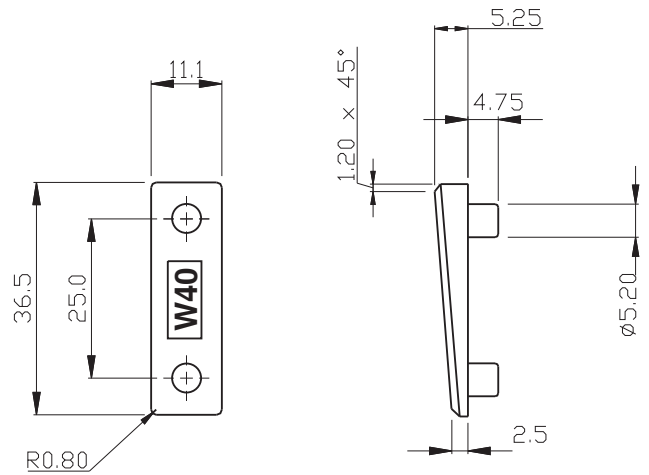
B558 Brass Wedge (SMW)

Product codes	Finishes
B05580000001NA	NAT



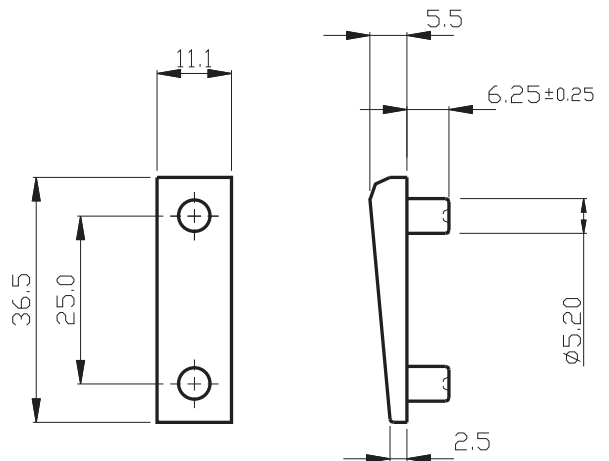
B650 Brass Wedge (W40)

Product codes	Finishes
B06500000001RU	RMB



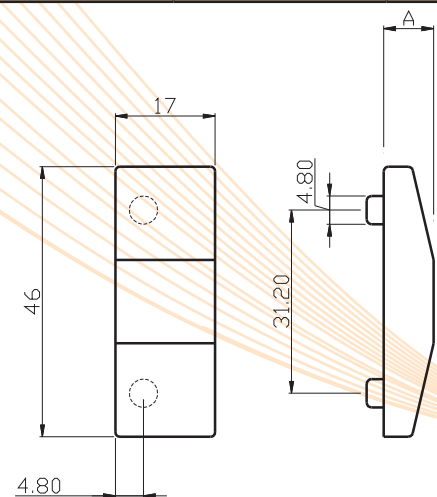
B651 Brass Wedge (W20)

Product codes	Finishes
B06510000001RU	RMB



N77/N 77T NYLON Wedge and N63

Product codes	Finishes	A =
N00770000001XX	BLK; WHT	8.5
N00770000001NB	BLK; WHT	5.3

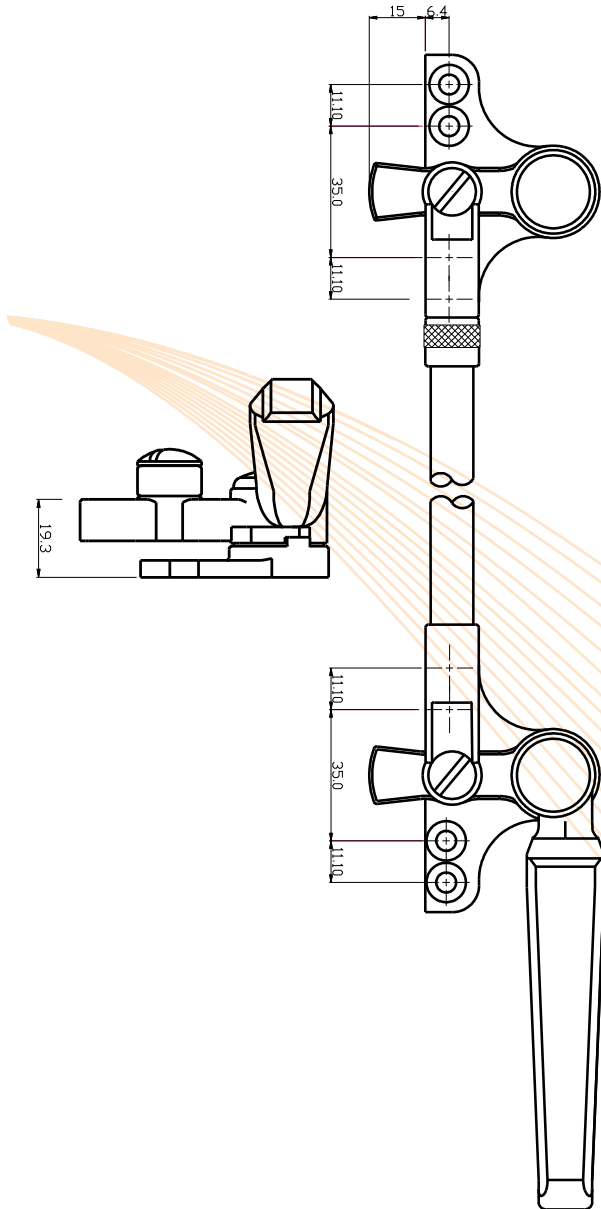


B195/111 K/4 Duplex Set

Hot forged brass single point duplex handle for open-in application.

Product codes	Finishes
B019501117RKXX	RTD; SCP
B019501117LKXX	

- Please state right or left hand when ordering.
- Use No. 262 hook wedge.
- Use B646 Connecting Rods.

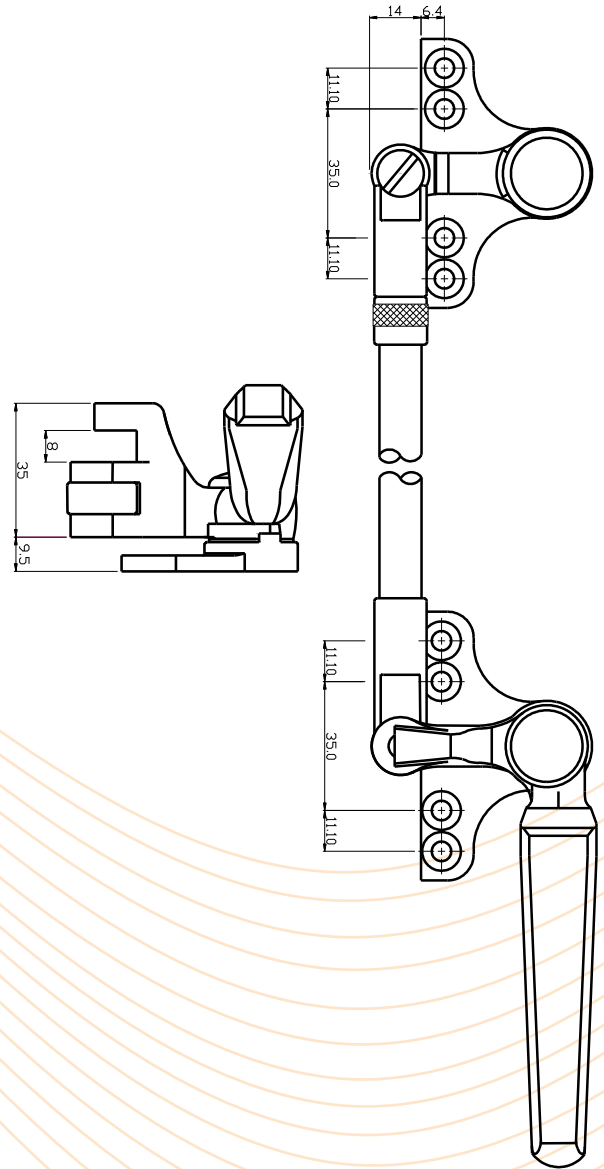


B195/111 K/5 Duplex Set

Hot forged brass two point duplex handle for open-out application.

Product codes	Finishes
B019501118RKXX	RTD; SCP
B019501118LKXX	

- Please state right or left hand when ordering.
- A variety of wedges is available, see page 5
- Use B646 Connecting Rods.



B646 Connecting Rods

Brass rods, with brass connectors and ferrules to 'match'.

Measured between centres of handle and nose

Product codes	Standard Sizes	Finishes	Please note:
B06460600121XX	600mm x 12.5mm	RTD; SCP	Rods are pre drilled for K5 duplex. If used in K4 Duplex connecting holes will require widening.
B06460750121XX	750mm x 12.5mm		
B06460900121XX	900mm x 12.5mm		
B06461050121XX	1050mm x 12.5mm		
B06461200121XX	1200mm x 12.5mm		

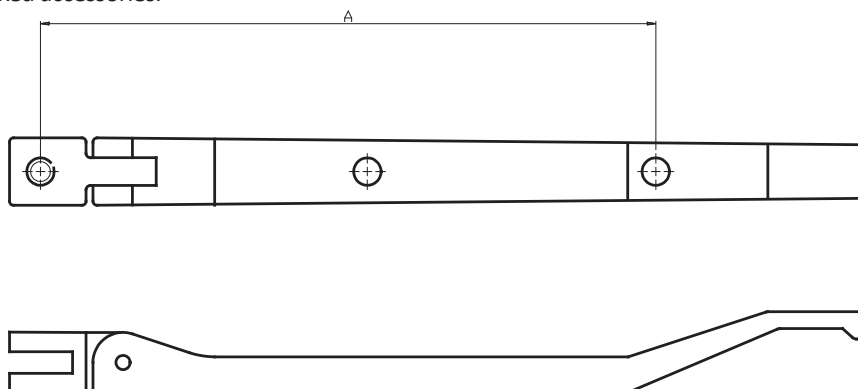
Z348 Pegstay

Zinc diecast pegstay for standard steel windows.

Product codes	Finishes
Z03480150002SC	SCP
Z03480210002SC	

DIM A	
150	210

- Use with No. 321 series of steel pre-fixed accessories.



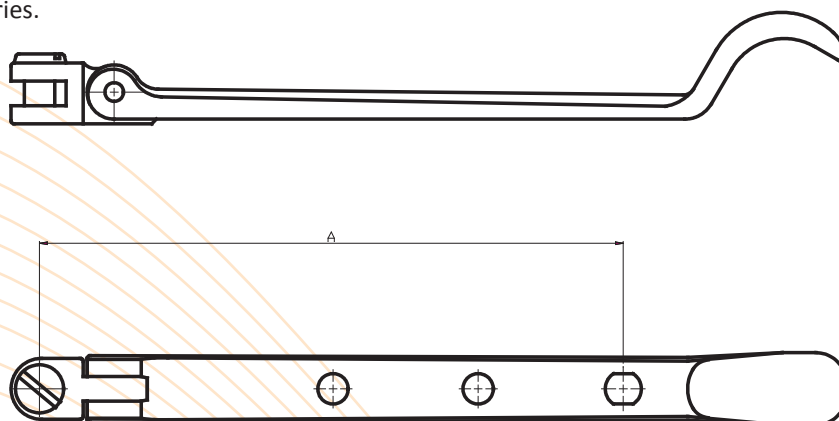
B375 Pegstay

Hot forged brass pegstay.

Product codes	Finishes
B03750155001XX	RTD; RB; SCP
B03750200001XX	

DIM A	
150	200

- See pages 8 and 9 for Stay Accessories.



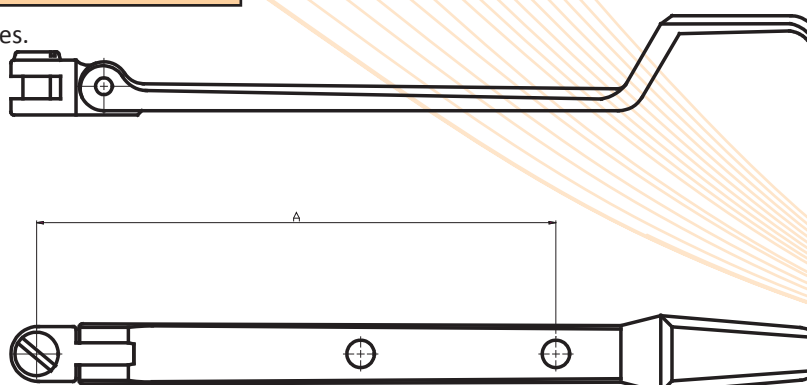
B395 Pegstay

Hot forged brass pegstay.

Product codes	Finishes
B03950150001XX	RTD; RB; SCP
B03950200001XX	
B03950250001XX	
B03950300001XX	

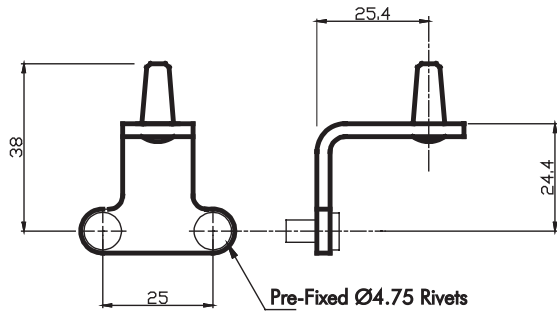
DIM A			
155	200	250	300

- See page 8 and 9 for Stay Accessories.



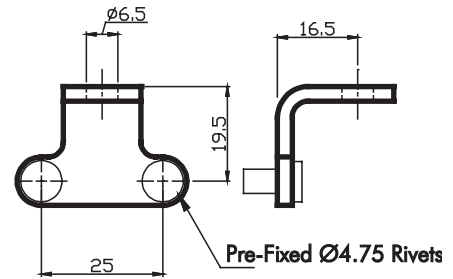
S321/2 Side Hung Pin

Product codes	Finishes
S03210000201NA	NAT



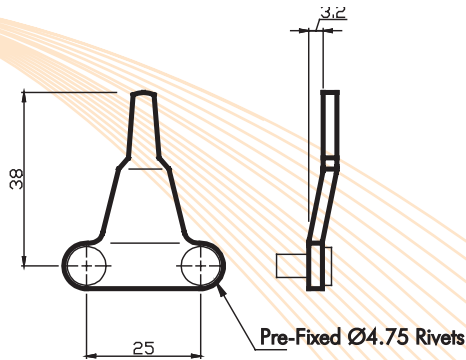
S321/4 Fixing Bracket

Product codes	Finishes
S03210000401NA	NAT



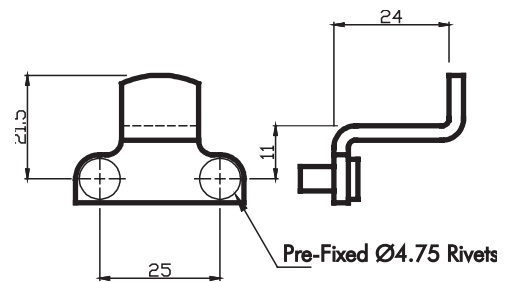
S321/5 Top Hung Pin

Product codes	Finishes
S03210000501NA	NAT



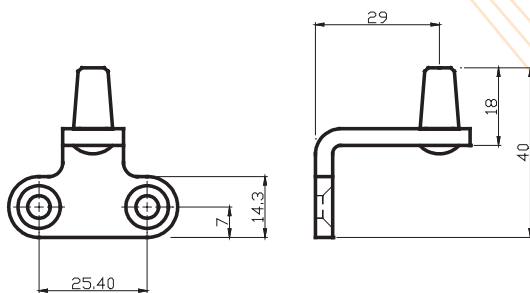
S321/6 Top Hung Rest

Product codes	Finishes
S03210000601NA	NAT



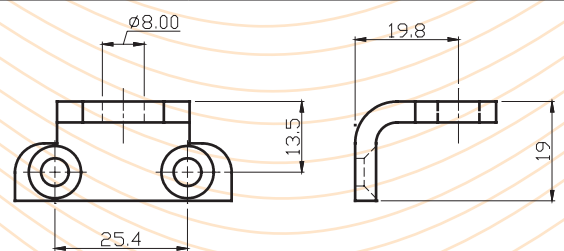
B375S Side Hung Pin

Product codes	Finishes
B037500000S1XX	RTD; SCP



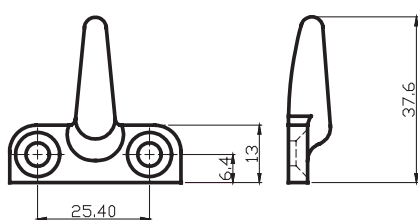
B375 O/G Fixing Bracket

Product codes	Finishes
B03750000001XX	RTD; SCP



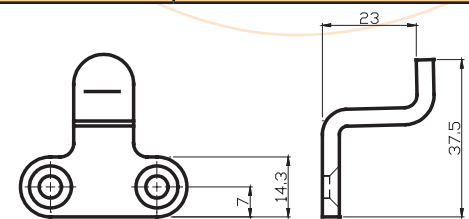
B375P Top Hung Pin

Product codes	Finishes
B037500000P1XX	RTD; SCP



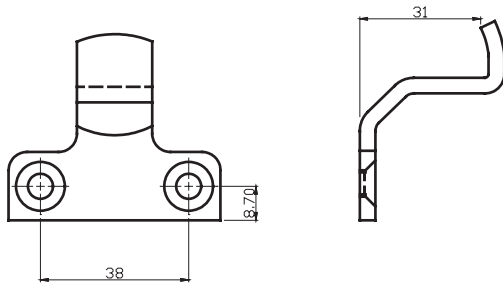
B375R Top Hung Rest

Product codes	Finishes
B037500000R1XX	RTD; SCP



B608 Top Hung 2 Hole Stay Rest

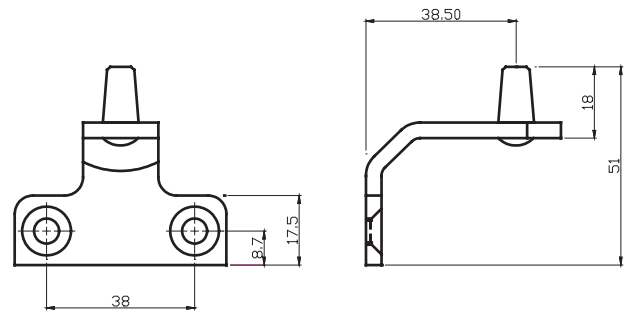
Product codes	Finishes
B06080000001XX	RTD; SCP



CSK TO SUIT M6 SCREW

B609 Side Hung 2 Hole Stay Pin

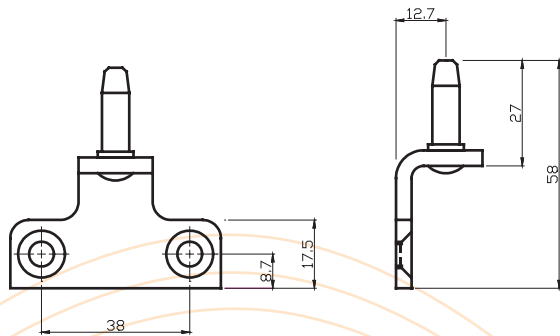
Product codes	Finishes
B06090000001XX	RTD; SCP



CSK TO SUIT M6 SCREW

B610 Top Hung Pin

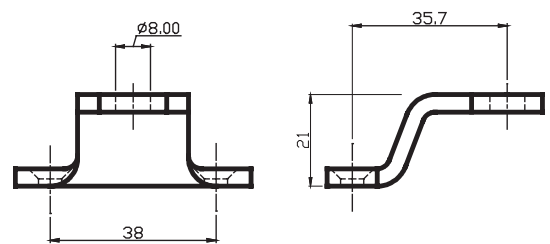
Product codes	Finishes
B06100000001XX	RTD; SCP



CSK TO SUIT M6 SCREW

B626 i/g Fixing Bracket

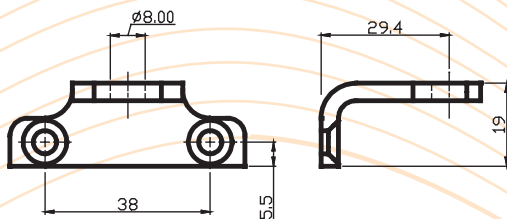
Product codes	Finishes
B06260000002XX	RTD; SCP



CSK TO SUIT M5 SCREW

B626 o/g Fixing Bracket

Product codes	Finishes
B06260000001XX	RTD; SCP

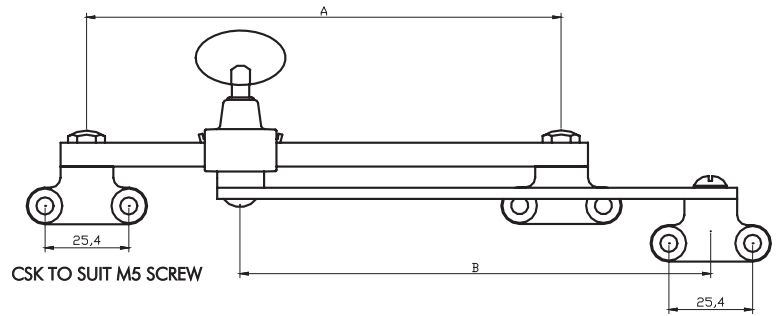


CSK TO SUIT M5 SCREW

S58 Slide Stay

Twin bar slide stay for open-out standard steel windows. Bronze top bar - steel galvanised lower bar, zinc diecast box with brass thumb turn. Fixing brackets sheradized steel with countersunk holes: Thumb turn: brass.

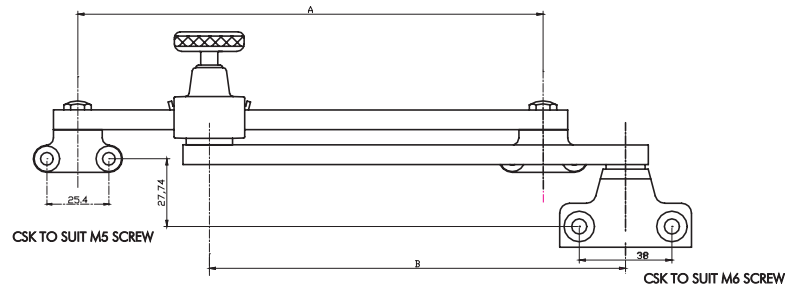
Product codes	Top Bar A	Bottom Bar B	Finishes
S00580250001SH	250	210 mm	SHER
S00580300002SH	300	210 mm	



A59/B59 Slide Stay

Two-bar slide stays produced in brass or aluminium. Standard fixing for outward opening windows (o/o) and for outside glazing conditions (o/g). Also available for opening in and I/G windows (subject to quantity).

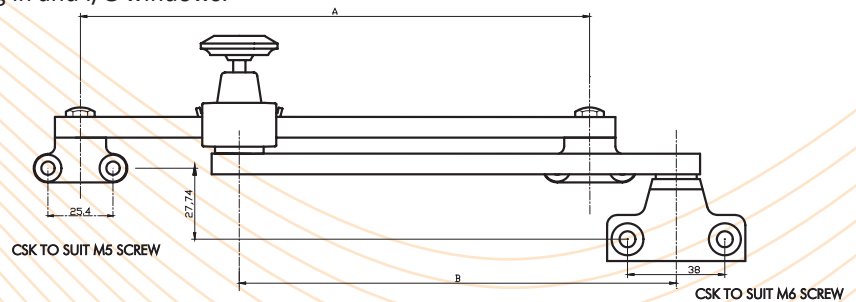
Product codes	Top Bar A	Bottom Bar B	Finishes
B005902100N1xx	210	180 mm	RTD; SCP
B005902600N1xx	260	230 mm	
B005903100N1xx	310	280 mm	
A005902100T1AN	210	180 mm	ANOSH
A005902600T1AN	260	230 mm	
A005903100T1AN	310	280 mm	



B59 Spring Plunger Stay

Two-Bar spring plunger stay produced in Brass. The stay allows the window to be secured in a variety of positions and released using the spring plunger. Ensures window remains in the same position once opened and set. Standard fixing for outward opening windows (o/o) and for outside glazing conditions (o/g). Also available for opening in and I/G windows.

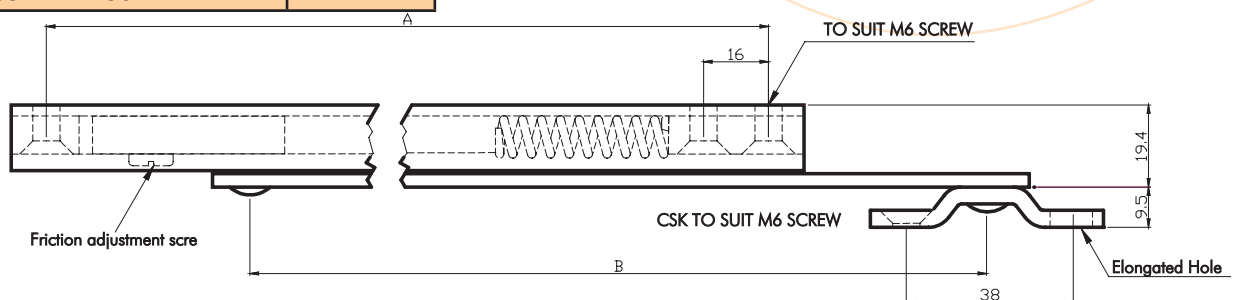
Product codes	Finishes
B005902100N2xx	RTD, SCP
B005902600N2xx	
B005903100N2xx	



B572 D/B572 Concealed Friction Stay

Adjustable heavy duty friction stay with brass extruded channel and sheradized steel arm. 'D' version includes spring to reduce the effects of violent opening. Concealed mounting. N.B. Not suitable for door with extended/project hinges.

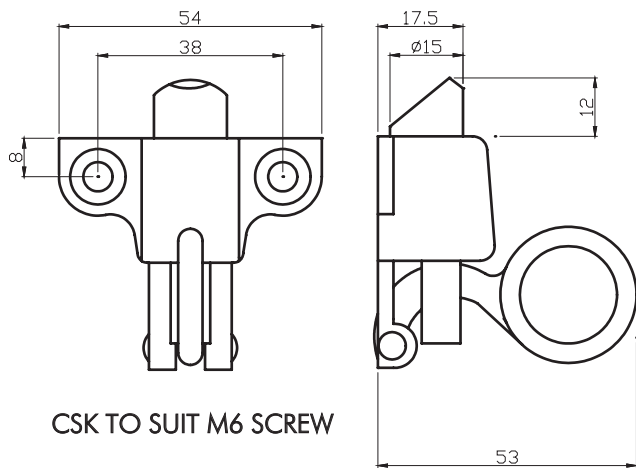
Product codes	Dimensions A x B	Finishes
B05720290D01NA	290 mm x 315 mm	NAT
B05720255001NA	255 mm x 190 mm	NAT



B36 Spring Catch

Hot-forged brass spring-load catch for use on open-in application.

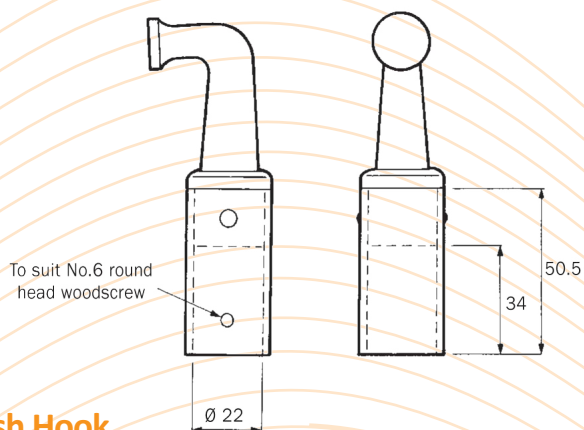
Product codes	Finishes
B00360000001XX	RTD, SCP



A76 Pole Hook

Hot forged aluminium pole hook rivetted to aluminium tube. Suitable for all types of folding openers and ring type catches.

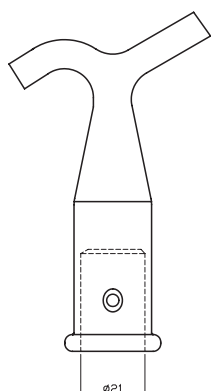
Product codes	Finishes
A00760000001AN	ANOSH



Sash Hook

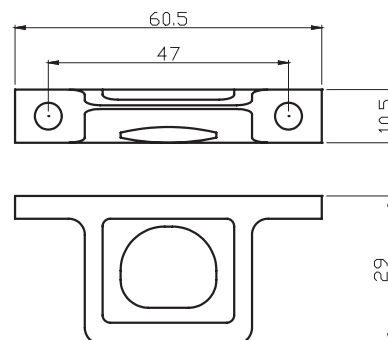
Length: 115mm, base diameter: 22mm

Product codes	Finishes
BJ430	SBRS



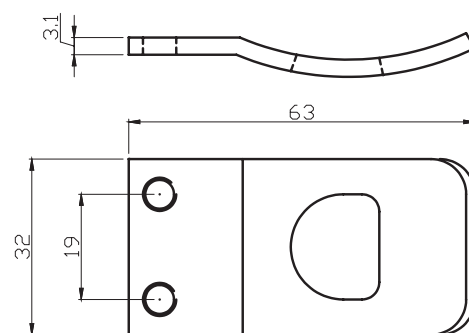
Z41/36 CATCHPLATE

Product codes	Finishes
Z00410036001PV	PV; SCP
Z00410036001SC	



S739 CATCHPLATE

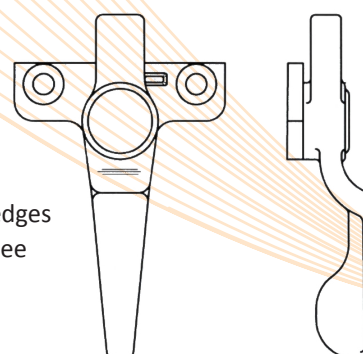
Product codes	Finishes
S073900000S1SH	SHER



B816 Turn Button

Hot forged brass. Suitable for open in and open out windows. Available right and left hand. Please state when ordering.

Product codes	Finishes
B08160000NL1xx	RTD, SCP
B08160000NR1xx	

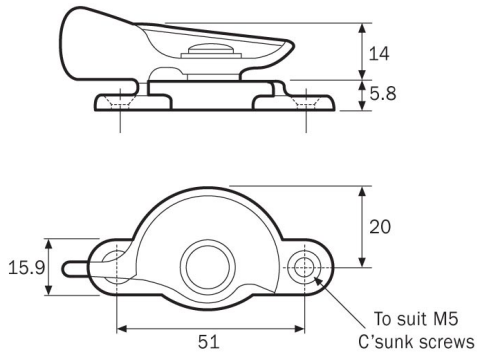


A variety of wedges are available (see page 5)

A672 Fitch Catch

Hot-forged aluminium catch for vertical sliding windows. Right hand only.

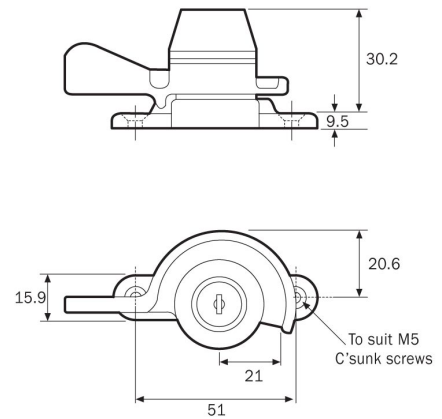
Product codes	Finishes
A067200000R1AN	ANOSH



A710 Locking Fitch Catch

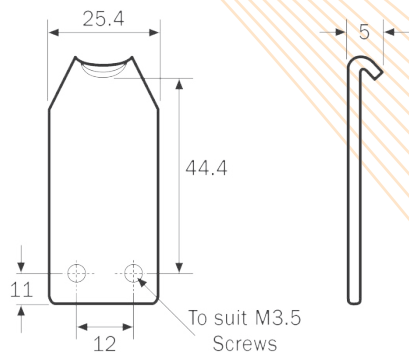
Hot forged aluminium key locking fitch catch with zinc diecast, Satylite chrome lock housing. Available right hand only.

Product codes	Finishes
A0710M000003AN	ANOSH



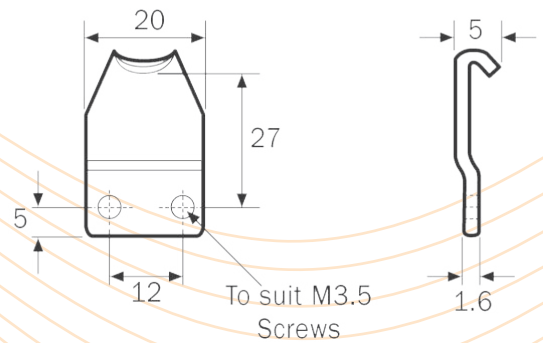
G224T Inserted Fixing Fitch Catch Keep

Product codes	Finishes
S022400000T1SS	SS



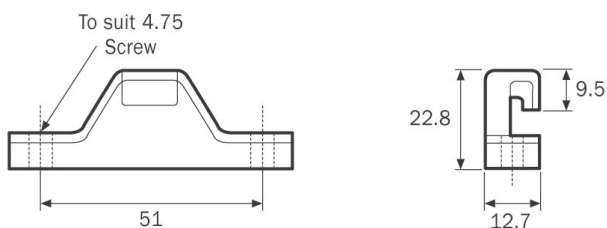
G168A Inserted Fixing Fitch Catch Keep

Product codes	Finishes
S01680000A01SS	SS



S672 Vertical Fixing Fitch Catch Keep

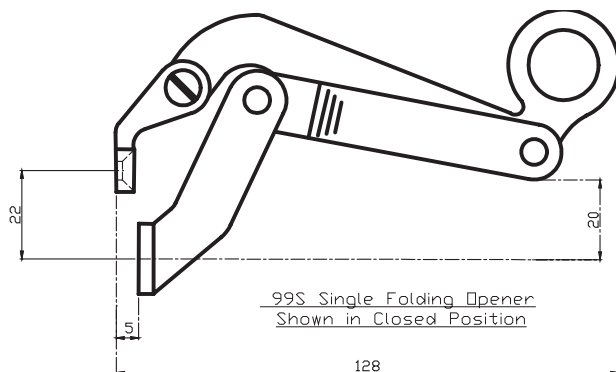
Product codes	Finishes
S06720000001SS	SS



B99S Single Folding Opener

This opener is a popular general purpose fitting and will fit readily on most steel or aluminum windows. When used on thick sections over 5mm it may be necessary to use packings to obtain the correct bracket position, as illustrated, to give the over-centre locking action. The lower bracket has elongated holes to allow for final adjustment.

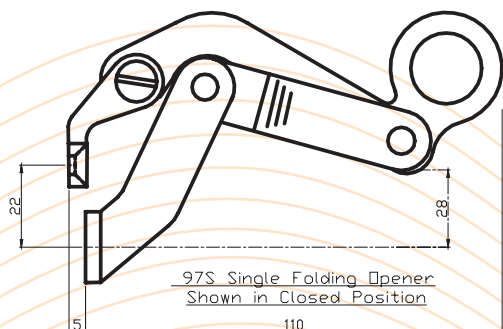
Product codes	Finishes
B009900000S1XX	RTD; SCP



B97S Single Folding Opener

As 99S but restricted to 100mm opening.

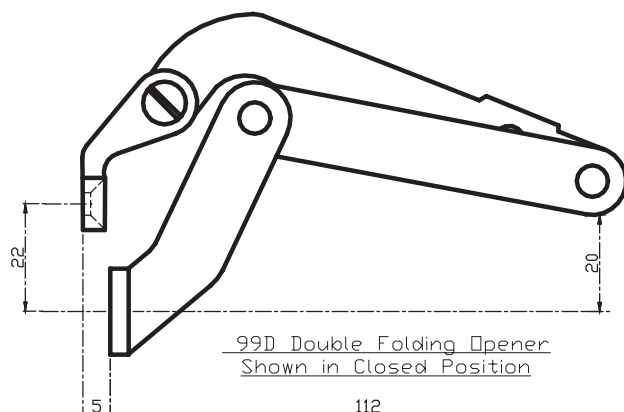
Product codes	Finishes
B009700000S1SC	RTD; SCP



B99D Double Folding Opener

This double Opener is widely used as a general purpose double opener and is applicable to many sections both aluminium and steel. The fixing details for each unit are the same as for the No. B99S. Pole Rings can be fitted for long arm operation, but not necessary if the tube is within reach for hand operation.

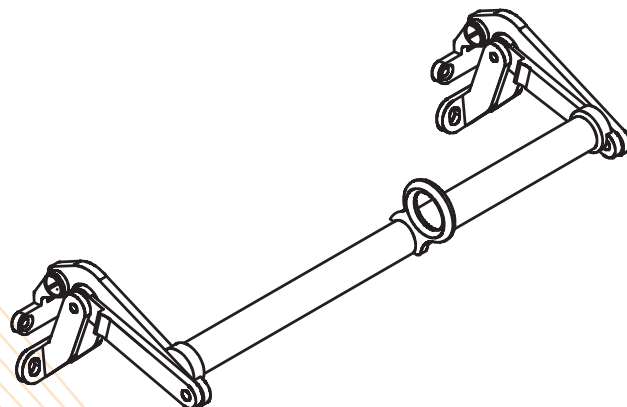
Product codes	Finishes
B009900000D1XX	RTD; SCP



B99 Link Tubes

The tubes supplied are 16mm in diameter and are made to suit openers fixed at the following centres:

Product codes	450mm	600mm	750mm	900mm	Finish	With Ring
B009904500D1RD	•				RTD	
B009904500D1SC	•				SCP	
B009904500R1SC	•				SCP	•
B00990450RD1RD	•				RTD	•
B009906000D1RD		•			RTD	
B009906000D1SC		•			SCP	
B00990600RD1RD		•			RTD	•
B00990600RD1SC		•			SCP	•
B009907500D1RD			•		RTD	
B009907500D1SC			•		SCP	
B00990750RD1RD			•		RTD	•
B00990750RD1SC			•		SCP	
B009909000D1RD				•	RTD	
B009909000D1SC				•	SCP	
B00990900RD1RD				•	RTD	•
B00990900RD1SC				•	SCP	•

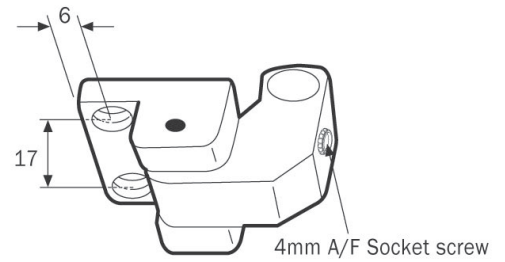


As a general rule the openers should be fitted at centres greater than half the window width

Z791 Restrictor Stop

Zinc diecast Satin chrome body with releaseable aluminium tongue. Socket head screw secures the tongue in closed position. For vertical sliding sash applications.

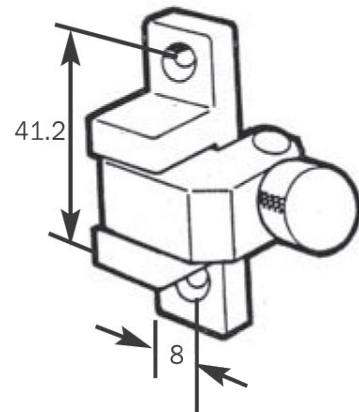
Product codes	Finishes
Z07910000002SC	SCP



A791 Restrictor Stop

Aluminium body with releaseable aluminium tongue. Screw secures the tongue in closed position. For vertical sliding sash applications.

Product codes	Finishes
A07910000071LW	WHT (PC)

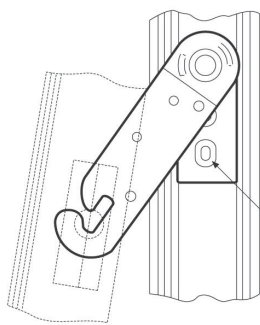


S786/3 Locking Restrictor

A key locking restrictor for aluminium window. Released by means of a key and automatically relocks when closing a window. If friction stays are used on window then, No. 789 Keep is required. Packer required to give 786/1. Height (14,5mm).

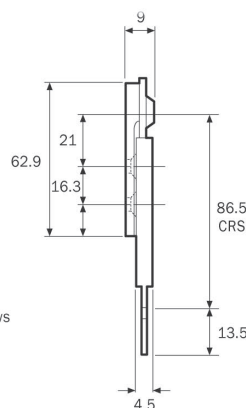
Product codes		Finishes
Z0786000003L1SC	Left Hand	SCP
Z0786000003R1SC	Right Hand	
Z07860000001SC	Key	

786 KEY



RH Shown

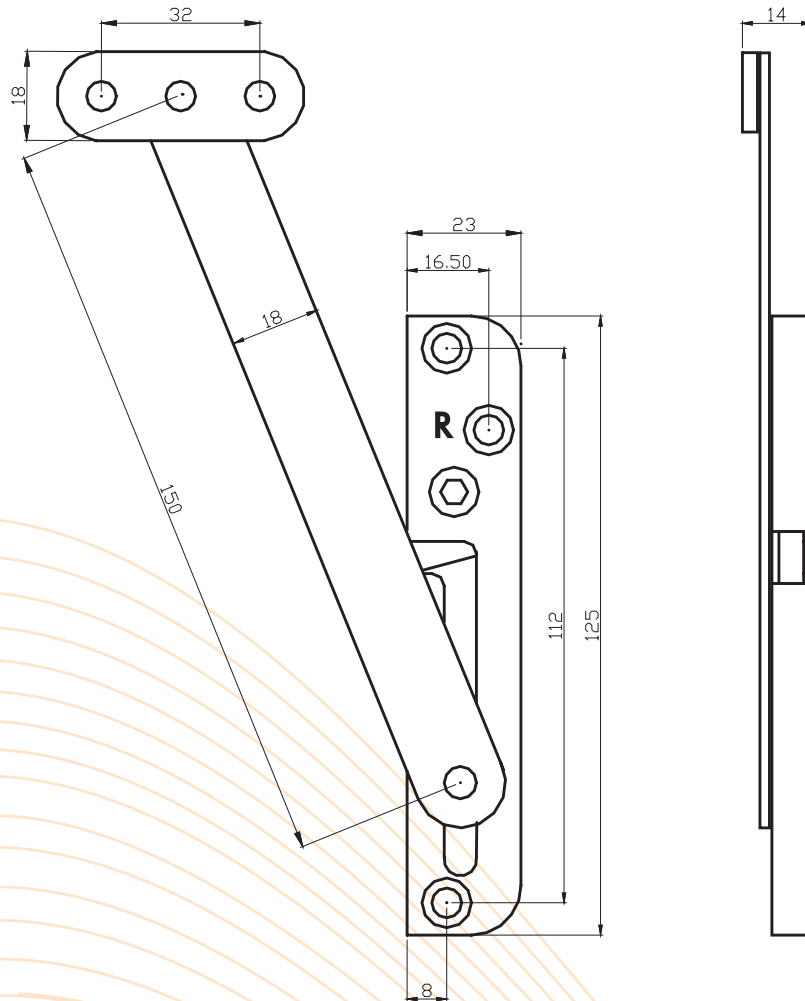
To suit M5
C'sunk screws



Security Restrictor (Key Locking)

Lockable restrictor, top and side hung, horizontal and vertical pivots. Right or Left handed. Uses 4mm allen key.
Material: Pressed Steel - with high performance plated finish.

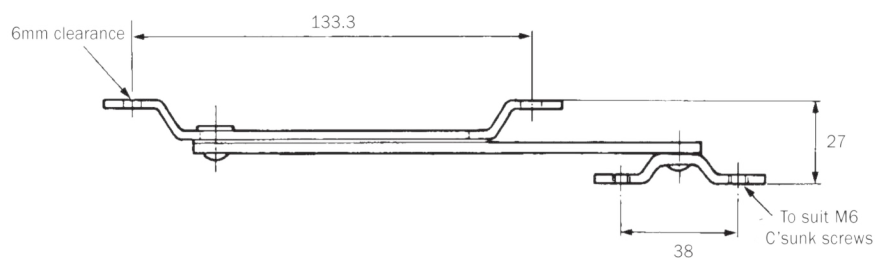
Product codes	Finishes
4463LH	DRP
4463RH	DRP



B571 Releaseable Side Arm

Concealed releaseable side arm. Available only in pairs.

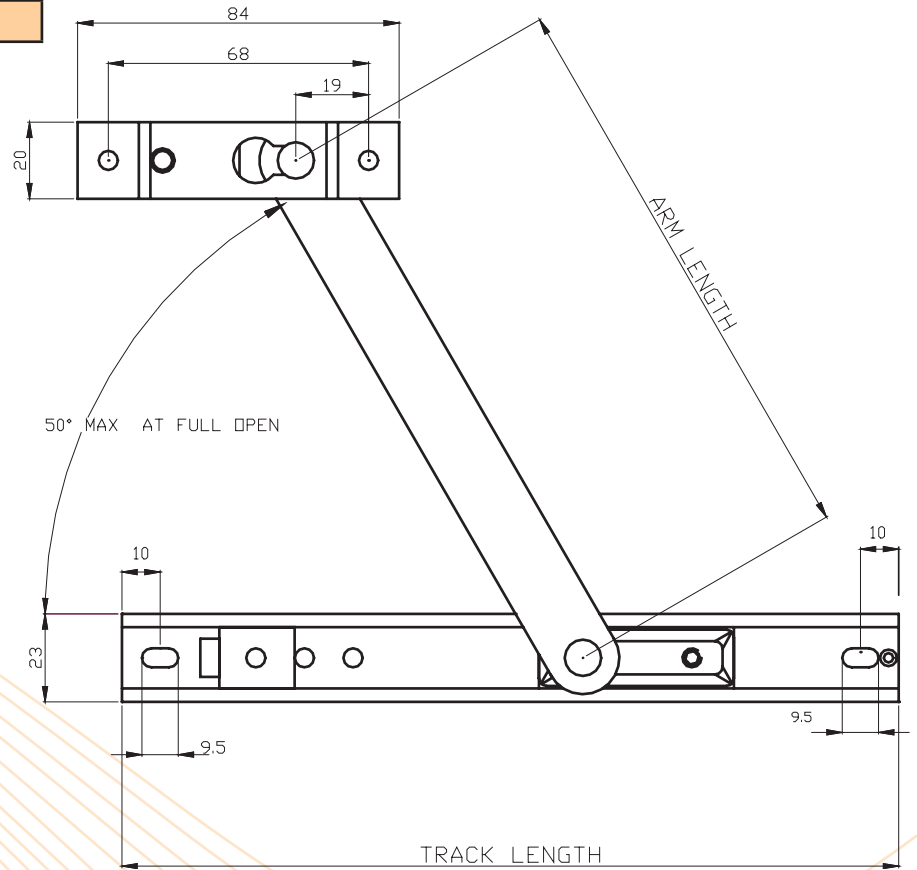
Product codes	Size	Finishes
B05710150B01NA	150MM	SC



MA 419 Magnum Restrictor Lockable

Lockable arm restrictor. Manufactured from 300 Austenetic Stainless Steel and brass slider.

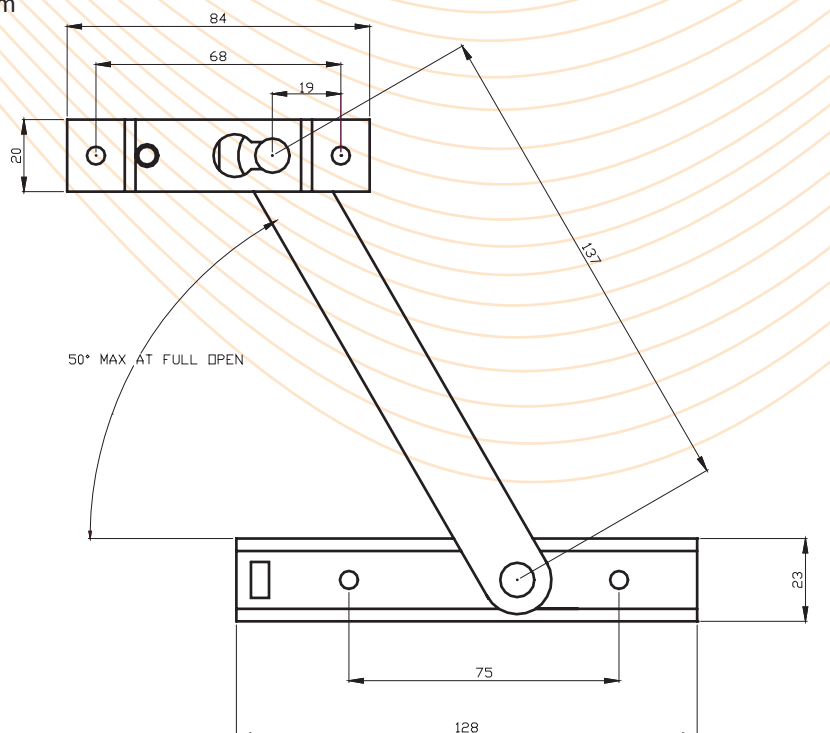
Product codes	Arm	Track	Finish
MA419	6"	7.25"	SS
MA419/08-10	8.00"	10.00"	SS



MA 419-17V Magnum Restrictor Lockable

Lockable arm restrictor for smaller windows. Manufactured from 300 Austenetic Stainless Steel and brass slider.

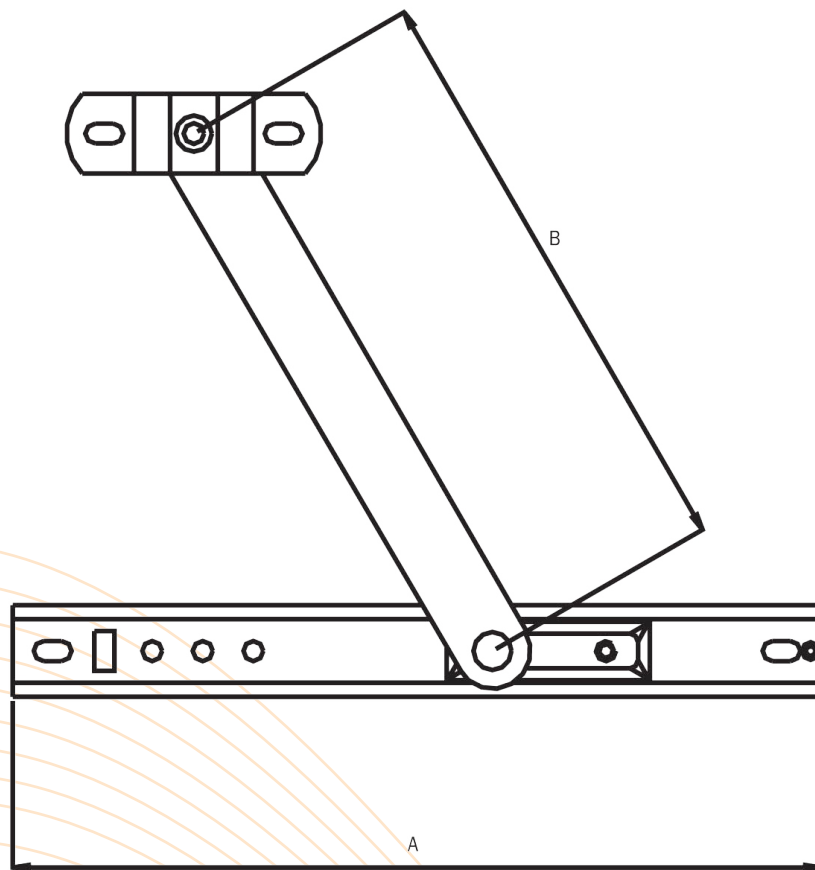
Product codes	Arm	Track	Finish
MA419-17V	5.5"	5"	SS



Friction Adjuster

Manufactured from 300 Austenetic Stainless Steel and brass slider.

Product codes	Track "A"	Arm "B"	Finish
MA178	10"	8"	SS
MA179	12"	8"	SS
MA532/06-08	8"	6"	SS

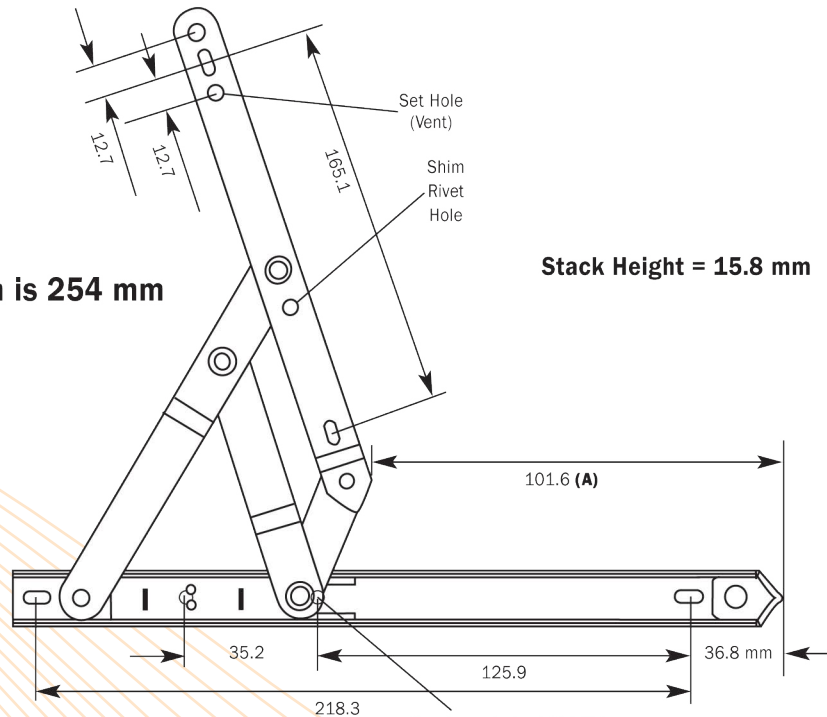


Magnum 4000 Series Side Hung Heavy duty 4 bar Hinges

Manufactured from 300 Austenetic Stainless Steel and brass slider.

Product codes	Size	Min/Max Vent Width	Std. Degree Opening	Max Weight	Finish
MA4010	254MM	279.4 to 660.4	75°	34.5kg	SS
MA4012	305MM	508 to 838.2	20°/30°/40° w/stop	52.0kg	SS
			80° w/o stop		

Diagram shown is 254 mm



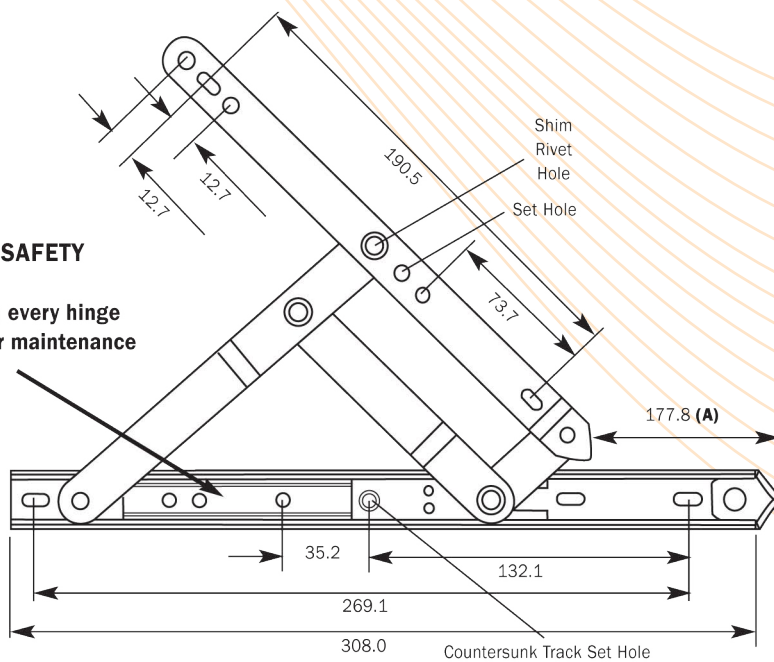
Stack Height = 15.8 mm

Diagram shown is 305 mm

Stack Height = 15.8 mm

ADJUSTABLE SAFETY LIMIT STOP

- Standard with every hinge
- Removable for maintenance or washing (B)

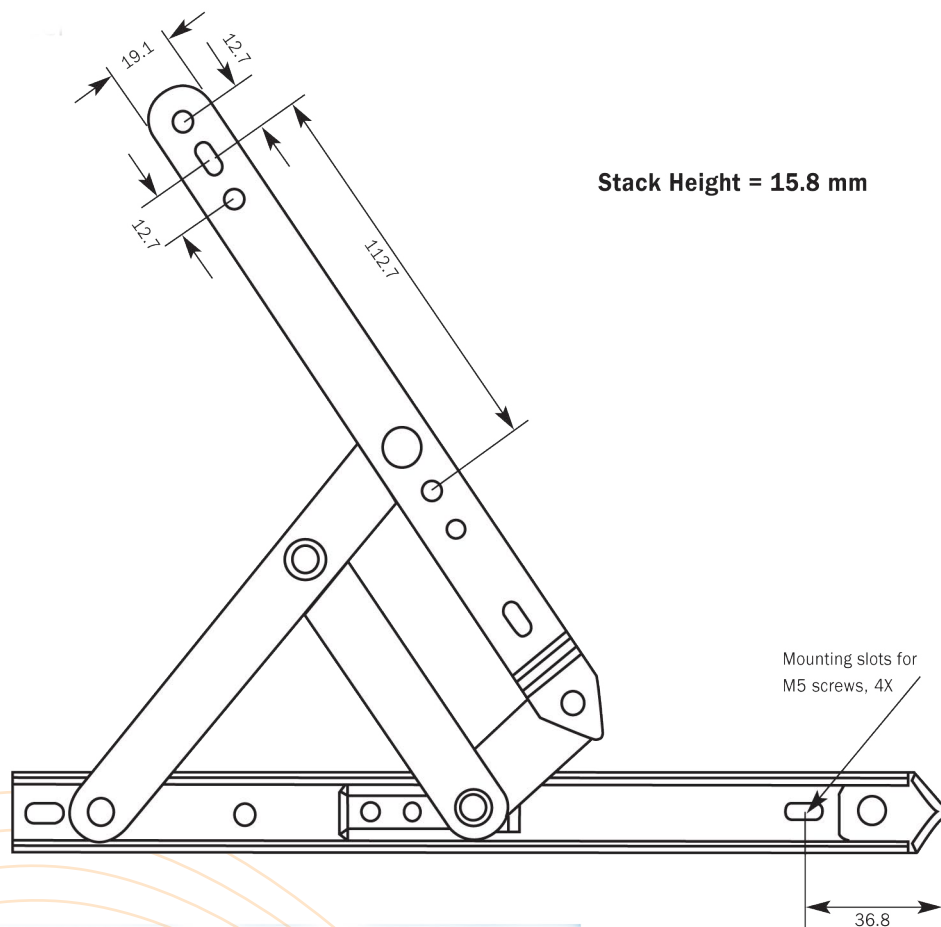


(A) Fully open with safety stop removed

(B) Recommended to be fastened by a security screw (M5) to prevent unauthorised removal.

Magnum 2000 Series Top Hung Heavy duty 4 bar Hinges

Manufactured from 300 Austenetic Stainless Steel and brass slider.



Product codes	Size	Min/Max Vent Width	Opening Angle	Max Weight	Finish
MA210	254mm	268 to 635mm	75°	38.6kg	SS
MA212	305mm	508 to 762mm	60°	45.5kg	SS
MA216	406mm	762 to 1016mm	49°	56.7kg	SS
MA220	508mm	1016 to 1270mm	49°	72.6kg	SS
MA224	600mm	1270 to 1524mm	30°	81.8kg	SS

Non-handed "speed cap"



Large contact area and immediate "pull-in" of sash to prevent weather strip problems



Dual-sided containment of vent bar to prevent any sash play

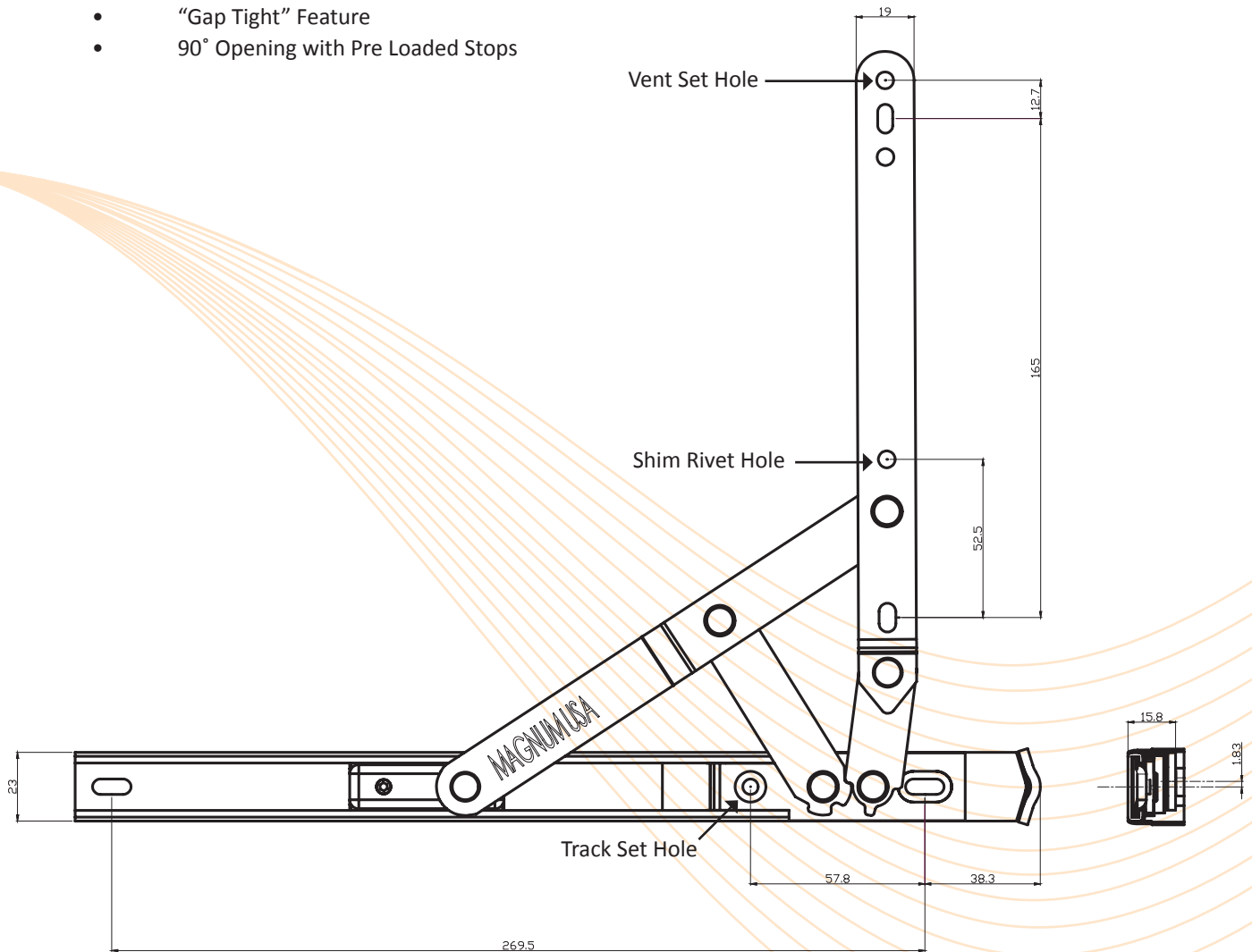
Magnum 5012 Egress Heavy Duty 4 bar Hinge

Heavy duty 4 bar hinge suitable for fire escape openings due to egress function. Manufactured from Austenetic Stainless Steel and brass slider.

Product codes	Size	Max Vent Width	Max Vent Weight	Max Rotational Load	Finish
MA5012	12"	36"	160 lbs	50lbs	SS

SPECIFICATIONS

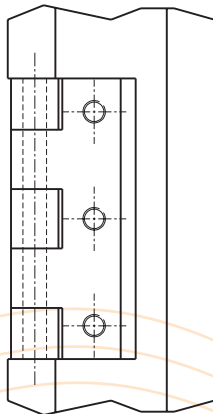
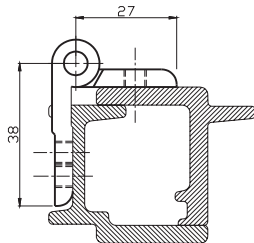
- Non Handed
- Solid Brass Shoe and Bearing Surfaces
- "Gap Tight" Feature
- 90° Opening with Pre Loaded Stops



B1260 Brass Hinge

Brass Butt Hinge for top hung and side hung applications. For windows and doors. Features security pins. **Shown on W20.**

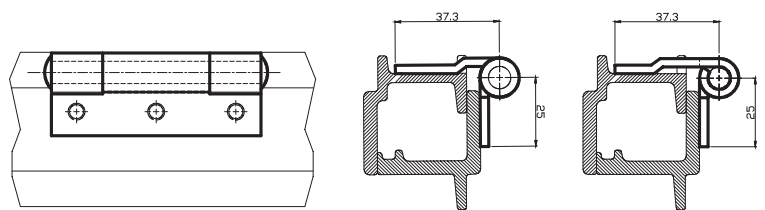
Product codes	Size	Finishes
B1260S075XX	75mm	SCP; SC
B1260S100XX	100mm	SCP; SC



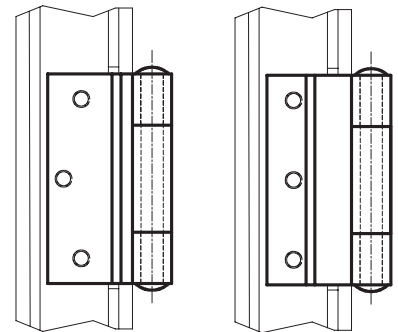
S1261/B Steel Hinge

Pressed steel butt hinge for top hung and side hung applications. For windows and doors. **Shown on W20.**

Product codes	Size	Finishes
S12610075001GA	75mm	GALV
LS126100750B1GA	75mm	GALV



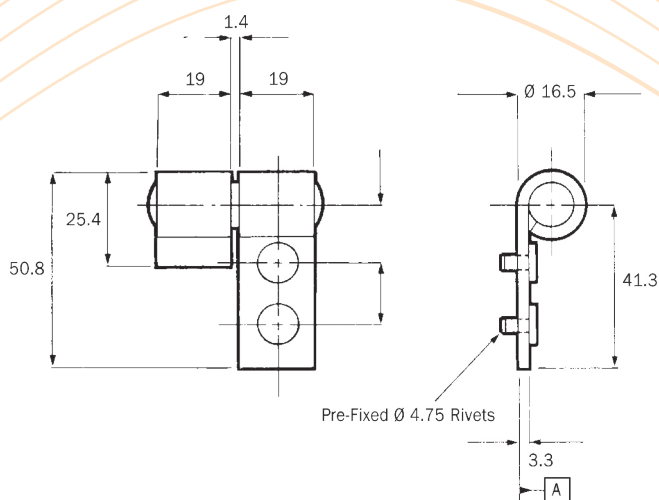
1261 B



B543B Steel Hinge

Steel Hinge with brass pin for standard steel top hung windows. Long leaf with pre-fixed rivets. Short leaf for welding on. Complete with spare pear blank for 'S' type application.

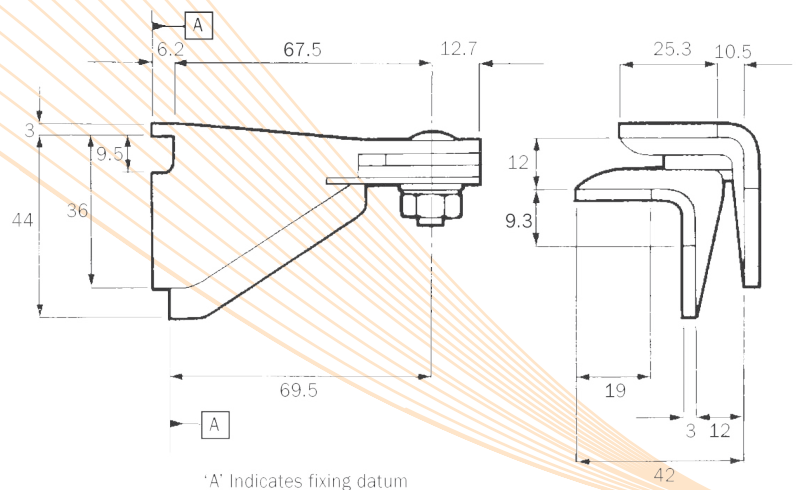
Product codes	Finishes
B05430000B1NA	NAT



S1025 Steel Friction Hinge

Steel extended projection friction hinge for standard steel side hung windows. Direct weld to sections. Steel pin. Sold in pairs..

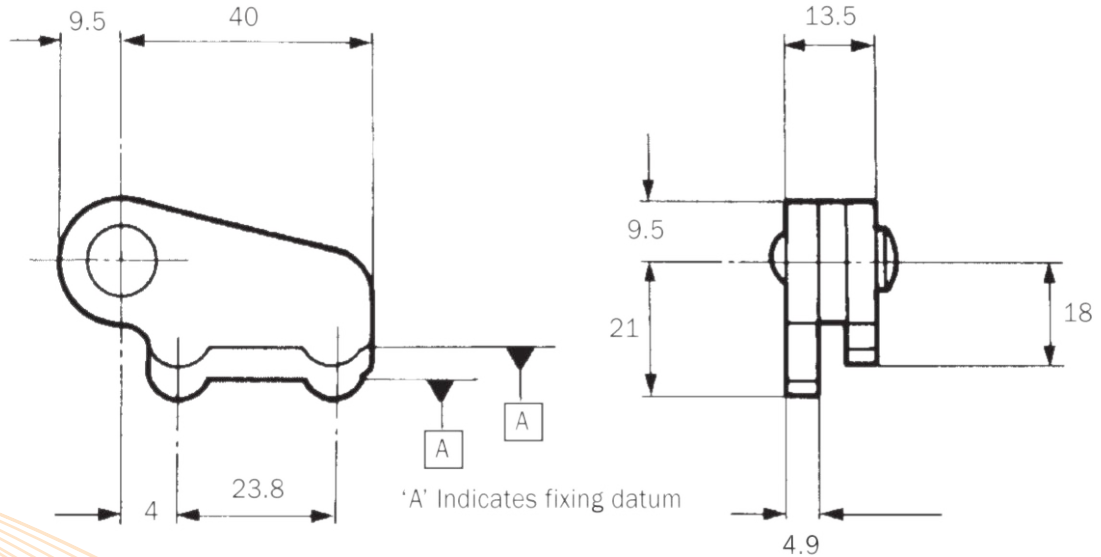
Product codes	Finishes
S102500000U1NA	NAT



S520 Corner Hinge

Steel weld on hinge with 7.9mm steel pin for W20 steel windows. Project weld legs.
Unassembled only.

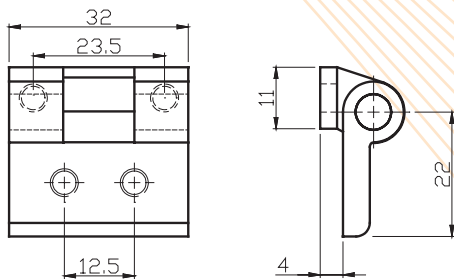
Product codes	Finishes
S0520000001NA	SC



B528 Hinge

Brass hinge for top hung applications. Features security pin.

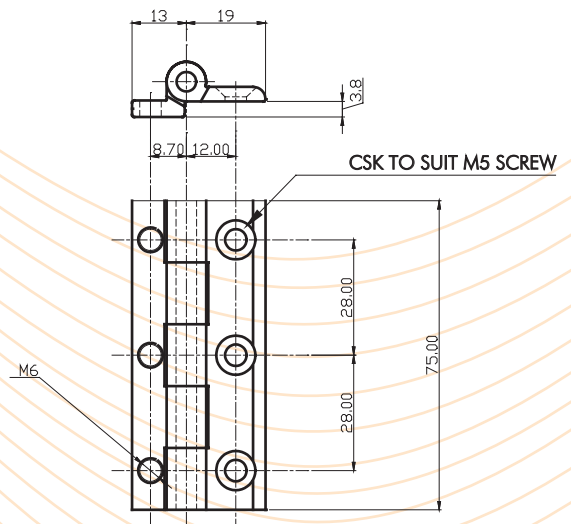
Product codes	Finishes
B0528S01XX	NA; SCP



B532 Hinge

Brass 3" Butt Hinge for top hung and side hung application.

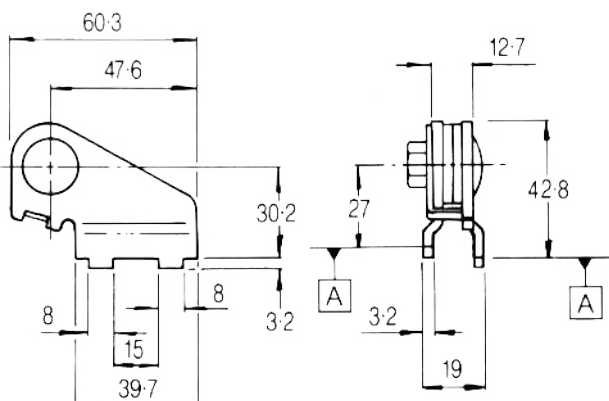
Product codes	Finishes
B05320075XX	NA; SCP



S1027 Friction Hinge

Steel Friction hinge with sheradized steel bolts for standard steel windows. Direct weld to sections. Sold in pairs.

Product codes	Finishes
LS102700000U1NA	NAT

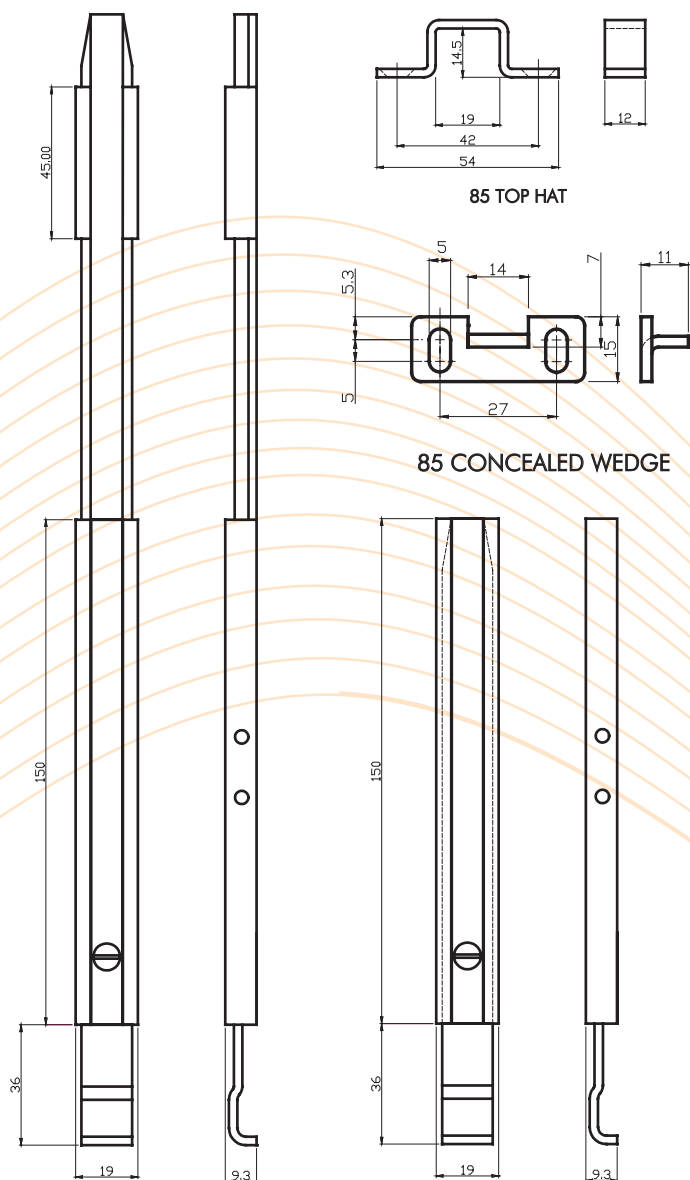


B85C Lock Bolt (Concealed)

Inc Top Hat and Wedge. Fits inside the section for concealed mounting or for use with a face mounted open in door.

Product codes	Standard Sizes	Finishes
B0085C15001RB	150mm	RB
B0085C150001RD	150mm	RTD
B0085C150001SC	150mm	SCP
B0085C300001RB	300mm	RB
B0085C300001RD	300mm	RTD
B0085C300001SC	300mm	SCP
B0085C450001RB	450mm	RB
B0085C450001RD	450mm	RTD
B0085C450001SC	450mm	SCP

This Bolt can be reversed to change from Locking



85C BOLT 300/400mm

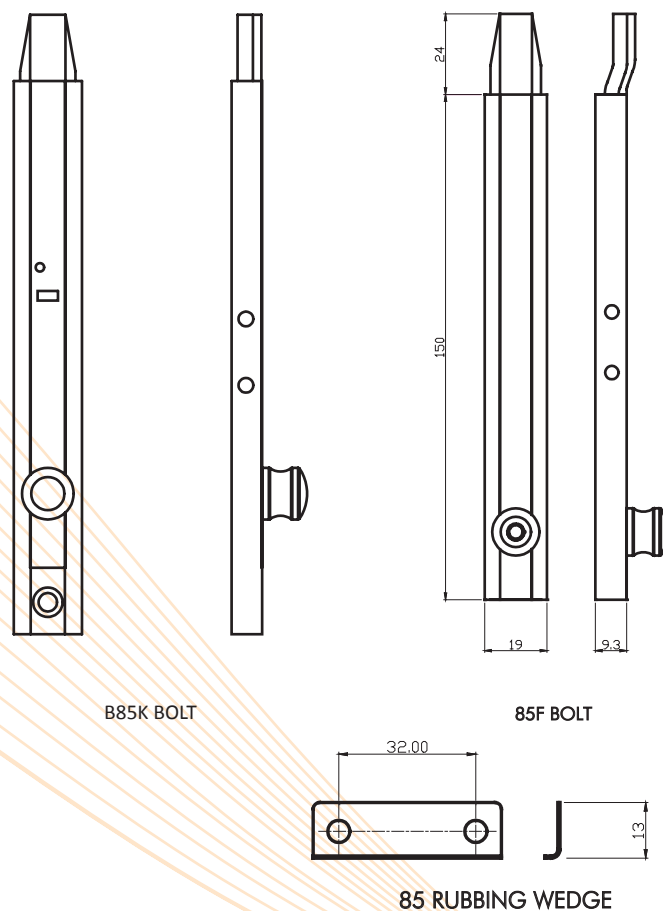
85C BOLT

B85F Lock Bolt Face Fix (Cranked)

Inc Rubbing Wedge. For use in open out applications.

B85F Lock Bolt Face Fix (Cranked)		
Product codes	Standard Sizes	Finishes
B0085F15001RB	150mm	RB
B0085F150001RD	150mm	RTD
B0085F150001SC	150mm	SCP
B0085F300001RB	300mm	RB
B0085F300001RD	300mm	RTD
B0085F300001SC	300mm	SCP
B0085F450001RB	450mm	RB
B0085F450001RD	450mm	RTD
B0085F450001SC	450mm	SCP

B85K Lock Bolt Face Fixed (Straight)	
Product codes	Finishes
B0085K15001xx	RB; RTD; SCP
B0085K30001xx	
B0085K45001xx	



B85K BOLT

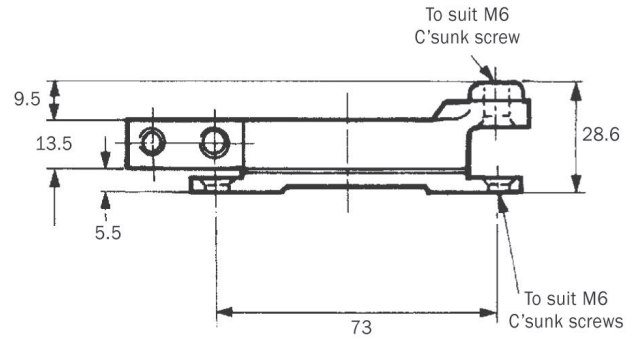
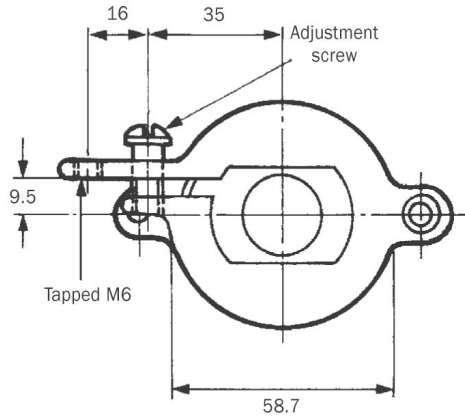
85F BOLT

85 RUBBING WEDGE

B4/2 Friction Pivot

Hot forged brass friction pivot. Clamp screw provides friction adjustment. Please state right or left hand when ordering.

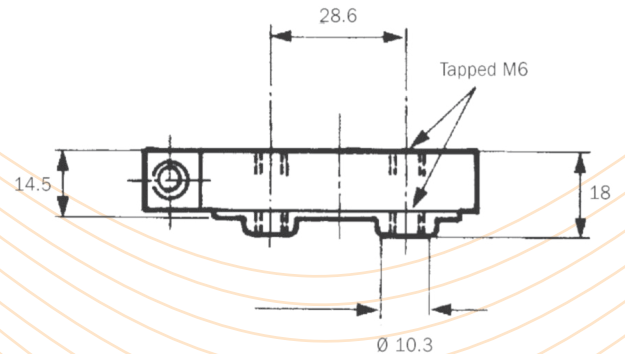
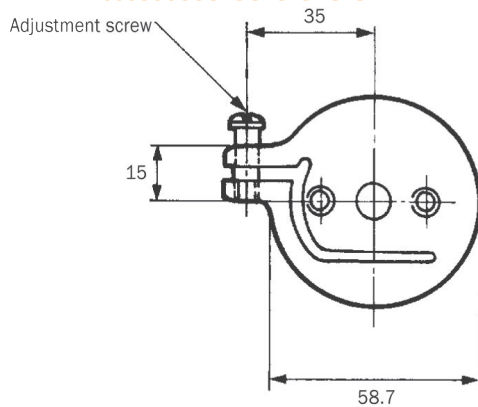
Product codes	Finishes
B000400000L2NA	NAT
B000400000R2NA	NAT



B6/2 Friction Pivot

Hot forged brass friction pivot complete with zinc diecast spacer. Clamp screw provides friction adjustment. Sold in pairs. Fittings for both w20 and w40 sections.

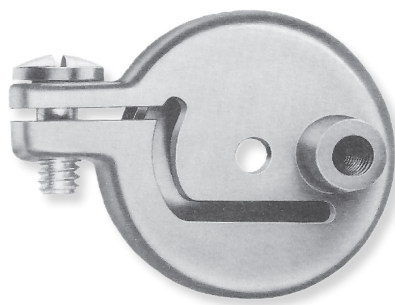
Product codes	Finishes
B000600000P2NA	NAT



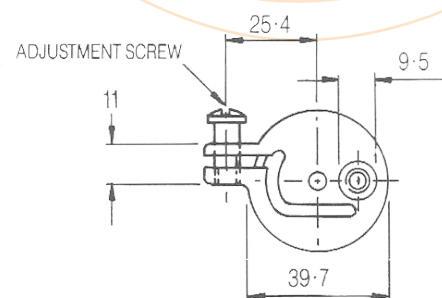
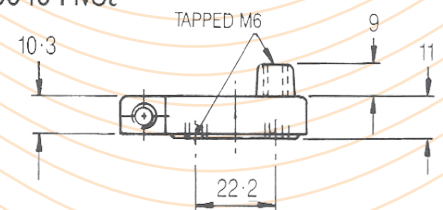
B10/4 Friction Pivot

Hot forged brass friction pivot. Clamp screw provides friction adjustment. Commonly used in 'F' section windows. Please state LH or RH when ordering.

Product codes	Finishes
B001000400L2NA	NAT
B001000400R2NA	NAT



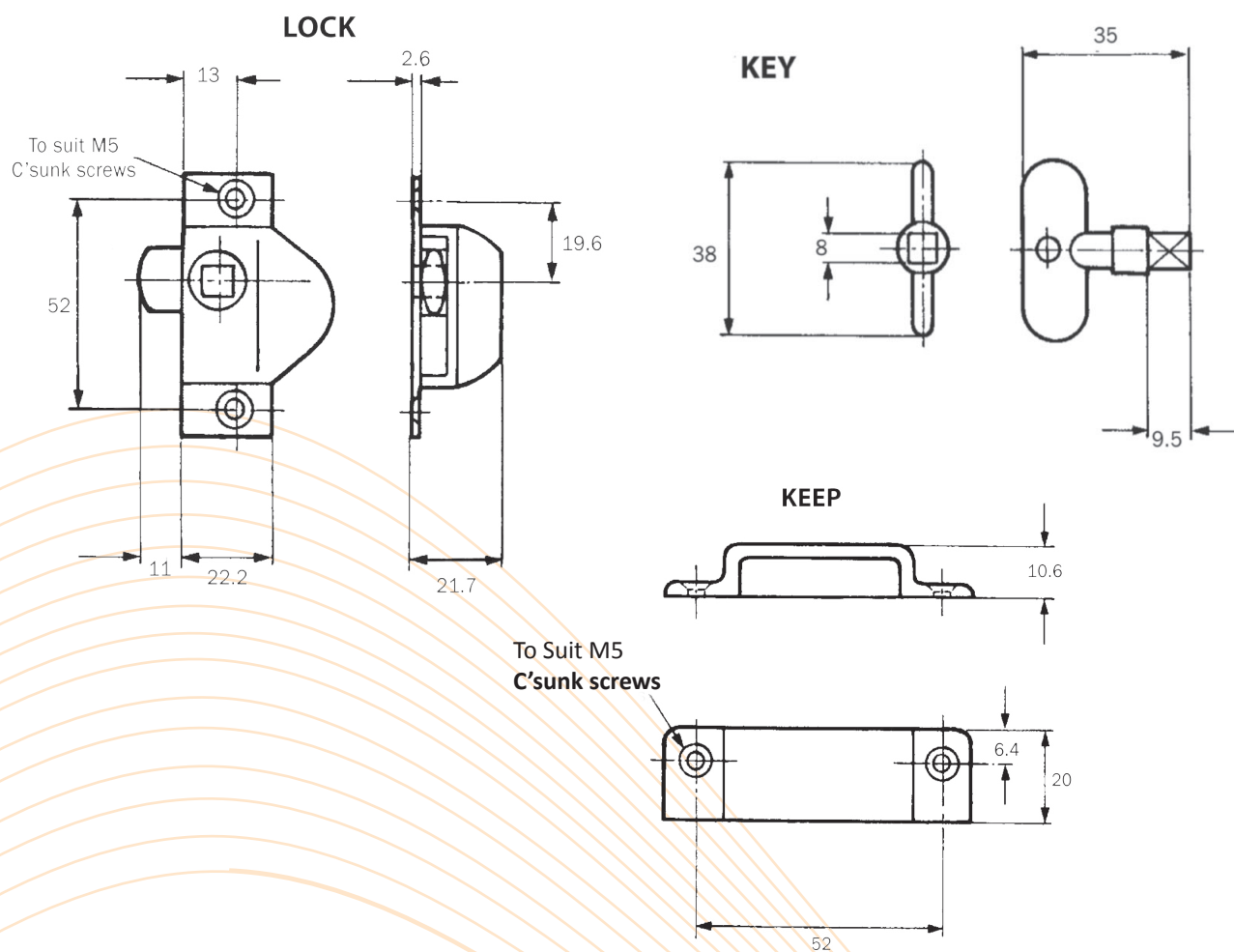
B 0010 0040 Pivot



B805 Carriage Lock, Keep and Keys

Hot forged brass, face fixing lock with finger pull, incorporating 8mm square aperture to receive point of fireman's axe. Keep and key also hot forged brass. Lock available in left and right hand versions.

Product codes	Description	Finishes
B080500000L1XX	805 CARRIAGE LOCK LH	SCP; RTD
B080500000R1XX	805 CARRIAGE LOCK RH	SCP; RTD
B08050000002XX	805 KEY	SCP; RTD
B08050000003XX	805 KEEP	SCP; RTD

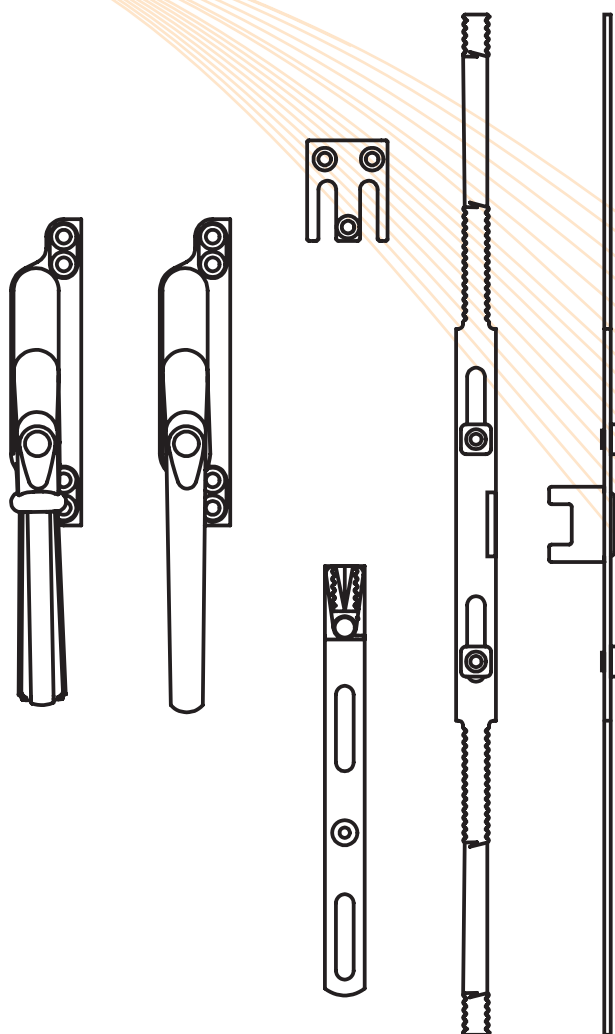


Multipoint Locking System

High security key lockable multipoint system. Awarded Secured By Design (SBD) status on W40 system. Features a night vent system for secure ventilation. A choice of two handle designs:

- Order Left hand or Right hand handle
- Handles, rails, keeps and extension pieces to be ordered separately
- Two extension pieces required per rail
- Number of keeps required depends on rail size (see table). One keep/stud.
- Rails and extension pieces available with extended studs (12mm).
- Centre Rail in conjunction with Extension Piece allows for window size as shown. For example: Window size of 1250 would require centre rail SWMPC1006.

Product codes	Description	Finish
MP2600LHxx	Fluted handle LH	SCP, RTD, WHT, BLK
MP2600RHxx	Fluted handle RH	
MP2700LHxx	Straight Handle LH	
MP2700RHxx	Straight Handle RH	



Product codes	Description	Size	Finish
MPC0406	406mm, 0 stud, 2 retainers	For Windows 600-800mm	Plated
MPC0406/12	406mm, 0 stud, 2 retainers, 12mm stud	For Windows 600-800mm	
MPC0606	606mm, 2 stud, 4 retainers	For Windows 800-1000mm	
MPC0606/12	606mm, 2 stud, 4 retainers, 12mm stud	For Windows 800-1000mm	
MPC0806	806mm, 2 studs, 4 retainers	For Windows 1000-1200mm	
MPC0806/12	806mm, 2 studs, 4 retainers, 12mm stud	For Windows 1000-1200mm	
MPC1006	1006mm, 2 studs, 4 retainers	For Windows 1200-1400mm	
MPC1006/12	1006mm, 2 studs, 4 retainers, 12mm stud	For Windows 1200-1400mm	
MPC1206	1206mm, 2 studs, 4 retainers	For Windows 1400-1600mm	
MPC1206/12	1206mm, 2 studs, 4 retainers, 12mm stud	For Windows 1400-1600mm	
MPC1406	1406mm, 4 studs, 8 retainers	For Windows 1600-1800mm	
MPC1406/12	1406mm, 4 studs, 8 retainers, 12mm stud	For Windows 1600-1800mm	
MPC1606	1606mm, 4 studs, 8 retainers	For Windows 1800-2000mm	
MPC1606/12	1606mm, 4 studs, 8 retainers, 12mm stud	For Windows 1800-2000mm	
MPC1806	1806mm, 4 studs, 8 retainers	For Windows 2000-2200mm	
MPC1806/12	1806mm, 4 studs, 8 retainers, 12mm stud	For Windows 2000-2200mm	
MPC2006	2006mm, 6 studs, 12 retainers	For Windows 2200-2400mm	
MPC2006/12	2006mm, 6 studs, 12 retainers, 12mm stud	For Windows 2200-2400mm	
MPE0150	1 Stud/Ext	Suitable for all sizes. 2 required per rail.	
MPE0150/12	1 Stud/Ext, 12mm stud		
SWMPK015	Keeps die cast 1per Stud	Suitable for both 6mm and 12mm stud.	



IN THE FRAME

For Parts
&
Accessories



Cavendish Hardware

Unit 8, Tithe Street, Leicester LE5 4BN

Tel: Leicester (0116) 274 2195 Fax: (0116) 246 1545

E.mail: sales@cavendish-hardware.co.uk