

CALDWELL

SOLUTIONS THAT SET NEW STANDARDS

CASEMENT HARDWARE FABRICATORS MANUAL

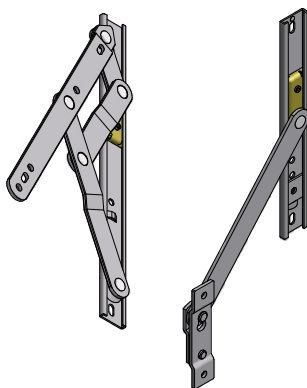
1st Edition

INDEX

Key features	1
Introduction to Caldwell Casement Hardware	2
AMC200 Series Hinge	3
AMC210 Hinge Dimensions	4
AMC216 Hinge Dimensions	5
AMC220 Hinge Dimensions	6
AMC224 Hinge Dimensions	7
AMC210i Hinge with Integrated Restrictor	8
AMC216i Hinge with Integrated Restrictor	9
AMCSG Series	10
AMC224SG Hinge Dimensions	11
AMC228SG Hinge Dimensions	12
AMC4000 Series	13
AMC4010 Hinge Dimensions	14
AMC4012 Hinge Dimensions	15
AMC4000i Hinge Dimensions	16
AMC5000 Series	17
AMC5012 Hinge Dimensions	18
AMC 59-5012 Channel Mounted Euro Hinge	19
AMC5000i Hinge with Integrated Restrictor	20
Friction Adjustable Limit Device (Non-release)	21
Friction Adjustable Limit Device (Key-release)	22
Truth Limit Device	23
Truth Friction Adjustor/Limit Restrictor	24
Truth Key Release Limit Device	25
Truth Ratchet Support Arm	26
900/901 Series Restrictor	27
230 Storm Catch	28
211 Spring Catch	29
Availability	30
Applicable Standards	30
Testing	30
Warranty Details	30
Maintenance	30
Authorities	31

KEY FEATURES

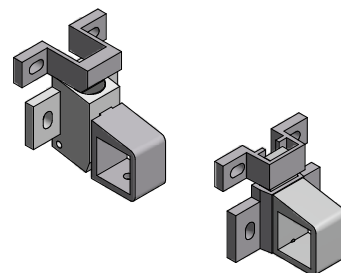
- HIGH QUALITY FRICTION HINGES AND LIMIT DEVICES.
- PATENTED FRICTION HINGES TO EFFECTIVELY IMPROVE WINDOW SEALING.
- VARIOUS PRODUCTS AVAILABLE FOR COMMERCIAL AND DOMESTIC USES.
- PRODUCTS SUITABLE FOR TOP, BOTTOM AND SIDE HUNG VENTS.
- CATCHES FOR SECURELY CLOSING THE VENT.



Cavendish Hardware Ltd,

Unit 8, Tithe Street,
Leicester,
LE5 4BN

Email: Sales@cavendish-hardware.co.uk
Web Site: www.cavendish-hardware.co.uk



CALDWELL

SOLUTIONS THAT SET NEW STANDARDS

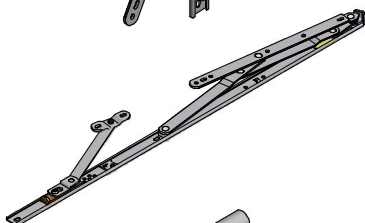
Telephone 024 7643 7900

Introduction to Caldwell Casement Hardware



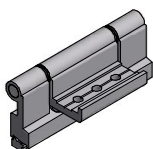
Friction Hinges

High quality Friction Hinges for a range of applications.



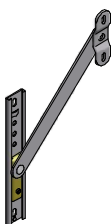
Friction Hinges with integrated Restrictor

High quality Friction Hinges that have a built in Restrictor.



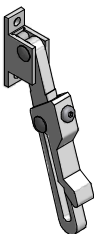
Butt Hinges

Please contact Caldwell for availability.



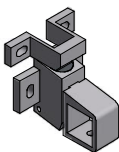
Limit Devices

Bar Restrictor type device for limiting the opening angle of a vent. These are available in releasable and non-releasable forms, for a wide range of applications.



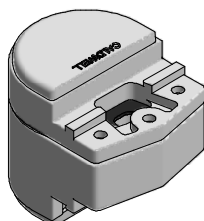
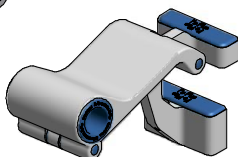
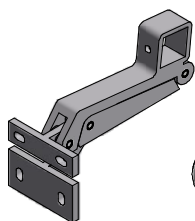
Face fitting Restrictors

The 900 Series Restrictor offers ease of fitting, where in-channel bar type restrictors are not intended to be fitted.



Catches for securing Casement Sashes

The 230 & 211 Catches offer a method of locking the sashes securely.
Note: The vent will need to be on friction stays, or have a limit device in place.



Extra Casement products detailed in other Manuals

There are detailed Manuals available for Folding Openers and Pivot Hardware (please contact Caldwell Technical Department).

- Folding Opener Fabricators Manual: request MAN-0002
- Folding Opener Plus Fabricators Manual: request MAN-0034
- 3000 Pivot Fabricators Manual: request MAN-0029

NOTE: IF YOU REQUIRE CASEMENT HARDWARE NOT SHOWN ABOVE, PLEASE CONTACT CALDWELL, AS THERE MAY BE OTHER PRODUCTS AVAILABLE

All of the information shown on this data sheet was correct at the time of issue. All information however is subject to change and therefore it is advisable to check with Caldwell Hardware to ensure that you have the latest issue level.

CALDWELL

SOLUTIONS THAT SET NEW STANDARDS

Telephone 024 7643 7900

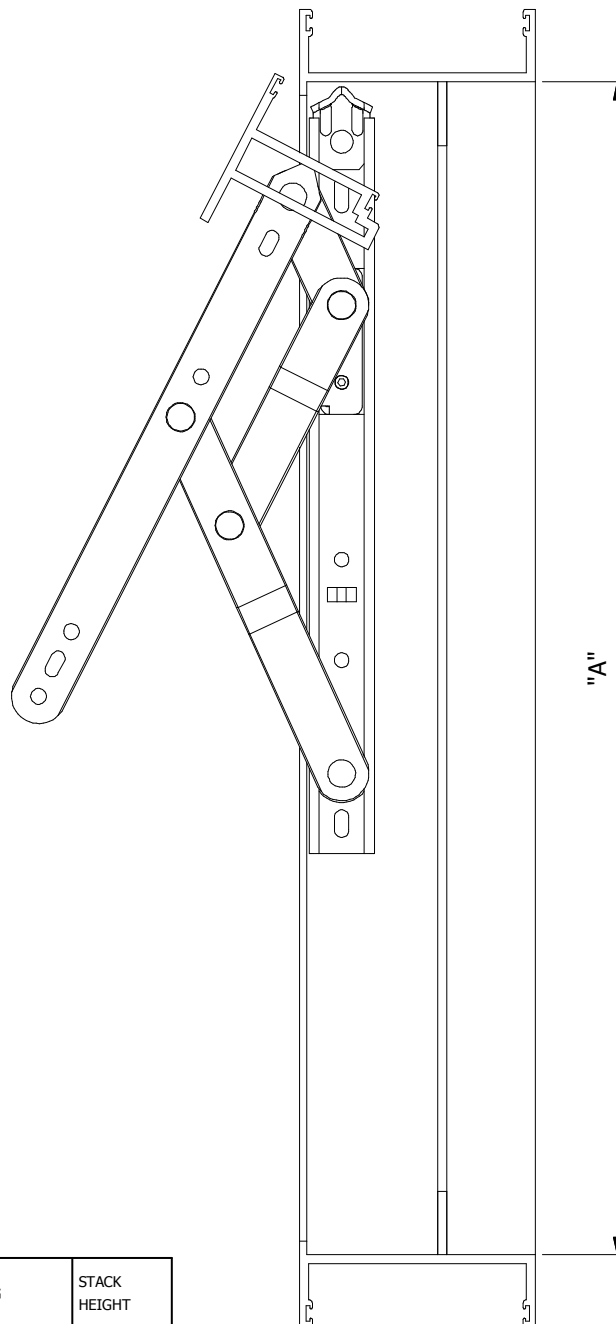
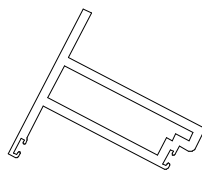
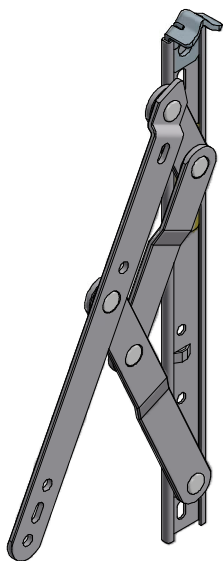
AMC200 SERIES - TOP/BOTTOM HUNG HINGES

AMC 4-BAR CHANNEL MOUNT PROJECTION HINGES

Hinge mounting: The use of M5 (No.10) stainless steel pan head screws are recommended.

Hinge capacity: Vent size and weight should not exceed the stated capacity of the hinge.

Opening angle: For vents used in high winds, requested limited opening (i.e. for child safety), the use of an additional Limit/Friction device may be required (e.g. AMC177 & AMC419).



PART No.	TYPE	SIZE	"A" INSIDE FRAME	MAX VENT WEIGHT	MAX OPENING	STACK HEIGHT
AMC210	Inline	254mm (10")	266.7mm - 711.2mm (10.5" - 28")	38.56kg (85lbs)	60 degrees	15.875mm (0.675")
AMC216	Inline	406.4mm (16")	711.2mm - 1016mm (28" - 40")	56.70kg (125lbs)	49 degrees	15.875mm (0.675")
AMC220	Inline	558.8mm (22")	1016mm - 1270mm (40" - 50")	72.57kg (160lbs)	49 degrees	15.875mm (0.675")
AMC224	Inline	609.6mm (24")	1016mm - 1524mm (40" - 60")	81.65kg (180lbs)	30 degrees (45 degrees with stop removed)	15.875mm (0.675")

NOTE: DO NOT SCALE

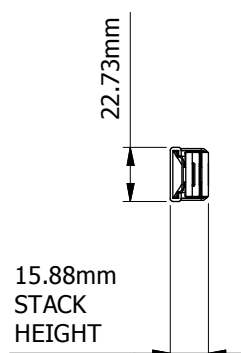
All of the information shown on this data sheet was correct at the time of issue. All information however is subject to change and therefore it is advisable to check with Caldwell Hardware to ensure that you have the latest issue level.



SOLUTIONS THAT SET NEW STANDARDS

Telephone 024 7643 7900

AMC210 PROJECTION INLINE 4-BAR HINGE



INFORMATION

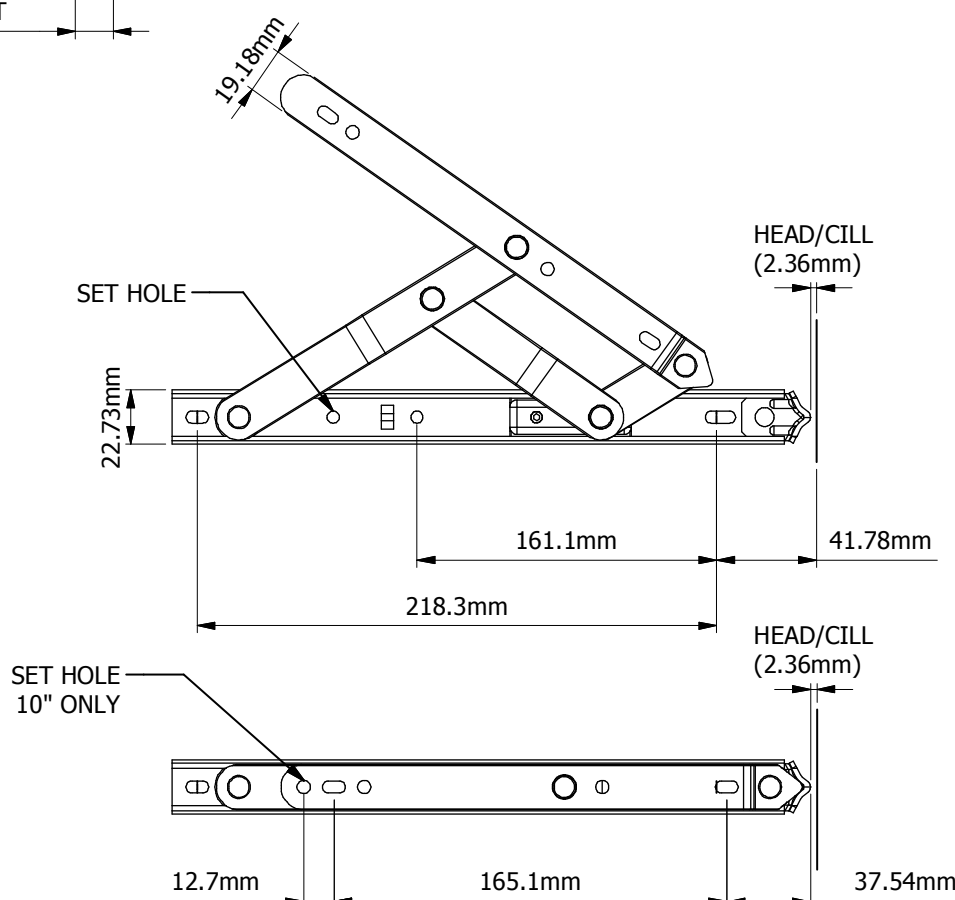
PROJECTION: INLINE

VENT HEIGHT: 266.7mm (10.5") TO 711.2mm (28")

VENT WEIGHT: 38.56kg (85lbs) MAX.

MAX OPENING: 60°

MOUNT USING NO.10 OR M5 SS PAN HEAD SCREWS



NOTE: DO NOT SCALE

All of the information shown on this data sheet was correct at the time of issue. All information however is subject to change and therefore it is advisable to check with Caldwell Hardware to ensure that you have the latest issue level.



SOLUTIONS THAT SET NEW STANDARDS

Telephone 024 7643 7900

AMC216 PROJECTION INLINE 4-BAR HINGE

INFORMATION

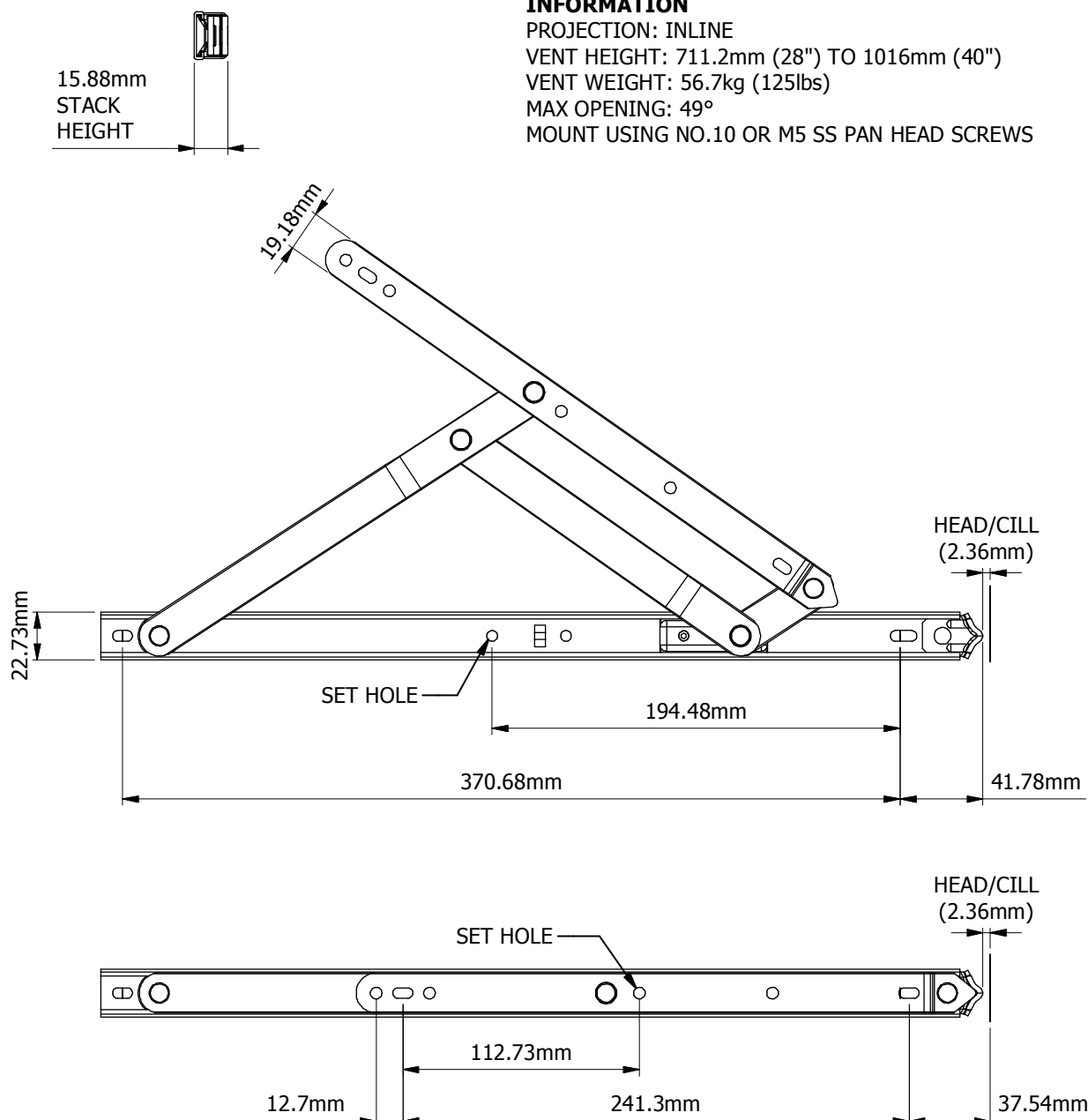
PROJECTION: INLINE

VENT HEIGHT: 711.2mm (28") TO 1016mm (40")

VENT WEIGHT: 56.7kg (125lbs)

MAX OPENING: 49°

MOUNT USING NO.10 OR M5 SS PAN HEAD SCREWS



NOTE: DO NOT SCALE

All of the information shown on this data sheet was correct at the time of issue. All information however is subject to change and therefore it is advisable to check with Caldwell Hardware to ensure that you have the latest issue level.

CALDWELL

SOLUTIONS THAT SET NEW STANDARDS

Telephone 024 7643 7900

AMC220 PROJECTION INLINE 4-BAR HINGE

INFORMATION

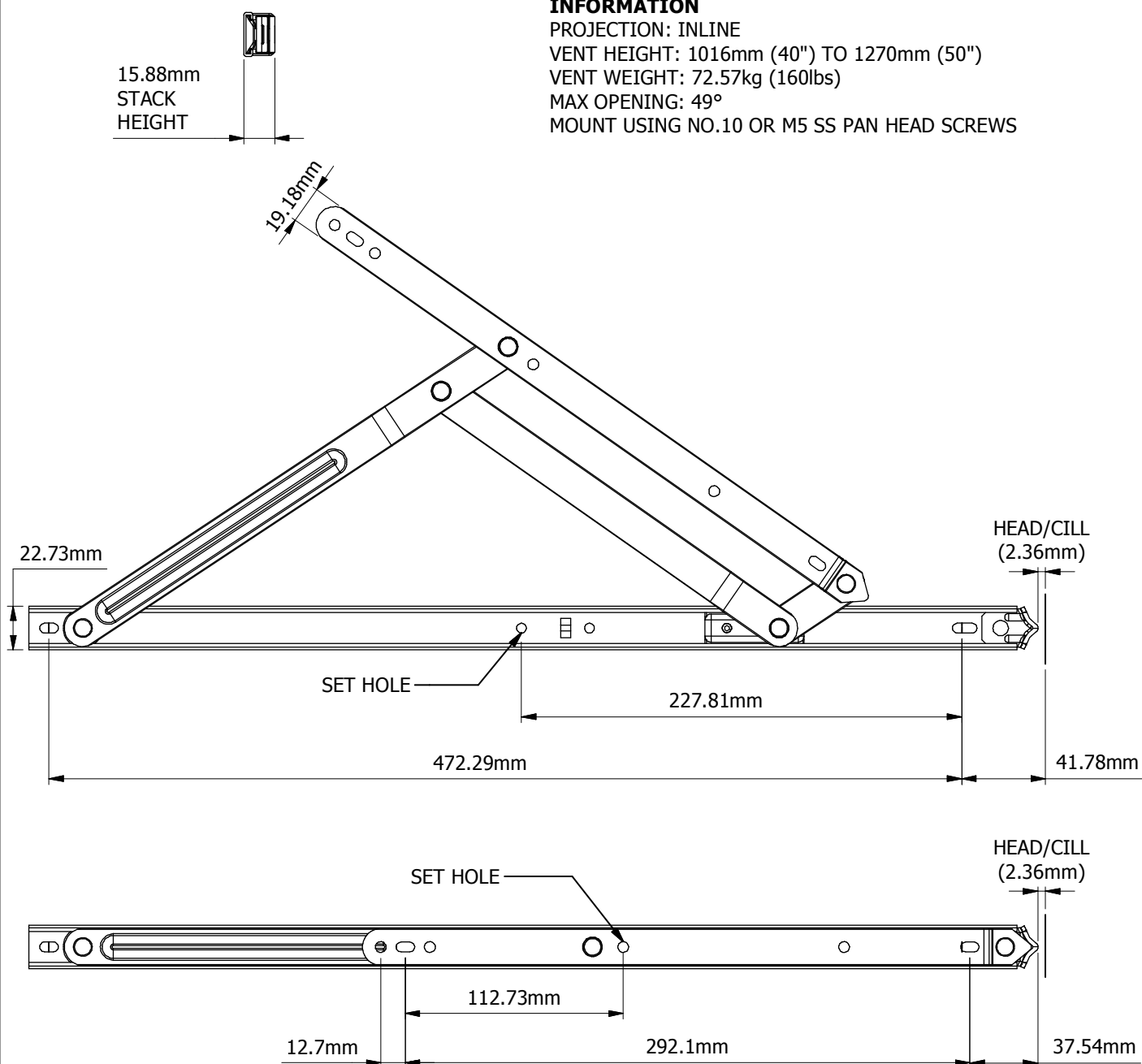
PROJECTION: INLINE

VENT HEIGHT: 1016mm (40") TO 1270mm (50")

VENT WEIGHT: 72.57kg (160lbs)

MAX OPENING: 49°

MOUNT USING NO.10 OR M5 SS PAN HEAD SCREWS



NOTE: DO NOT SCALE

All of the information shown on this data sheet was correct at the time of issue. All information however is subject to change and therefore it is advisable to check with Caldwell Hardware to ensure that you have the latest issue level.

CALDWELL

SOLUTIONS THAT SET NEW STANDARDS

Telephone 024 7643 7900

AMC224 PROJECTION INLINE 4-BAR HINGE

INFORMATION

PROJECTION: INLINE

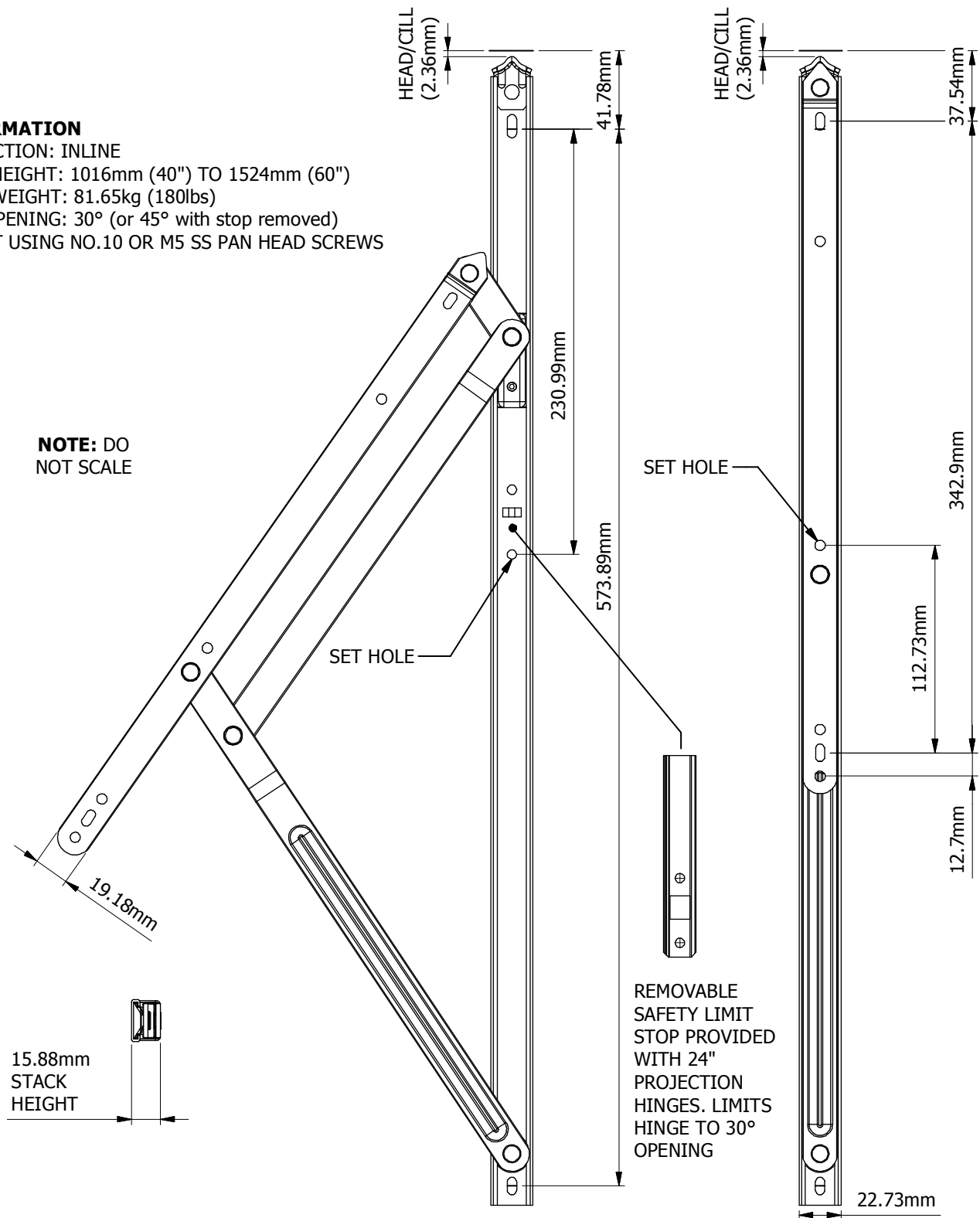
VENT HEIGHT: 1016mm (40") TO 1524mm (60")

VENT WEIGHT: 81.65kg (180lbs)

MAX OPENING: 30° (or 45° with stop removed)

MOUNT USING NO.10 OR M5 SS PAN HEAD SCREWS

NOTE: DO
NOT SCALE



All of the information shown on this data sheet was correct at the time of issue. All information however is subject to change and therefore it is advisable to check with Caldwell Hardware to ensure that you have the latest issue level.

DATASHT-00715

ISSUE LEVEL 02

CALDWELL

SOLUTIONS THAT SET NEW STANDARDS

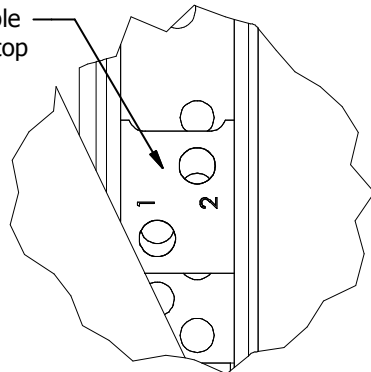
Telephone 024 7643 7900

AMC210i HINGE WITH INTEGRATED RESTRICTOR

AMC210i INTEGRATED 4-BAR CHANNEL
MOUNT PROJECTION HINGE. FOR
TOP/BOTTOM HUNG CASEMENTS.

B (1 : 1)

Adjustable
Limit Stop



Hinge mounting: The use of
M5 (No.10) stainless steel
pan head screws are
recommended.

Hinge capacity: Vent size
and weight should not
exceed the stated capacity
of the hinge.

Sliding
Arm Bracket

Security screw
releases limit
device (AMC499
key required to
operate)

22°
Max opening

Adjust opening
by positioning
the limit stop



"A"

140.3

B

PART No.	TYPE	SIZE	"A" INSIDE FRAME	MAX VENT WEIGHT	MAX OPENING	STACK HEIGHT
AMC210i	Inline	254mm (10")	411mm - 584mm (16.2" - 23")	40kg (80lbs)	22 degrees	15.875mm (0.625")

**NOTE: DO
NOT SCALE**

All of the information shown on this data sheet was correct at the time of issue.
All information however is subject to change and therefore it is advisable to check
with Caldwell Hardware to ensure that you have the latest issue level.

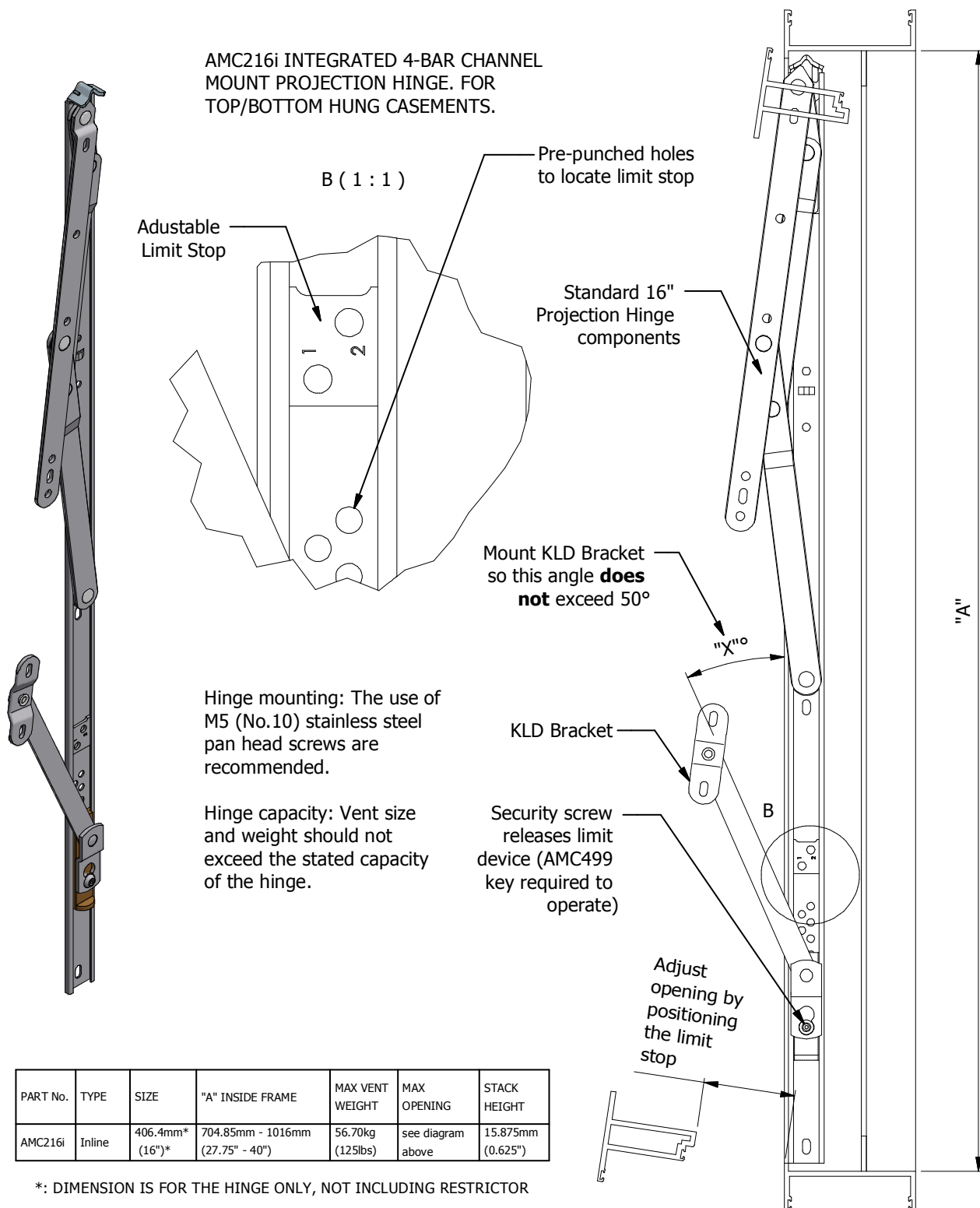
CALDWELL

SOLUTIONS THAT SET NEW STANDARDS

Telephone 024 7643 7900

AMC216i HINGE WITH INTEGRATED RESTRICTOR

AMC216i INTEGRATED 4-BAR CHANNEL
MOUNT PROJECTION HINGE. FOR
TOP/BOTTOM HUNG CASEMENTS.



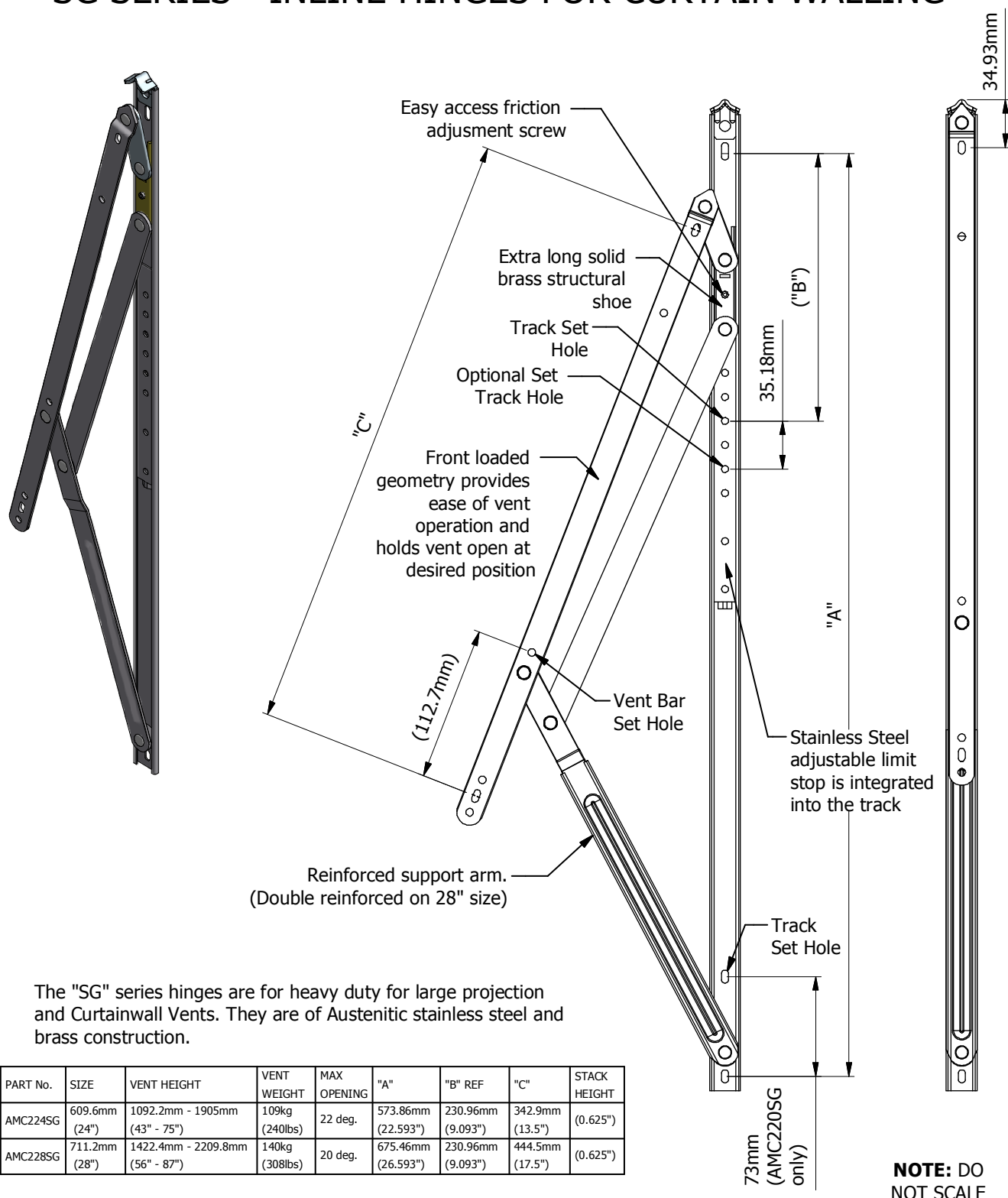
All of the information shown on this data sheet was correct at the time of issue.
All information however is subject to change and therefore it is advisable to check
with Caldwell Hardware to ensure that you have the latest issue level.

CALDWELL

SOLUTIONS THAT SET NEW STANDARDS

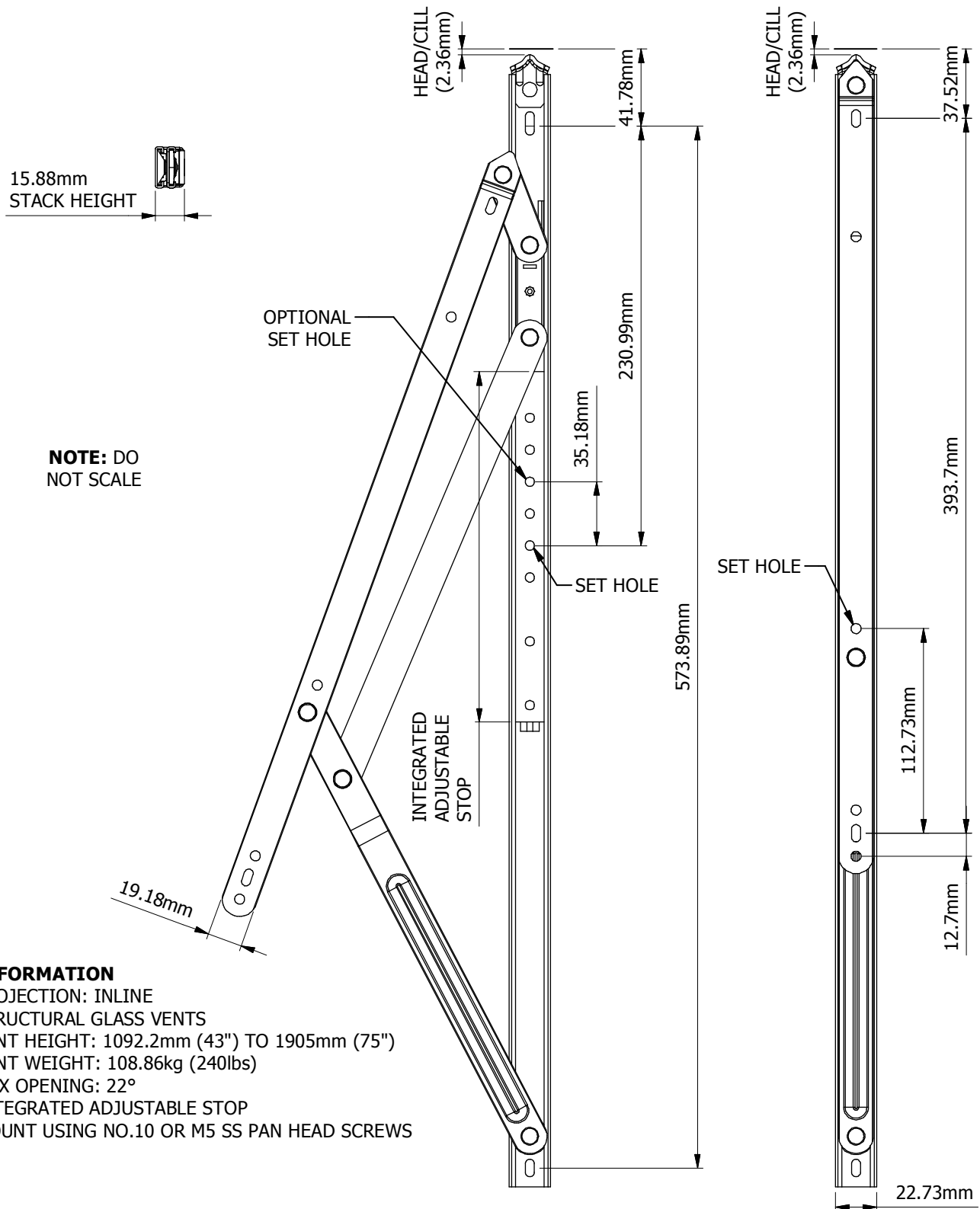
Telephone 024 7643 7900

SG SERIES - INLINE HINGES FOR CURTAIN WALLING



All of the information shown on this data sheet was correct at the time of issue. All information however is subject to change and therefore it is advisable to check with Caldwell Hardware to ensure that you have the latest issue level.

AMC224SG PROJECTION INLINE HINGE FOR CURTAIN WALLING



INFORMATION

PROJECTION: INLINE
STRUCTURAL GLASS VENTS
VENT HEIGHT: 1092.2mm (43") TO 1905mm (75")
VENT WEIGHT: 108.86kg (240lbs)
MAX OPENING: 22°
INTEGRATED ADJUSTABLE STOP
MOUNT USING NO.10 OR M5 SS PAN HEAD SCREWS

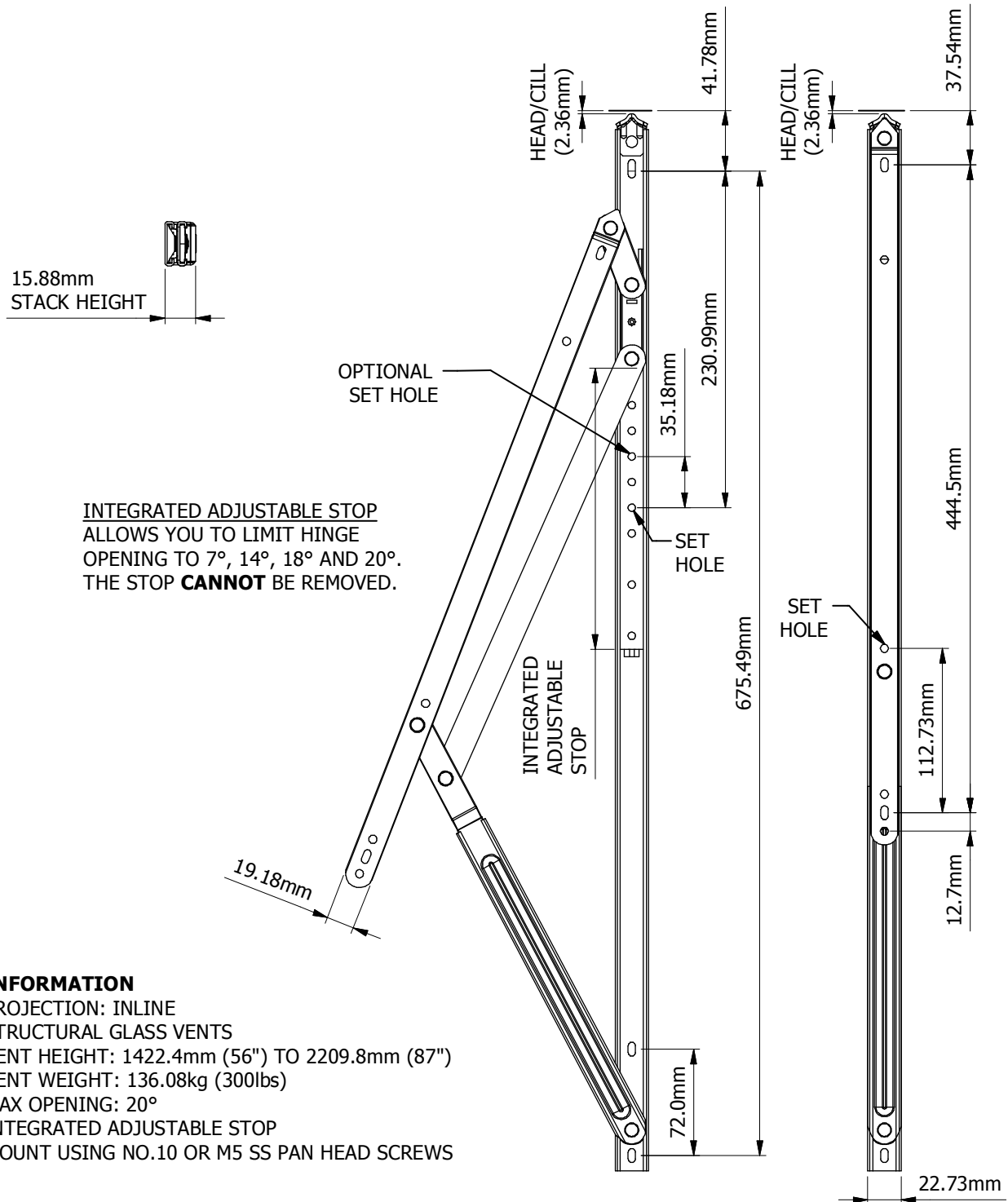
All of the information shown on this data sheet was correct at the time of issue.
All information however is subject to change and therefore it is advisable to check
with Caldwell Hardware to ensure that you have the latest issue level.

CALDWELL

SOLUTIONS THAT SET NEW STANDARDS

Telephone 024 7643 7900

AMC228SG PROJECTION INLINE HINGE FOR CURTAIN WALLING



INFORMATION

PROJECTION: INLINE

STRUCTURAL GLASS VENTS

VENT HEIGHT: 1422.4mm (56") TO 2209.8mm (87")

VENT WEIGHT: 136.08kg (300lbs)

MAX OPENING: 20°

INTEGRATED ADJUSTABLE STOP

MOUNT USING NO.10 OR M5 SS PAN HEAD SCREWS

All of the information shown on this data sheet was correct at the time of issue.
All information however is subject to change and therefore it is advisable to check
with Caldwell Hardware to ensure that you have the latest issue level.

CALDWELL

SOLUTIONS THAT SET NEW STANDARDS

Telephone 024 7643 7900

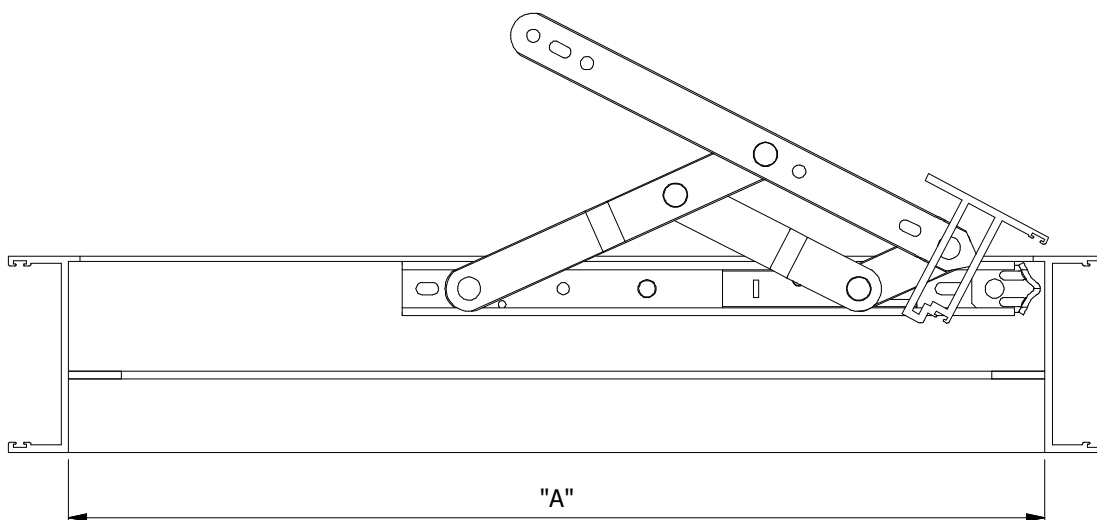
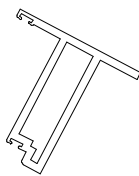
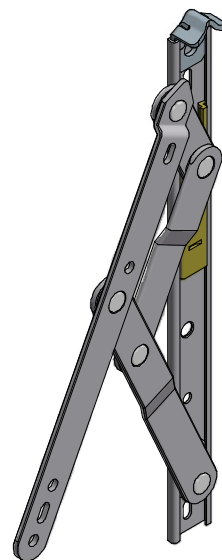
AMC4000 SERIES - SIDE HUNG VENT HINGES

AMC4000 4-BAR CHANNEL MOUNT PROJECTION HINGE. FOR SIDE HUNG CASEMENTS.

Hinge mounting: The use of M5 (No.10) stainless steel pan head screws are recommended.

Hinge capacity: Vent size and weight should not exceed the stated capacity of the hinge.

Opening angle: For vents in high winds, severely limited opening or limited for safety, the use of additional limit/friction devices may be required (e.g. AMC177, AMC419).



PART No.	TYPE	SIZE	"A" INSIDE FRAME	MAX VENT WEIGHT	MAX OPENING	STACK HEIGHT
AMC4010	Inline	254mm (10")	279.4 - 660.4mm (11" - 26")	34.47kg (76lbs)	75 degrees	15.875mm (0.625")
AMC4012	Inline	304.8 (12")	508mm - 838.2mm (20" - 33")	52.16kg (115lbs)	80 degrees (without stop)	15.875mm (0.625")

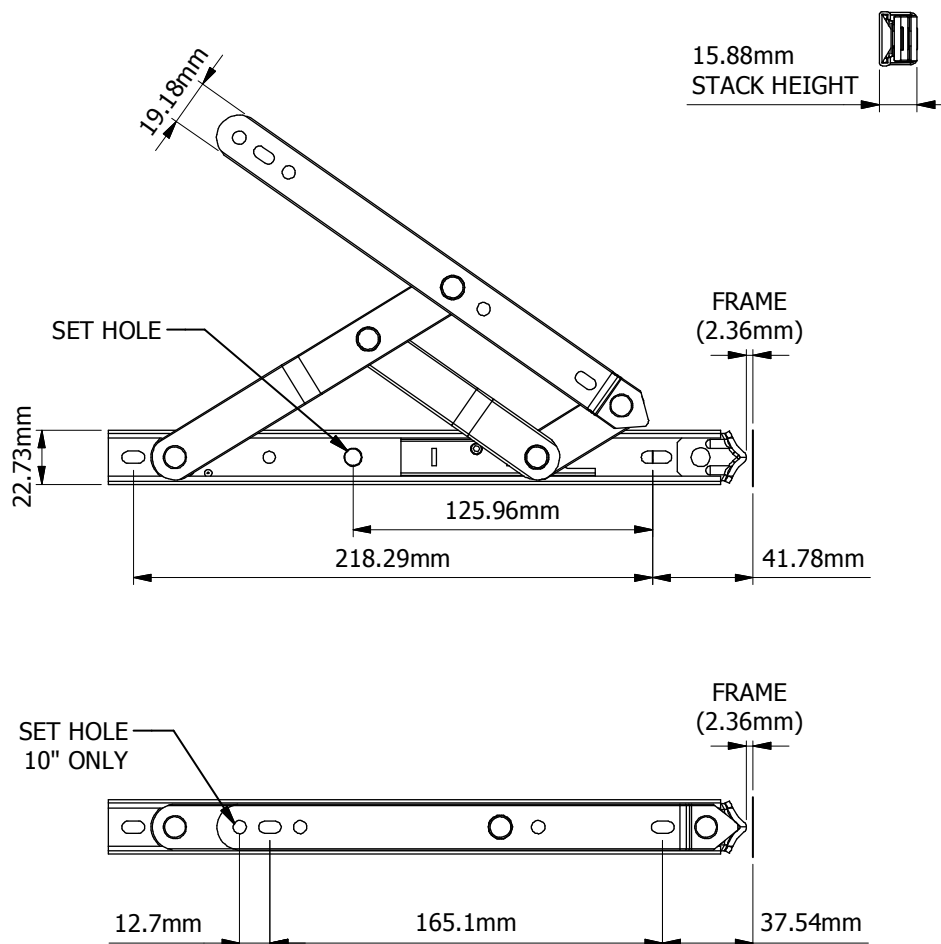
All of the information shown on this data sheet was correct at the time of issue. All information however is subject to change and therefore it is advisable to check with Caldwell Hardware to ensure that you have the latest issue level.



SOLUTIONS THAT SET NEW STANDARDS

Telephone 024 7643 7900

AMC4010 PROJECTION INLINE HINGE



INFORMATION

PROJECTION: INLINE

VENT WIDTH: 279.4mm (11") TO 660.4mm (26")

VENT WEIGHT: 34.47kg (76lbs)

ROTATIONAL LOAD: 16.33kg (36lbs)

MAX OPENING: 70°

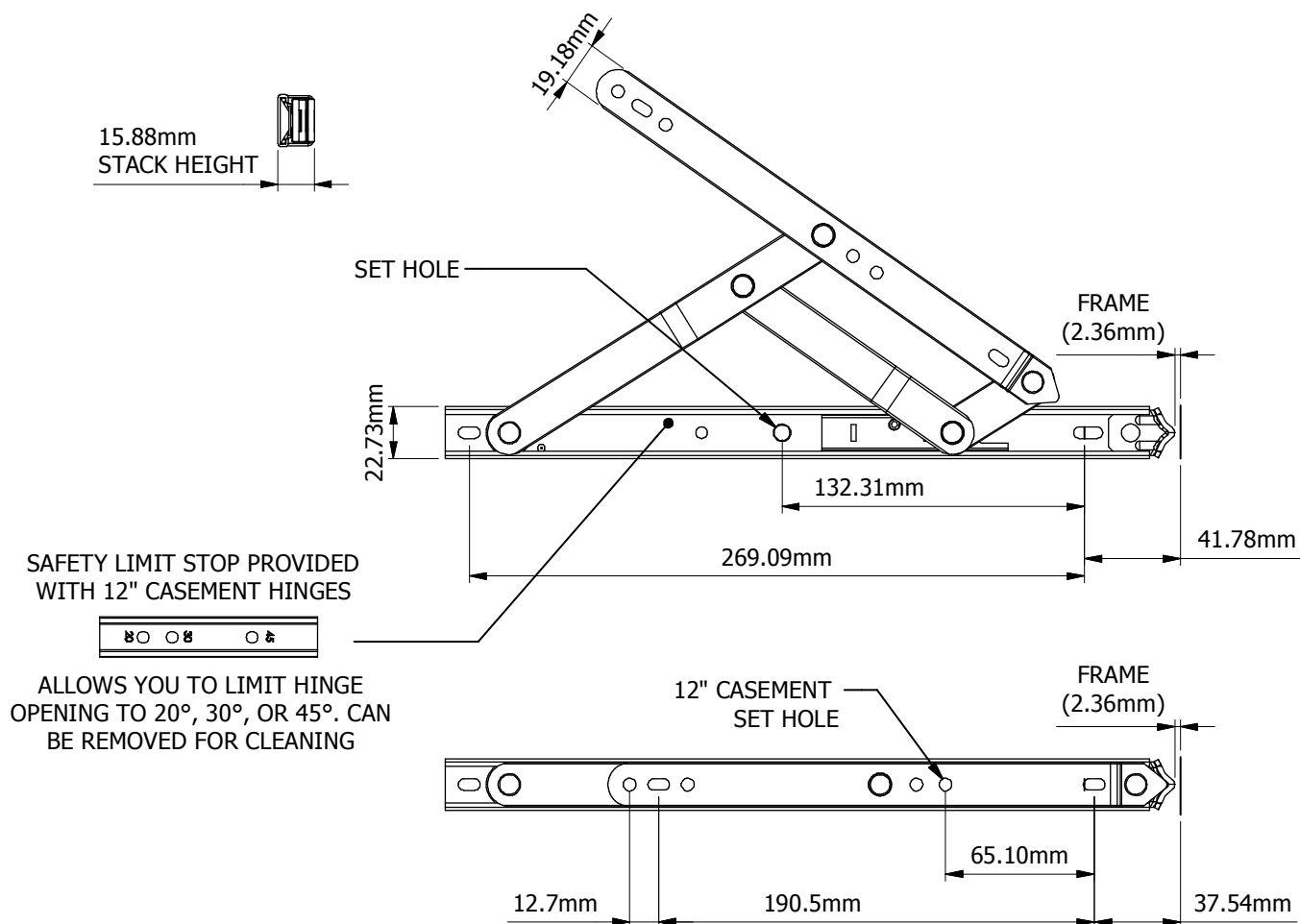
MOUNT USING NO.10 OR M5 SS PAN HEAD SCREWS

NOTE: DO NOT SCALE

All of the information shown on this data sheet was correct at the time of issue. All information however is subject to change and therefore it is advisable to check with Caldwell Hardware to ensure that you have the latest issue level.

Telephone 024 7643 7900

AMC4012 PROJECTION INLINE HINGE



INFORMATION

PROJECTION: INLINE

VENT WIDTH: 508mm (20") TO 838.2mm (33")

VENT WEIGHT: 52.16kg (115lbs)

ROTATIONAL LOAD: 16.33kg (36lbs)

MAX OPENING: 80° (without stop)

MOUNT USING NO.10 OR M5 SS PAN HEAD SCREWS

NOTE: DO NOT SCALE

All of the information shown on this data sheet was correct at the time of issue. All information however is subject to change and therefore it is advisable to check with Caldwell Hardware to ensure that you have the latest issue level.

Telephone 024 7643 7900

AMC4000i SERIES HINGES WITH INTEGRATED RESTRICTOR

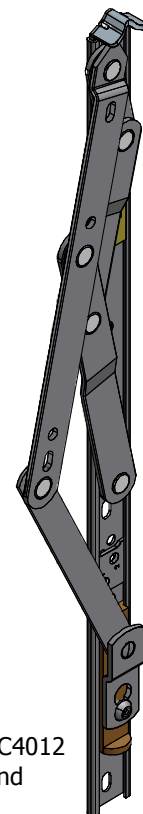
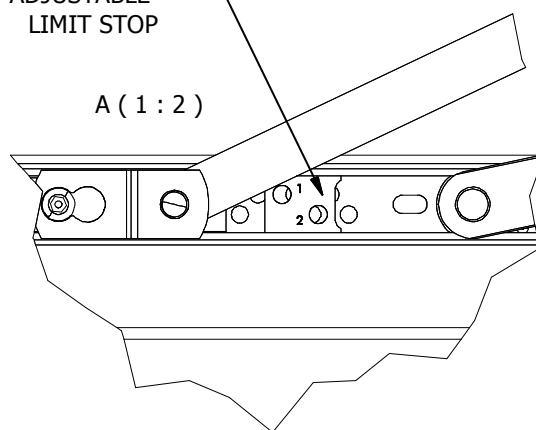
AMC4000i SERIES 4-BAR
CHANNEL MOUNT
PROJECTION HINGE WITH AN
INTEGRATED RESTRICTOR.
FOR SIDE HUNG CASEMENTS.

Hinge mounting: The use of
M5 (No.10) stainless steel pan
head screws are
recommended.

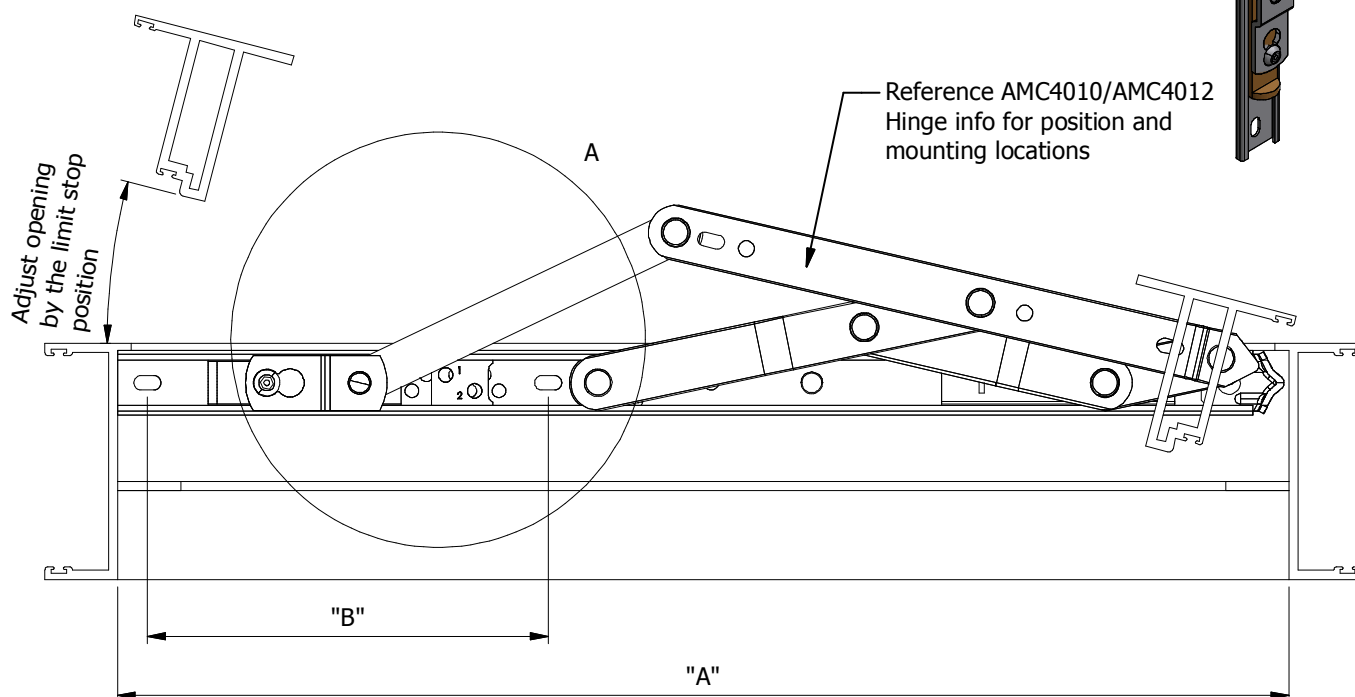
Hinge capacity: Vent size and
weight should not exceed the
stated capacity of the hinge.

ADJUSTABLE
LIMIT STOP

A (1 : 2)



Reference AMC4010/AMC4012
Hinge info for position and
mounting locations



PART No.	Type	Size	"A" Inside Frame	Vent Weight	Max Opening	"B"
AMC4010i	Inline	254mm (10")	411mm - 584mm (16.2" - 23")	34.4kg (76lbs)	22 degrees	140mm (5.525")
AMC4012i	Inline	305mm (12")	508mm - 1016mm (20" - 27")	52.1kg (115lbs)	30 degrees	168mm (6.625")

**NOTE: DO
NOT SCALE**

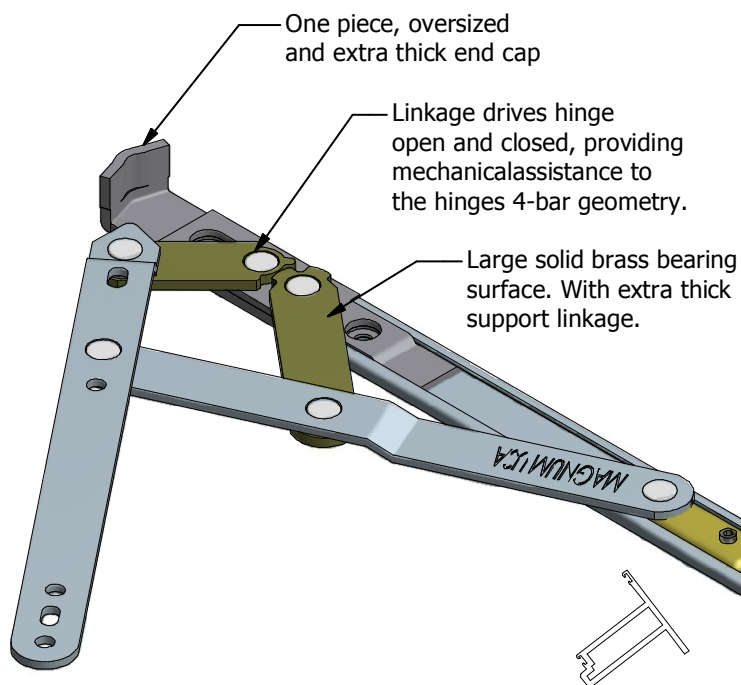
All of the information shown on this data sheet was correct at the time of issue.
All information however is subject to change and therefore it is advisable to check
with Caldwell Hardware to ensure that you have the latest issue level.

CALDWELL

SOLUTIONS THAT SET NEW STANDARDS

Telephone 024 7643 7900

AMC5000 SERIES - SIDE HUNG VENT HINGES



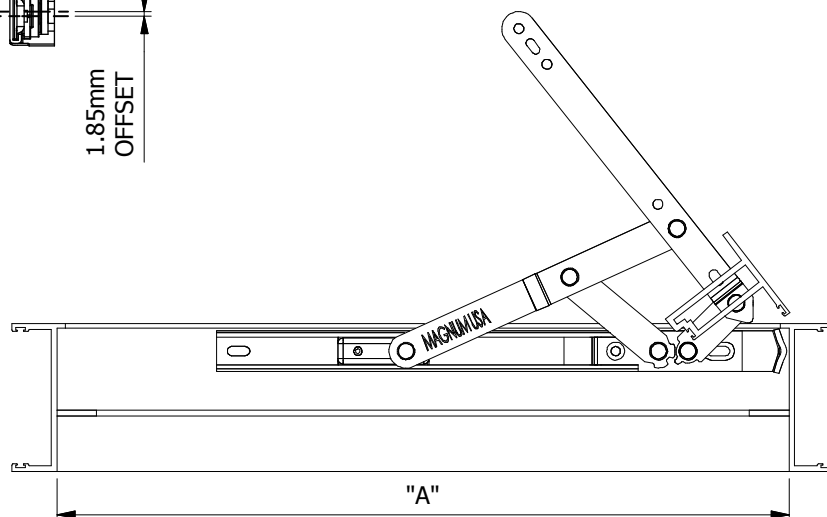
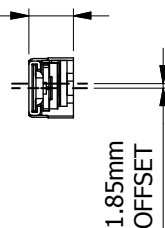
The AMC5012 hinge is intended to provide a 90° opening. The hinge is not handed.

Hinge mounting: The use of M5 (No.10) stainless steel pan head screws are recommended.

Hinge capacity: Vent size and weight should not exceed the stated capacity of the hinge.

Opening angle: For vents in high winds, severely limited opening or limited for safety, the use of additional limit/friction devices may be required (e.g. AMC177, AMC419).

15.88mm
STACK HEIGHT



PART No.	TYPE	SIZE	"A" INSIDE FRAME	MAX VENT WEIGHT	MAX OPENING	STACK HEIGHT
AMC5012	Offset	304.8mm (12")	330.2mm - 914.4mm (13" - 36")	72.6kg (160lbs)	90 degrees	15.875mm (0.625")

NOTE: DO NOT SCALE

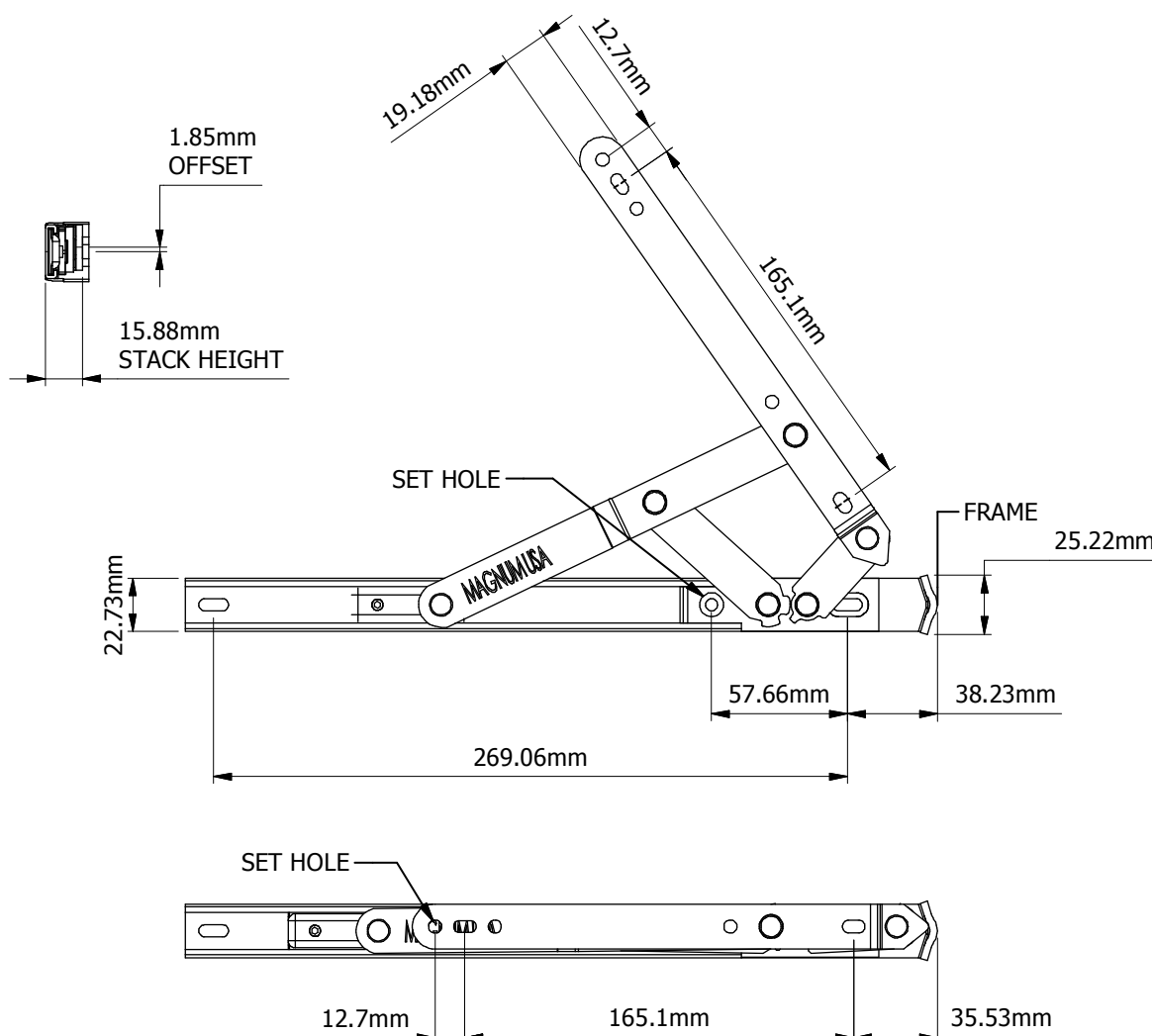
All of the information shown on this data sheet was correct at the time of issue. All information however is subject to change and therefore it is advisable to check with Caldwell Hardware to ensure that you have the latest issue level.



SOLUTIONS THAT SET NEW STANDARDS

Telephone 024 7643 7900

AMC5012 PROJECTION OFFSET EGRESS HINGE



INFORMATION

PROJECTION: OFFSET

VENT WIDTH: 914.4mm (36" max)

VENT WEIGHT: 72.57kg (160lbs)

ROTATIONAL LOAD: 22.68kg (50lbs)

MAX OPENING: 90°

MOUNT USING NO.10 OR M5 SS PAN HEAD SCREWS

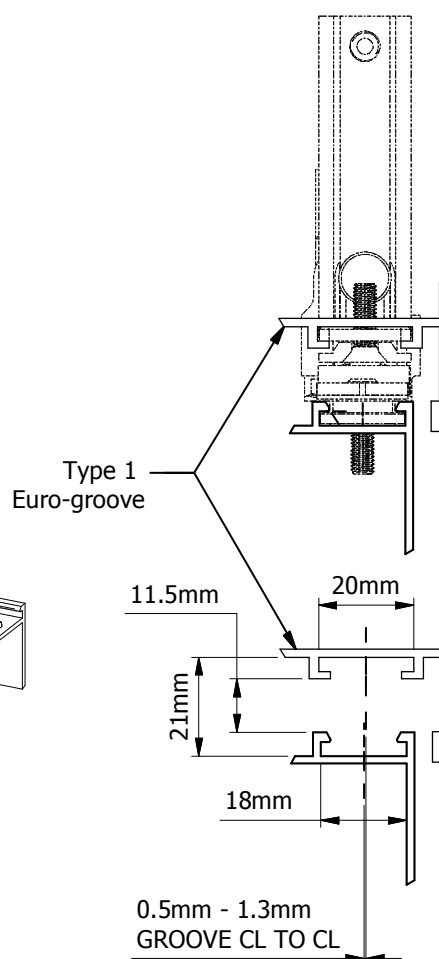
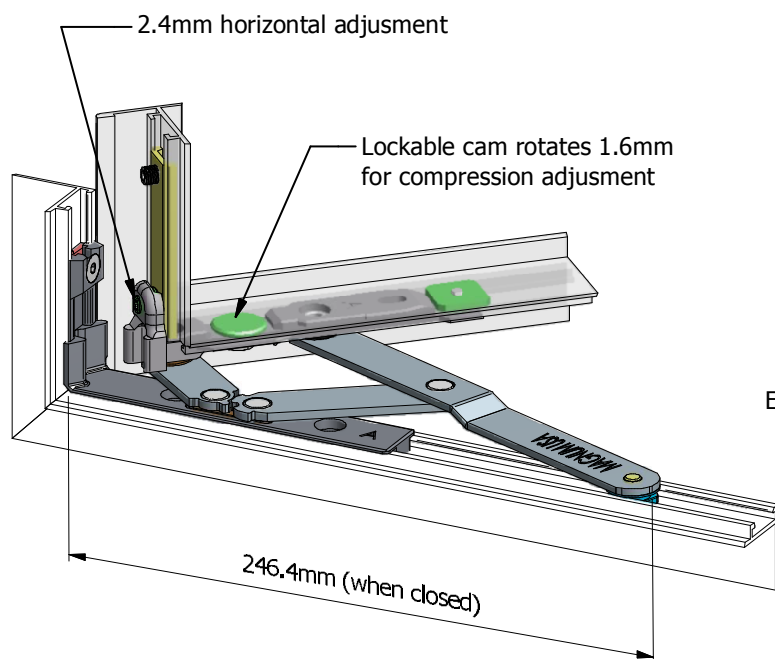
NOTE: DO NOT SCALE

All of the information shown on this data sheet was correct at the time of issue. All information however is subject to change and therefore it is advisable to check with Caldwell Hardware to ensure that you have the latest issue level.

Telephone 024 7643 7900

AMC59-5012 CHANNEL MOUNTED CASEMENT EURO HINGE

- "Dual Cam" provides positive vent engagement and compression.
- Allows 90° maximum opening.
- All stainless steel structural components.
- Brass bushings in high load locations.
- Fits Type 1 Euro-groove for inwards and outwards opening casements.
- 1.6mm compression adjustment.
- 2.4mm horizontal adjustment.
- Attaches to window with the included clamps. Use M5/No.10 screws for fixing(not supplied).
- For all provided hardware, use a 1/8" A/F Allen key.
- Hinges are handed, sold as a pair with "A" & "B" hinges ("A" shown here).



NOTE: DO NOT SCALE

PART No.	TYPE	"A" INSIDE FRAME	MAX VENT WEIGHT	MAX OPENING
AMC59-5012	Offset	1219.2mm MAX (48")	81.65kg (180lbs)	90 degrees

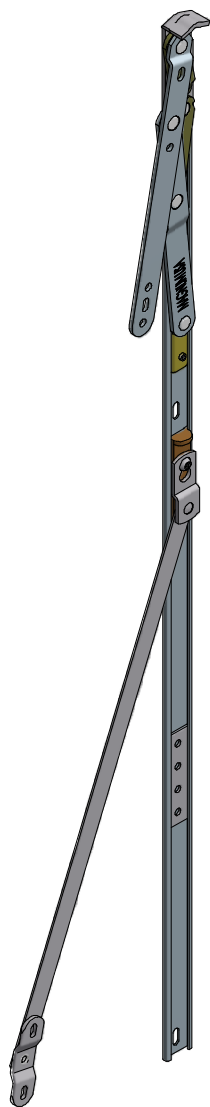
All of the information shown on this data sheet was correct at the time of issue. All information however is subject to change and therefore it is advisable to check with Caldwell Hardware to ensure that you have the latest issue level.

CALDWELL

SOLUTIONS THAT SET NEW STANDARDS

Telephone 024 7643 7900

AMC5000i SERIES - HINGES WITH INTEGRATED RESTRICTOR



AMC512i INTEGRATED 4-BAR
CHANNEL MOUNT
PROJECTION HINGE. FOR
SIDE HUNG CASEMENTS.

Hinge mounting: The use of
M5 (No.10) stainless steel pan
head screws are
recommended. Suitable fixings
are required to prevent
head/cill rotation due to the
high loads.

Hinge capacity: Vent size and
weight should not exceed the
stated capacity of the hinge.

Standard AMC5012
Casement Hinge
components

Security screw
releases limit
device (AMC499
key required to
operate)

Sliding limit
arm bracket

AMC5012i-15 model shown.
Please note that on the
AMC5012ir-8 model, this arm
would point to the opposite
direction.

Max. Angle
50°

"A"

PART No.	TYPE	HINGE SIZE	"A" INSIDE FRAME	MAX VENT WEIGHT	MAX ROTATIONAL LOAD	MAX OPENING	STACK HEIGHT
AMC5012i-15	Offset	304.8mm (12")	838.2mm - 1219.2mm (33" - 48")	72.57kg (160lbs)	22.68kg (50lbs)	50 degrees	15.875mm (0.625")
AMC5012ir-8	Offset	304.8mm (12")	609.6mm - 914.4mm (24" - 36")	72.57kg (160lbs)	22.68kg (50lbs)	50 degrees	15.875mm (0.625")

NOTE: DO NOT SCALE

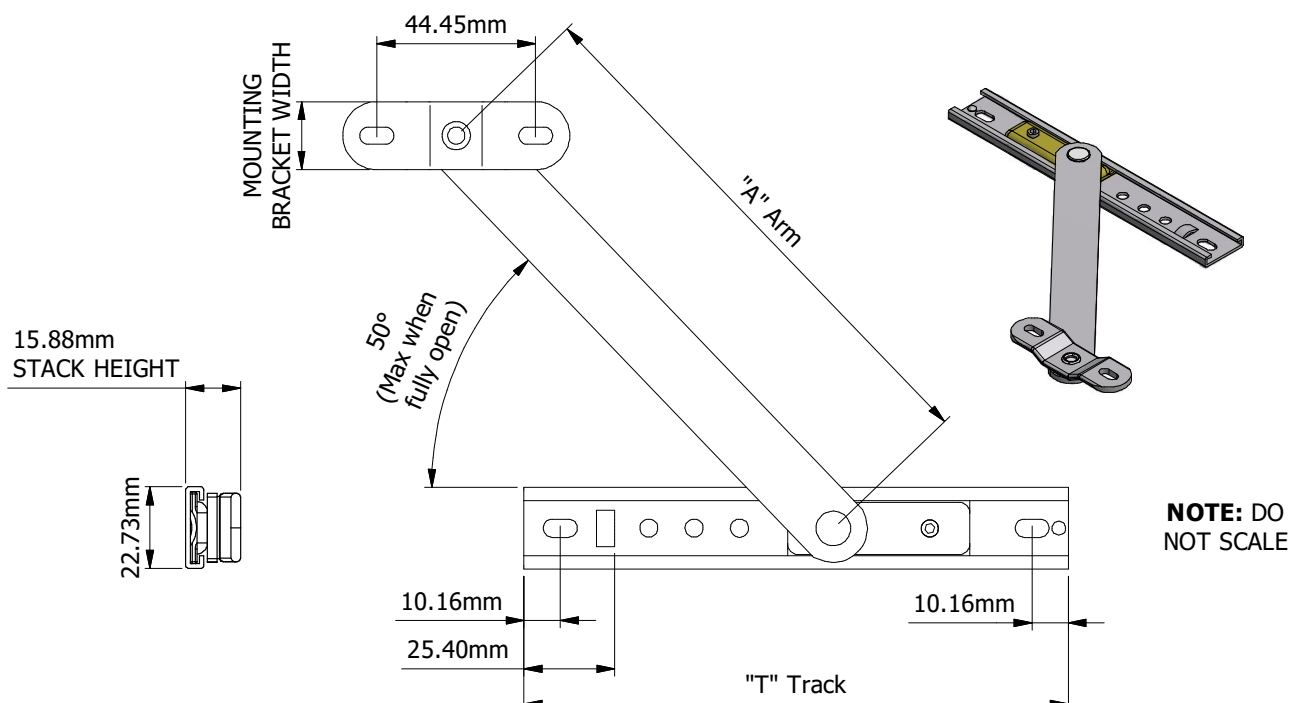
All of the information shown on this data sheet was correct at the time of issue.
All information however is subject to change and therefore it is advisable to check
with Caldwell Hardware to ensure that you have the latest issue level.

CALDWELL

SOLUTIONS THAT SET NEW STANDARDS

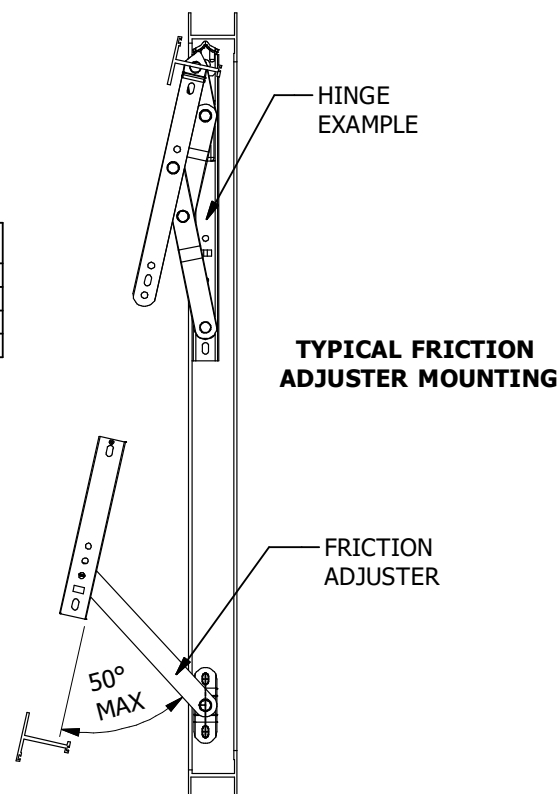
Telephone 024 7643 7900

LIMIT DEVICES - FRICTION ADJUSTERS (NON-RELEASABLE)



PART No.	"A" ARM LENGTH	"T" TRACK LENGTH	MOUNTING BRACKET WIDTH
AMC177	152.4mm (6")	152.4mm (6")	19.05mm
AMC178	203.2mm (8")	254mm (10")	19.05mm
AMC1672-10-12	254mm (10")	308mm (APPROX. 12")	15.00mm
AMC532	152.4mm (6")	203.2mm (8")	19.05mm

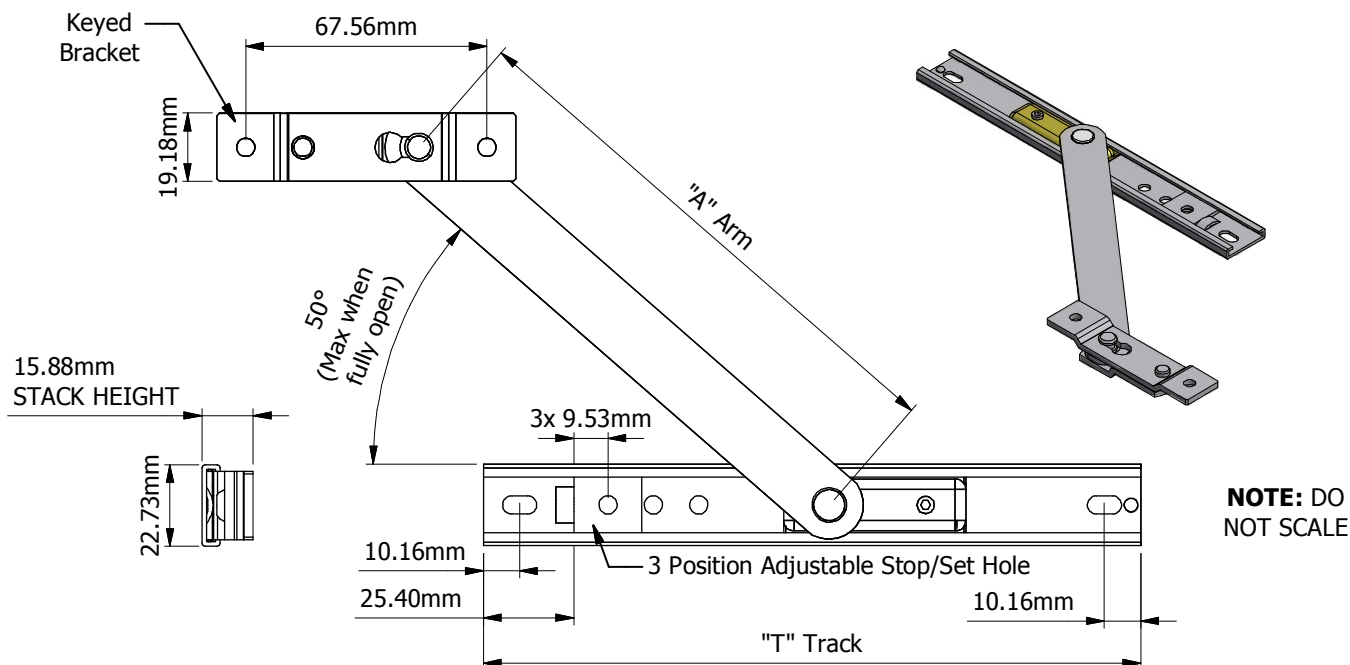
Materials: Stainless steel with brass shoe. Mount with (4) No.10/M5 pan head stainless steel screws (not supplied)



All of the information shown on this data sheet was correct at the time of issue. All information however is subject to change and therefore it is advisable to check with Caldwell Hardware to ensure that you have the latest issue level.

Telephone 024 7643 7900

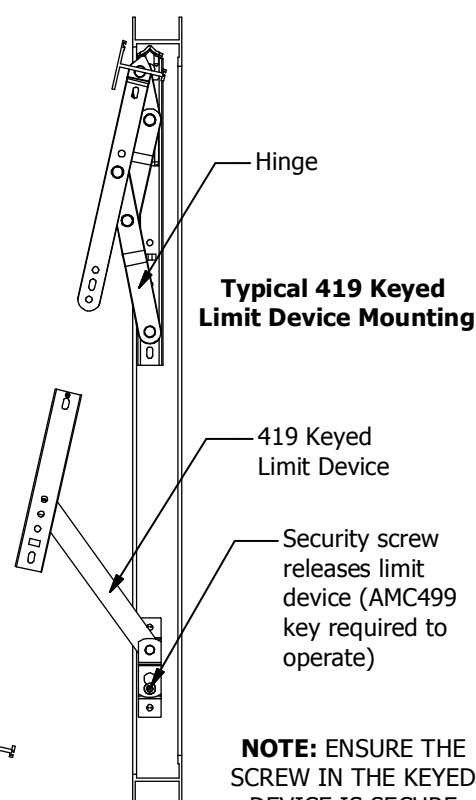
AMC419 SERIES - LIMIT DEVICES (KEY RELEASABLE)



PART No.	"A" ARM LENGTH	"T" TRACK LENGTH
AMC419-5-6	127mm (5")	152.4mm (6")
AMC419-6-6	152.4mm (6")	152.4mm (6")
AMC419-6-7.25	152.4mm (6")	184.15mm (7.25")
AMC419-6-8	152.4mm (6")	203.3mm (8")
AMC419-6-10	152.4mm (6")	254mm (10")
AMC419-7-6	177.8mm (7")	152.4mm (6")
AMC419-7-7.25	177.8mm (7")	184.15mm (7.25")
AMC419-7-8	177.8mm (7")	203.2mm (8")
AMC419-8-6	203.3mm (8")	152.4mm (6")
AMC419-8-7.25	203.3mm (8")	184.15mm (7.25")
AMC419-8-8	203.3mm (8")	203.3mm (8")
AMC419-8-10	203.3mm (8")	254mm (10")
AMC419-9-6	228.6mm (9")	152.4mm (6")
AMC419-9-7.25	228.6mm (9")	184.15mm (7.25")
AMC419-10-7.25	254mm (10")	184.15mm (7.25")
AMC419-10-8	254mm (10")	203.3mm (8")
AMC419-10-10	254mm (10")	254mm (10")
AMC419-10-12	254mm (10")	304.8mm (12")
AMC419-11-7.25	279.4mm (11")	184.15mm (7.25")
AMC419-11-8	279.4mm (11")	203.3mm (8")
AMC419-12-10	304.8mm (12")	254mm (10")
AMC419-12-12	304.8mm (12")	304.8mm (12")
AMC419-12-16	304.8mm (12")	406.4mm (16")
AMC419-12-18	304.8mm (12")	457.2mm (18")
AMC1027-6-6 **	152.4mm (6")	152.4mm (6")
AMC1027-6.5-7.25**	158.8mm (6.5")	184.2mm (7.25")
AMC1027-8-8**	203.2mm (8")	203.2 (8")

** : AMC1027 is released on the sash rather than the frame (as it is on the AMC419 model).

Materials: Stainless steel with brass shoe. Mount with (4) No.10/M5 pan head stainless steel screws (not supplied).



NOTE: ENSURE THE SCREW IN THE KEYED DEVICE IS SECURE BEFORE OPERATION

All of the information shown on this data sheet was correct at the time of issue. All information however is subject to change and therefore it is advisable to check with Caldwell Hardware to ensure that you have the latest issue level.

CALDWELL

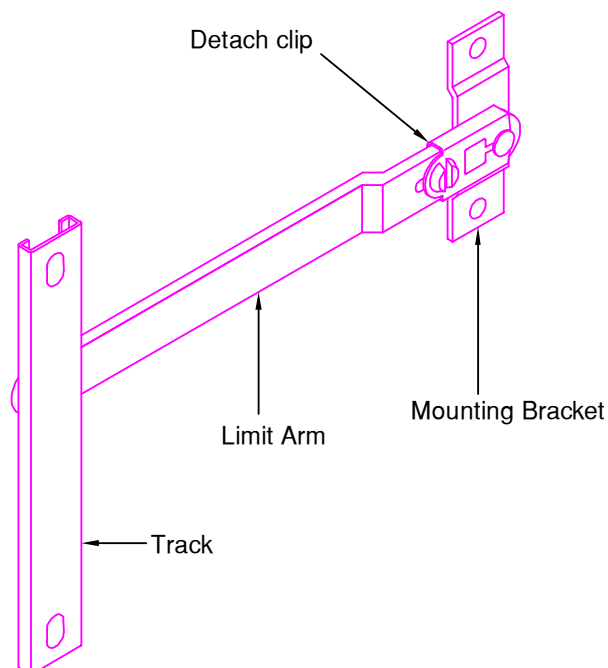
SOLUTIONS THAT SET NEW STANDARDS

Telephone 024 76437900

Truth Limit Device

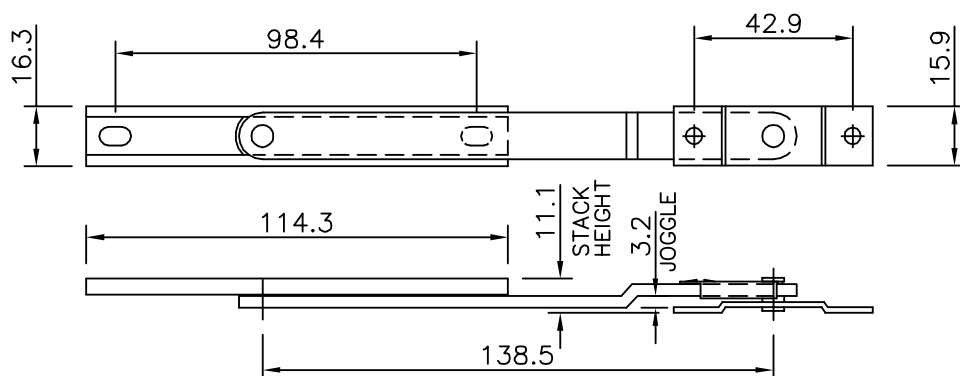
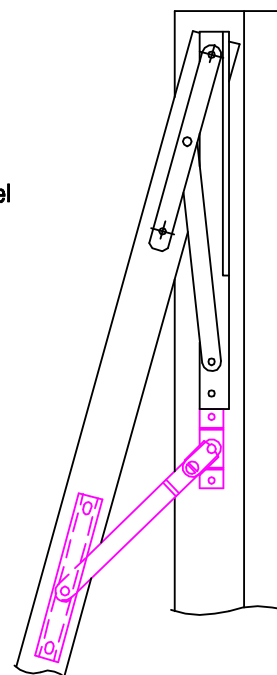
Order code	Finish
99.20.00.001	AS STATED

An in built captive release mechanism operated by means of a simple non-specific product tool. i.e. a coin.
A 300 series Stainless Steel option is also available



MATERIAL
 Mounting Bracket: Plated Steel
 Limit Arm: Plated Steel
 Track: Stainless steel
 Detach clip: Stainless steel

FINISH
 Plated Steel to E-Gard spec.



All of the information shown on this data sheet was correct at the time of issue.
 All information however is subject to change and therefore it is advisable to check
 with Caldwell Hardware to ensure that you have the latest issue level.

CALDWELL

SOLUTIONS THAT SET NEW STANDARDS

Telephone 024 76437900

Truth Key Release Limit Device

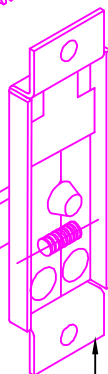
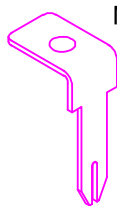
Limit Device with Key release feature

Order code	Track Length 'A'
37.26.00.200	127mm
37.27.00.200	152.5mm
37.28.00.200	178mm
37.29.00.200	203mm
37.30.00.200	229mm
37.31.00.201	254mm
37.32.00.200	279.5mm
37.33.00.202	305mm
37.34.00.201	356mm

This mechanism automatically stops the vent at a safety position required by the user. For cleaning & ease of window assembly a key may be used to release the window to it's maximum opening.

Note:

Key sold separately
Order Code Ref: 16002



Limit Arm

Mounting Bracket

Sliding brass / nylon shoe
with an adjustable screw
allows on site tensioning.
Available in a variety of track
& arm lengths.

Limit Device

MATERIAL
Manufactured from 300 series
Stainless steel
Friction Shoe:
Brass with nylon pad

Track

Dim 'A'

15.88
STACK
HEIGHT

All of the information shown on this data sheet was correct at the time of issue. All information however is subject to change and therefore it is advisable to check with Caldwell Hardware to ensure that you have the latest issue level.

CALDWELL

SOLUTIONS THAT SET NEW STANDARDS

Telephone 024 76437900

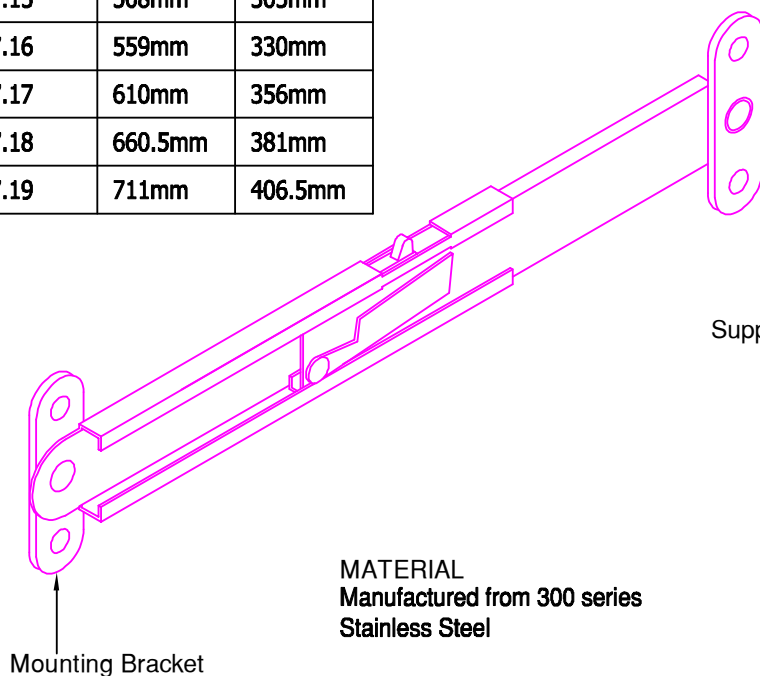
Truth Ratchet Support Arm

Standard Duty

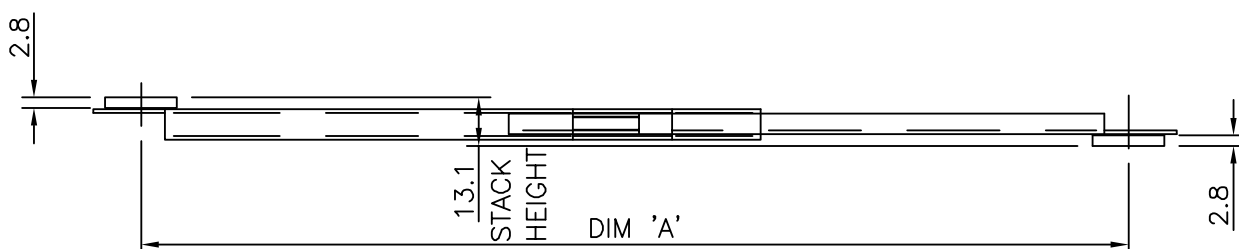
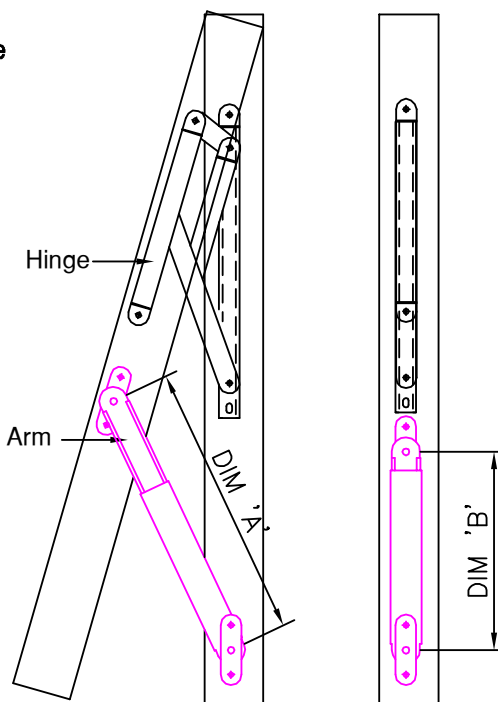
Order code	Extended position 'A'	Closed position 'B'
37.10	254mm	178mm
37.11	305mm	203mm
37.12	356mm	229mm
37.13	406.5mm	254mm
37.14	457mm	280mm
37.15	508mm	305mm
37.16	559mm	330mm
37.17	610mm	356mm
37.18	660.5mm	381mm
37.19	711mm	406.5mm

Designed for use on top hung windows
Securely locked in open position
for maintenance & to prevent sudden
closing during wind gusts.
Support arms can be unlocked
by a simple, small outwards movement of the sash.
Re-engages back into the first-position
opening when closed.

Limited opening model with key release
option available.



MATERIAL
Manufactured from 300 series
Stainless Steel



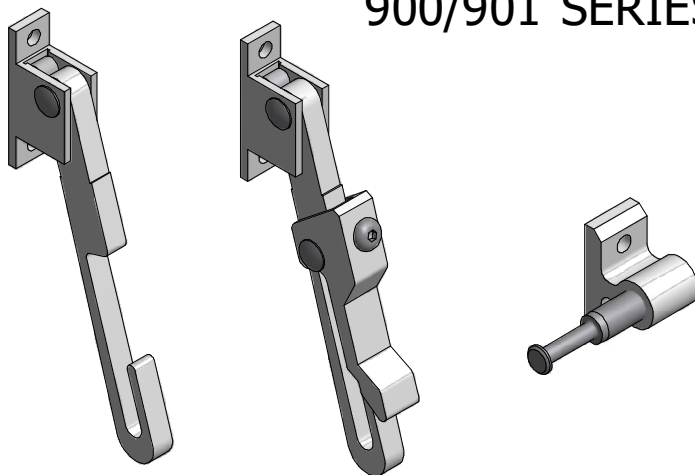
All of the information shown on this data sheet was correct at the time of issue.
All information however is subject to change and therefore it is advisable to check
with Caldwell Hardware to ensure that you have the latest issue level.

CALDWELL

SOLUTIONS THAT SET NEW STANDARDS

Telephone 024 7643 7900

900/901 SERIES RESTRICTOR



900 SERIES RESTRICTOR

Spring action aluminum extruded arm with positive re-engagement. Used in conjunction with steel pin housed in aluminium bracket and tested to meet 600N loads in accordance with BS6375 part 2.

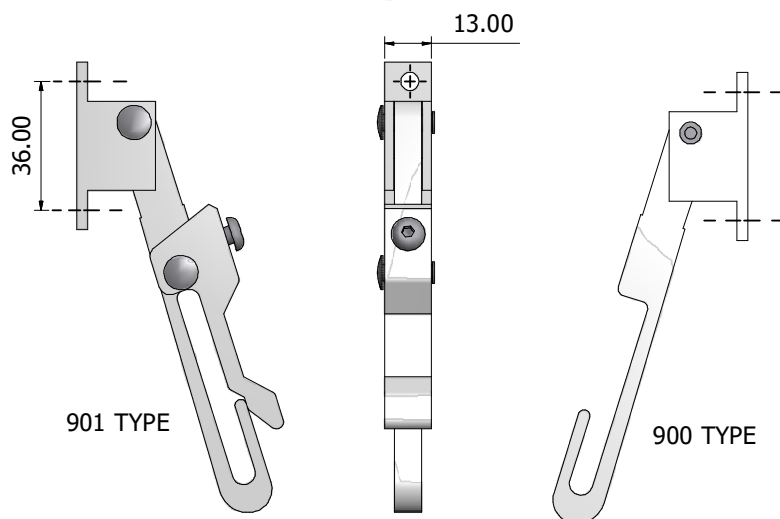
900 RESTRICTOR ARM (Without Locking arm)
Non-Lockable. Spring operated, self engaging.

901 RESTRICTOR ARM (With Locking arm)
Lockable, with Allen key. Spring operated, self engaging.

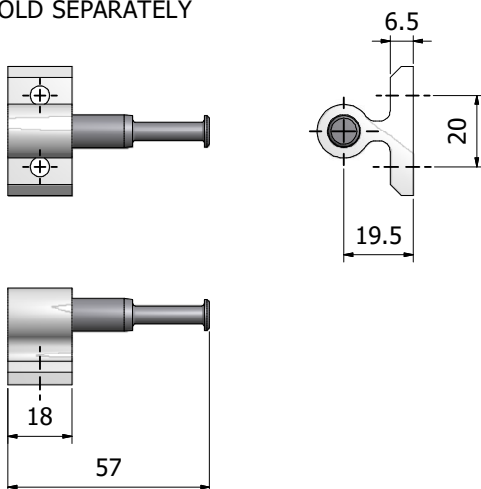
901S RESTRICTOR ARM (With Security Screw)
Lockable with Security Allen Key. Uses special security screw with mating security Allen Key. Please note that the Allen key N70001 is supplied separately.

MATERIAL

Bracket:- Extruded aluminum to BS1474
Arm housing:- Extruded aluminum to BS1474
Locking Arm:- Extruded aluminum to BS1474
Locking screw and rivets: Stainless steel
Spring:- Spring steel



902 RESTRICTOR PIN - SOLD SEPARATELY



MATERIAL

Bracket:- Extruded aluminum to BS1474
Pin: Zinc plated Mild Steel

PART No.	FINISH
900ANSAT	SATIN ANODISED
900HIPCAWHITE	WHITE POWDER COAT
901ANSAT	SATIN ANODISED
901HIPCAWHITE	WHITE POWDER COAT
902ANSAT	SATIN ANODISED
902HIPCAWHITE	WHITE POWDER COAT

Other finishes are available on request

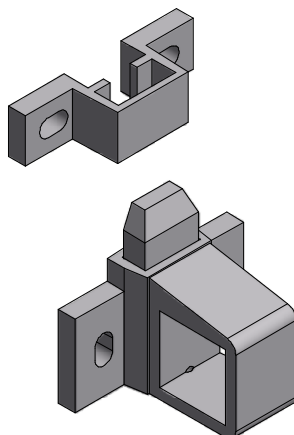
All of the information shown on this data sheet was correct at the time of issue. All information however is subject to change and therefore it is advisable to check with Caldwell Hardware to ensure that you have the latest issue level.

CALDWELL

SOLUTIONS THAT SET NEW STANDARDS

Telephone 024 7643 7900

230 STORM CATCH



230 STORM CATCH

A friction slide catch designed where automatic re-engagement is not required.

Note: The 230 Catch can be used in tandem if required (tandem bar sold separately).

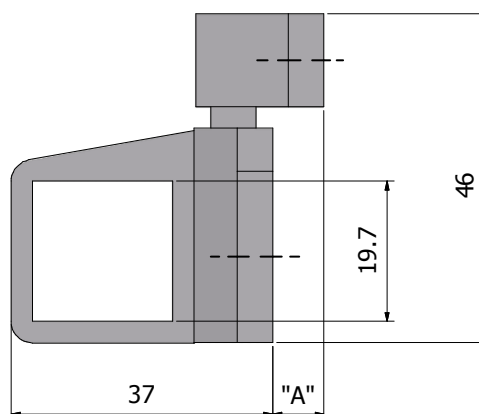
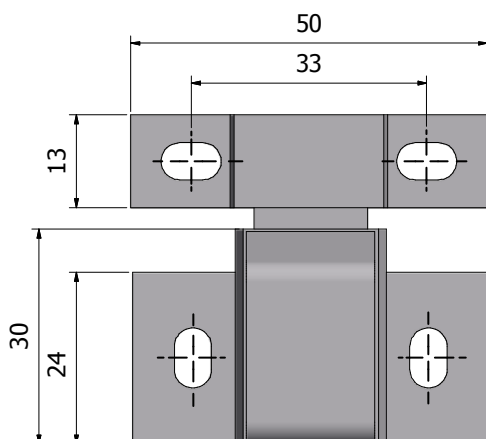
MATERIAL

Catch:- Extruded aluminum to BS1474

Tongue:- Extruded aluminum to BS1474

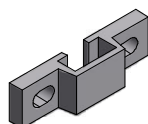
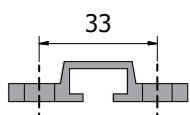
Keep:- Extruded aluminum to BS1474

Spring:- Spring steel

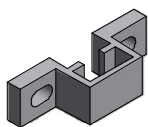
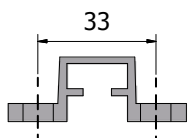


STANDARD KEEPS

Supplied with Catch



Pack No. 23000
To suit flush
(Dim A=0mm)



Pack No. 23007
To suit flush
(Dim A=7mm)

Other finishes are available on request

PART No.	FINISH	DESCRIPTION
23000ANSAT	SATIN ANODISED	0mm Step
23000HIPCAWHITE	WHITE POWDER COAT	0mm Step
23007ANSAT	SATIN ANODISED	7mm Step
23007HIPCAWHITE	WHITE POWDER COAT	7mm Step
24012		2mm Packer
24022		3mm Packer
23124		5mm Packer

PACKERS:

Packers are available for additional spacing of the catch keeps

2mm Aluminium Part No. 24012

3mm Aluminium Part No. 24022

5mm Black Nylon Part No. 23124

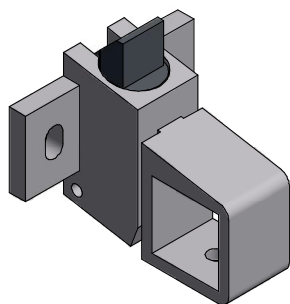
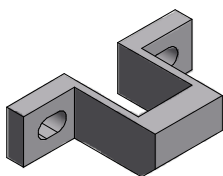
All of the information shown on this data sheet was correct at the time of issue. All information however is subject to change and therefore it is advisable to check with Caldwell Hardware to ensure that you have the latest issue level.

CALDWELL

SOLUTIONS THAT SET NEW STANDARDS

Telephone 024 7643 7900

211 SPRING CATCH



211 SPRING CATCH

An innovative lever movement allows operation from almost any angle. It's wide arc offers successful pole operation. This Spring Catch gives peace of mind as the catch can be re-engaged, just by closing the window.

Note: The 211 Catch can be used in tandem (or triple) if required. Tandem bar sold separately.

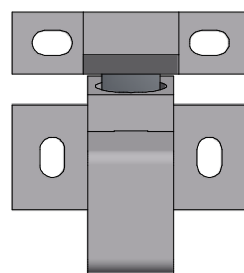
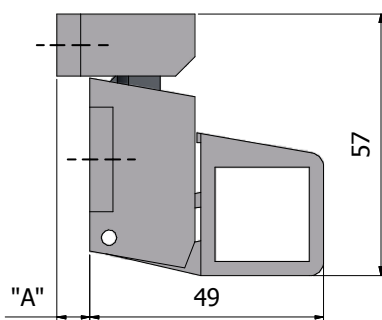
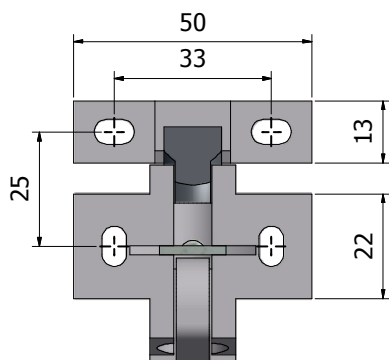
MATERIAL

Catch:- Extruded aluminum to BS1474

Tongue:- PVC

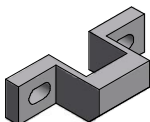
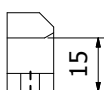
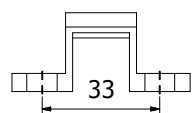
Keep:- Extruded aluminum to BS1474

Spring:- Spring steel

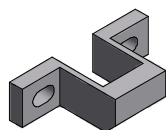
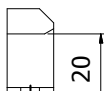
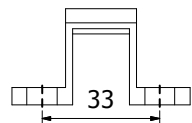


STANDARD KEEPS

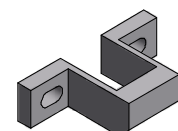
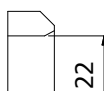
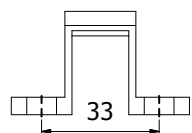
Supplied with Catch



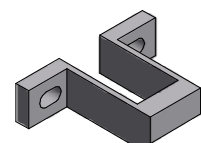
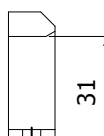
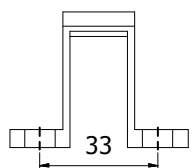
Pack No. 21100
To suit flush
(Dim A=0mm)



Pack No. 21105
To suit flush
(Dim A=5mm)



Pack No. 21107
To suit flush
(Dim A=7mm)



Pack No. 21116
To suit flush
(Dim A=16mm)

PACKERS:

Packers are available for additional spacing of the catch keepers

2mm Aluminium Part No. 24012
3mm Aluminium Part No. 24022
5mm Black Nylon Part No. 23124

Other finishes are available on request

PART No.	FINISH	DESCRIPTION
21100ANSAT	SATIN ANODISED	0mm Step
21100HIPCAWHITE	WHITE POWDER COAT	0mm Step
21105ANSAT	SATIN ANODISED	5mm Step
21105HIPCAWHITE	WHITE POWDER COAT	5mm Step
21107ANSAT	SATIN ANODISED	7mm Step
21107HIPCAWHITE	WHITE POWDER COAT	7mm Step
21116ANSAT	SATIN ANODISED	16mm Step
21116HIPCAWHITE	WHITE POWDER COAT	16mm Step
24012		2mm Packer
24022		3mm Packer
23124		5mm Packer

All of the information shown on this data sheet was correct at the time of issue. All information however is subject to change and therefore it is advisable to check with Caldwell Hardware to ensure that you have the latest issue level.



AVAILABILITY

Standard stock items are based on a 5 day lead time. Products that are not in stock may be subject to longer lead times. Contact Caldwell for confirmation.

APPLICABLE STANDARDS & TESTING

Please contact Caldwell for test data on applicable products.

WARRANTY DETAILS

For full details of the warranty, please contact our Customer Service Team.

MAINTENANCE

Caldwell Casement Hardware is free from routine maintenance (unless otherwise stated) and when installed in accordance with our guidelines should continue to perform for many years without problems. Fixings to be tightened as required.

AUTHORITIES

All Caldwell products are manufactured according to BS EN ISO 9001:2008 certified Quality Management Systems.

Where product standards do not exist Caldwell have set in house procedures.

Further information on specific testing is often available from our technical department.

Caldwell are also members of The Council for Aluminium in Building (CAB) which brings together three existing trade associations, the Architectural Aluminium Association, The Patent Glazing Contractors Association and the Aluminium Window Association, into a unified voice.

